



Tottenham Mews, W1T

£700,000

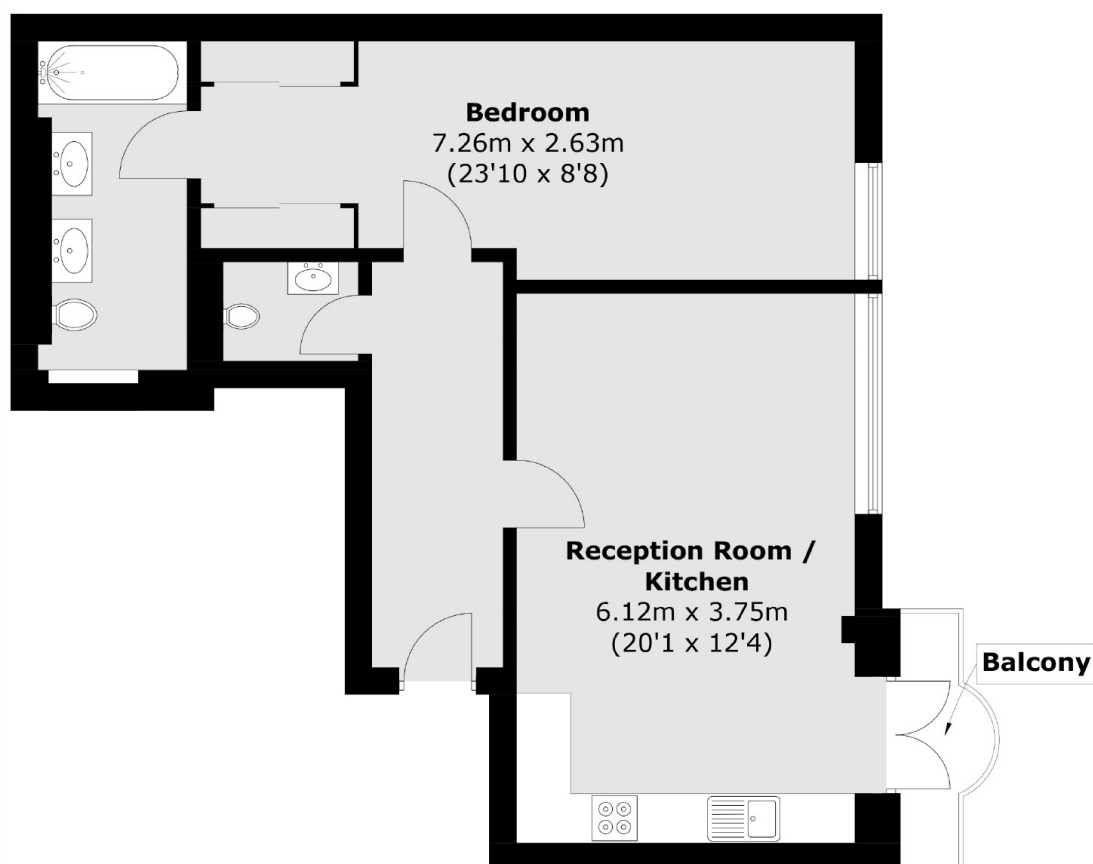
An attractive warehouse conversion set within a charming mews in the heart of the Charlotte Street Conservation Area. This stylish one-bedroom apartment offers contemporary living and benefits from a private balcony.

Located moments from Goodge Street station, residents will enjoy easy access across London as well as the vibrant bars, cafés, and restaurants of Fitzrovia right on the doorstep.

Features

- Mews Location
- Video Entry Phone
- Passenger Lift
- Westerly Facing Balcony
- Bedroom with En Suite
- Long Lease

Tottenham Mews, London, W1T



Total area (approx.): 58.4 sq. m (628.6 sq. ft)
Balcony : 2.2 sq. m (23.7 sq. ft)