

27 Whitehall Lane, Blackrod

Bolton

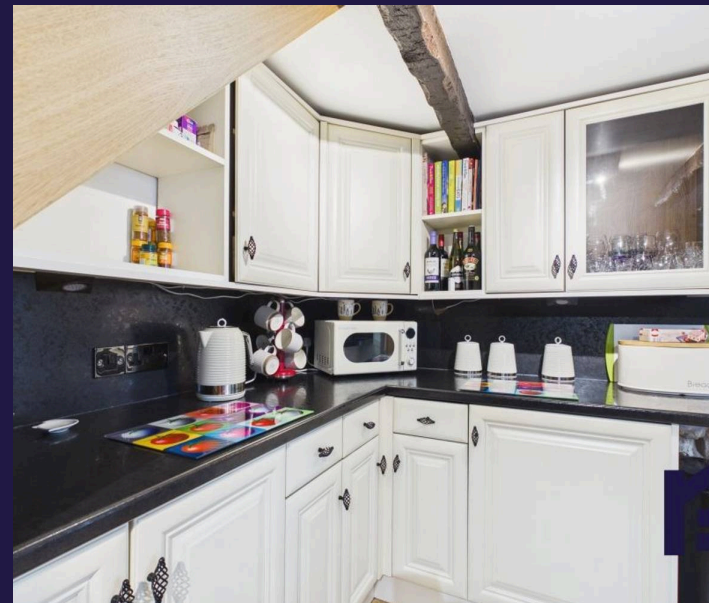

£975 PCM



27 Whitehall Lane

Blackrod, Bolton

This beautifully presented two-bedroom mid-terrace cottage is available to rent and offers a wonderful combination of charm, comfort, and practical living space. Ideally suited to professional couples, small families, or downsizers, the property is situated in a convenient location close to local amenities, schools, and excellent transport links. Upon entering the property, you are welcomed into a cosy and inviting lounge, providing the perfect space to relax and unwind. The fitted kitchen offers ample cupboard and worktop space, making it both functional and ideal for everyday living. To the rear of the property is a bright and airy conservatory, creating an additional reception area that can be used as a dining room, home office, or relaxing sitting area overlooking the garden.



Upstairs, the accommodation comprises one generously sized double bedroom and a comfortable single bedroom, both benefiting from fitted wardrobes providing excellent storage space. The modern shower room is finished to a good standard and complements the home perfectly.

Further benefits include double glazing and gas central heating throughout, ensuring comfort all year round. Externally, the property boasts a lovely rear garden, offering a private outdoor space ideal for relaxing, entertaining guests, or enjoying the warmer months.

27 Whitehall Lane

Blackrod, Bolton


This charming cottage provides a warm and welcoming feel throughout and represents an excellent opportunity for tenants seeking a well-maintained home in a desirable and convenient location.

Council Tax band: B

EPC Energy Efficiency Rating: TBC

Early viewing is highly recommended.

The property is available now and requires a deposit of £1,145, including a holding deposit of £229.

 *Contact us today to arrange your viewing and make this wonderful home yours.*



HOME  TRUTHS

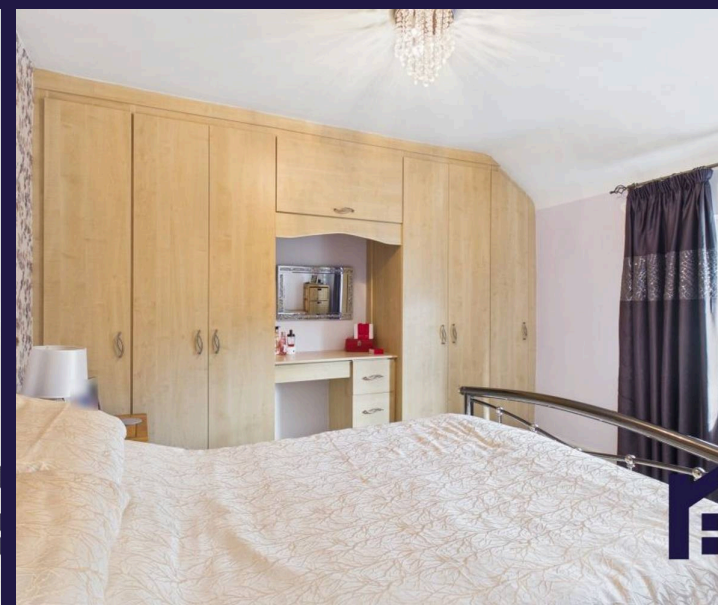
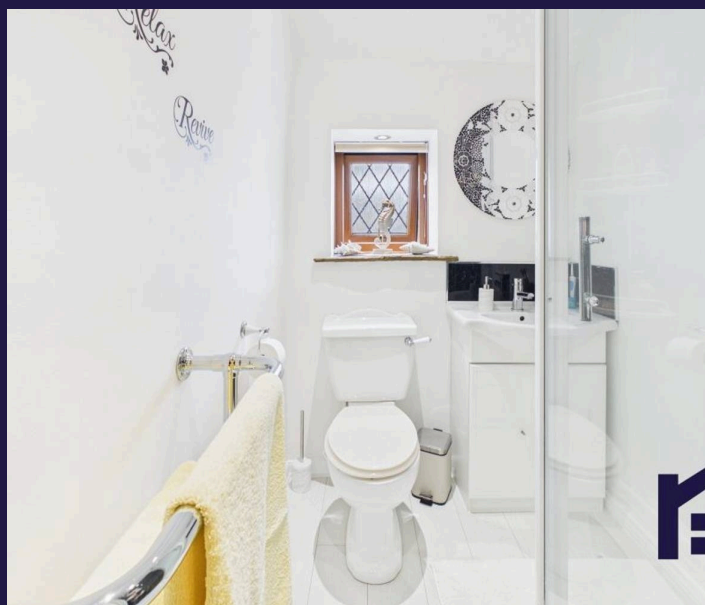
Eccleston Branch

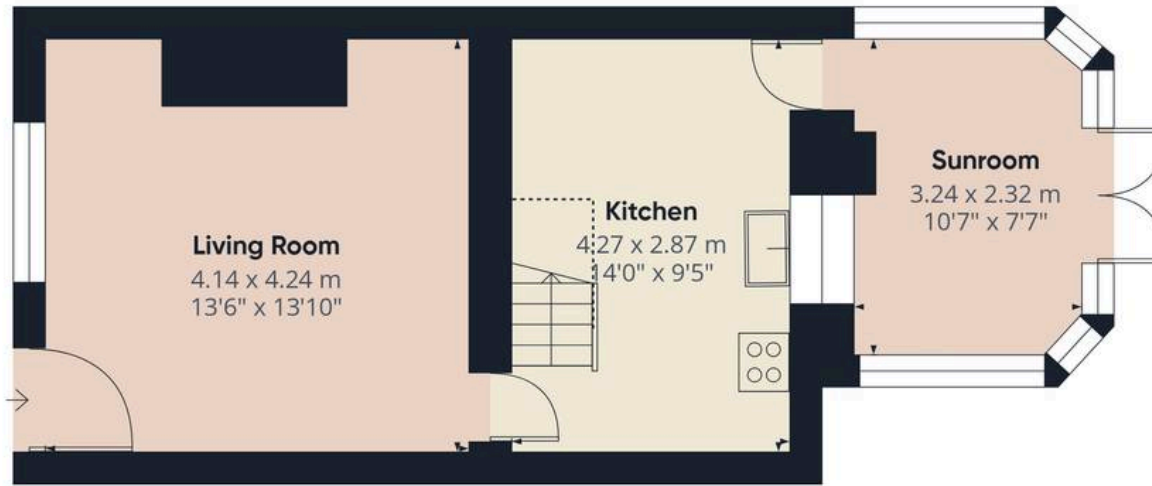
265 The Green, Eccleston, PR7 5TF
01257 451673

Coppull Branch

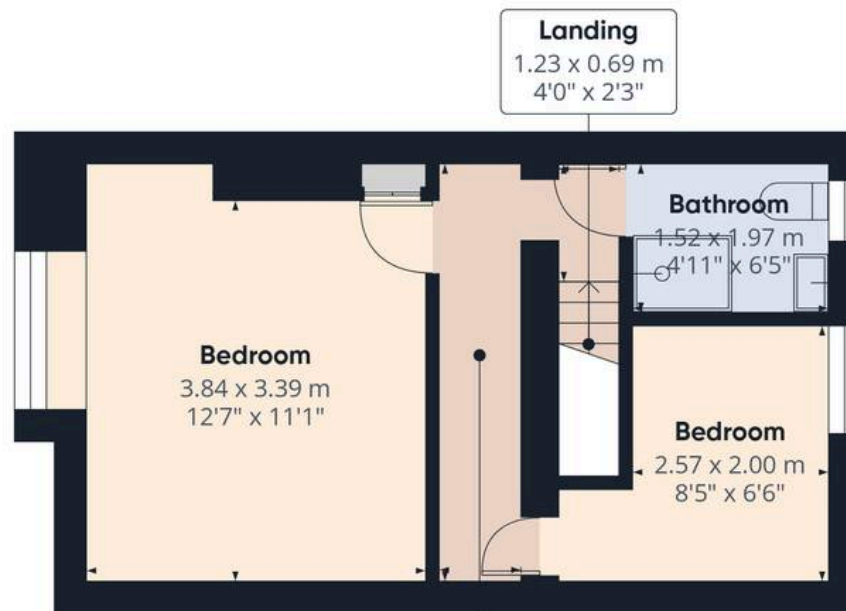
244 Spendmore Lane, Coppull, PR7 5DE
01257 794588

www.hometruthslancs.co.uk
office@hometruthslancs.co.uk





Floor 1



Floor 2



Approximate total area⁽¹⁾

64.6 m²
695 ft²

Reduced headroom

1 m²
10 ft²

(1) Excluding balconies and terraces

Reduced headroom

..... Below 1.5 m/5 ft

Calculations reference the RICS IPMS 3C standard. Measurements are approximate and not to scale. This floor plan is intended for illustration only.