

40 Spruce Avenue, Rhyl, LL18 3US

£160,000

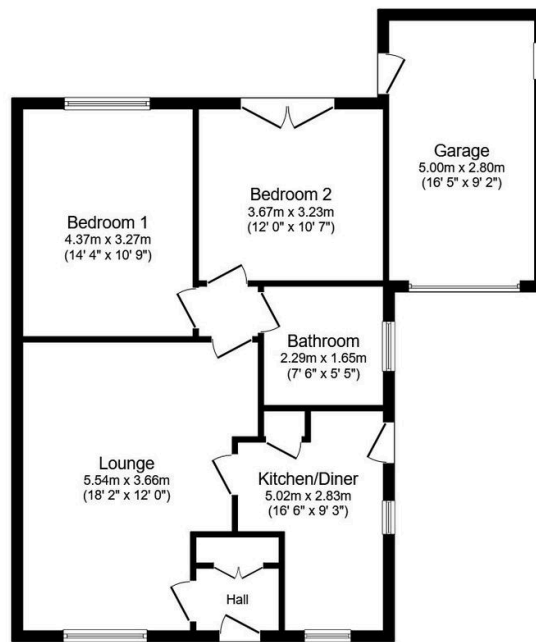
🛏️ 2 🚿 1 🚗 1



For sale is this two-bedroom semi-detached bungalow situated in a prime location for public transport links, schools and everyday amenities. Rhyl town centre provides a range of supermarkets, high street shops and services, along with the seafront and promenade for leisure and recreation, making the bungalow suitable for families as well as first time buyers and investors. The accommodation comprises a reception room featuring a fireplace, kitchen with dining space offers a practical layout for day-to-day meals. There are two double bedrooms and a bathroom fitted with a free-standing bath. Externally, the property benefits from a garden, parking and a single garage, adding useful storage and off-road parking options.

Key Features

- Semi-detached bungalow
- Two double bedrooms
- Kitchen with dining space
- Bathroom with free-standing bath
- Established private garden
- Driveway parking and single garage
- Close to schools and amenities
- Freehold
- EPC - D / Council tax -
- Date instructed 06/01/2026



Floor Plan

Floor area 83.6 sq.m. (900 sq.ft.)

Total floor area: 83.6 sq.m. (900 sq.ft.)

This floor plan is for illustrative purposes only. It is not drawn to scale. Any measurements, floor areas (including any total floor area), openings and orientations are approximate. No details are guaranteed, they cannot be relied upon for any purpose and do not form any part of any agreement. No liability is taken for any error, omission or misstatement. A party must rely upon its own inspection(s). Powered by www.Propertybox.io