

MORGAN H LEWIS



Asking Price £165,000

Medway Close, Ashton-in-Makerfield, Wigan WN4 0DJ

- *No Onward Chain
- *Semi Detached Dormer Bungalow
- *Three Double Bedrooms
- *Driveway Parking
- *Low Maintenance Rear Garden
- *Walking Distance to Excellent Rail Links

MORGAN H LEWIS



MORGAN H LEWIS

Now available for sale, with no onward chain – this delightful three bedroom dormer bungalow. Situated in a quiet cul-de-sac, within close proximity of Bryn Railway station as well as easy access to the M6, M62 and M58 Motorways for the commuter.

The property is briefly comprised of, a spacious entrance hallway with stairs leading to the first floor, a large family living room to the front of the property and a spacious kitchen to the rear of the home, with an array of fitted units as well as an under stairs storage space. The bathroom completes the ground floor, with w.c., shower over bath and basin.

To the first floor are three excellent bedrooms, with the master bedroom spanning the entire width of the property and two double bedrooms to the rear, with one of them benefitting from built in storage.

Externally the property is garden fronted with off road driveway parking and to the rear a spacious flagged garden provides a low maintenance space to enjoy the outdoors.

MORGAN H LEWIS

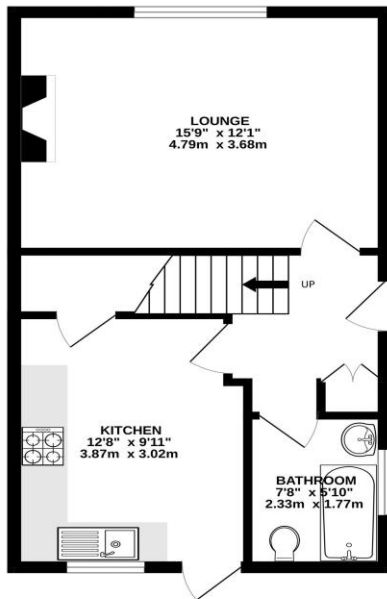


MORGAN H LEWIS

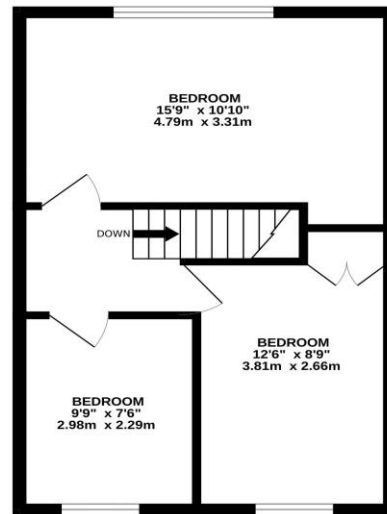


MORGAN H LEWIS

GROUND FLOOR
433 sq.ft. (40.2 sq.m.) approx.



1ST FLOOR
394 sq.ft. (36.6 sq.m.) approx.



TOTAL FLOOR AREA: 827 sq.ft. (76.8 sq.m.) approx.

Whilst every attempt has been made to ensure the accuracy of the floorplans contained here, measurements of doors, windows, rooms and any other items are approximate and no responsibility is taken for any error, omission or mis-statement. This plan is for illustrative purposes only and should be used as such by any prospective purchaser. The services, systems and appliances shown have not been tested and no guarantee as to their operability or efficiency can be given.

Made with Metropix C2526