



## THUNDERER WALK, SE18

£620,000

Flat  
Two bedrooms  
One reception room  
Two bathrooms  
Concierge service  
Energy rating: B

@marshandparsons  
marshandparsons.co.uk

MARSH &  
PARSONS



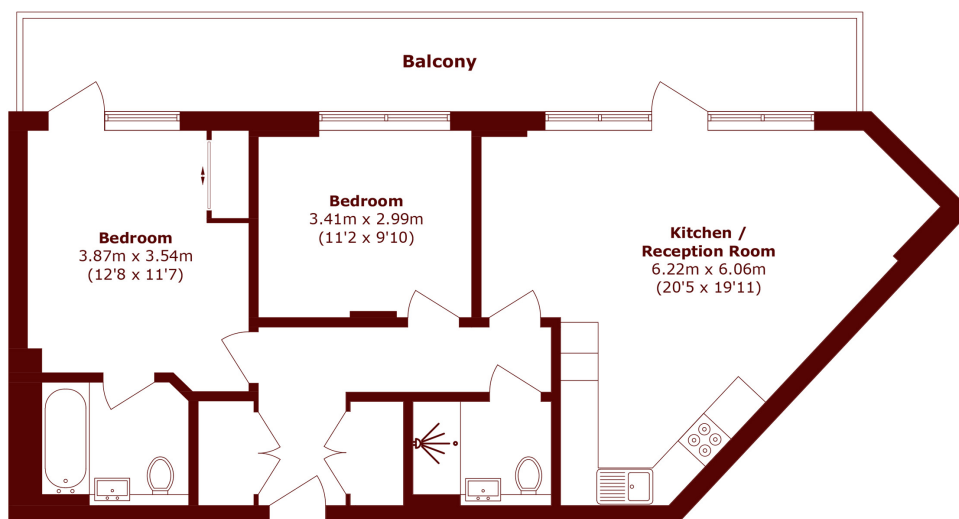
# ABOUT THE PROPERTY

Set on the top floor, this bright and spacious two bedroom apartment features a large reception room with floor-to-ceiling windows and an open plan modern kitchen. A private balcony adds outdoor space for relaxing or entertaining. It offers two double bedrooms, a stylish bathroom, and an en suite, plus allocated parking. Residents benefit from a concierge service and on-site facilities including a gym, swimming pool, and clubhouse.

Located in the heart of Woolwich, the apartment is a short walk from shops, cafés, restaurants, and local amenities. Excellent transport links include the Elizabeth line and DLR, providing fast connections across London.



# STEP INSIDE THUNDERER WALK



Total area (approx.): 76.6 sq. m (824.5 sq. ft)

Balcony area (approx.): 19.8 sq. m (213.1 sq. ft)

**Charlton**  
020 8293 0454

Energy Rating: B We aim to make our particulars both accurate and reliable. However, they are not guaranteed; nor do they form part of an offer or contract. If you require clarification on any points then please contact us, especially if you're traveling some distance to view. Please note that appliances and heating systems have not been tested and therefore no warranties can be given as to their good working order

**MARSH &  
PARSONS**