

Crammond Close

Hammersmith, London, W6

 LAWSONRUTTER





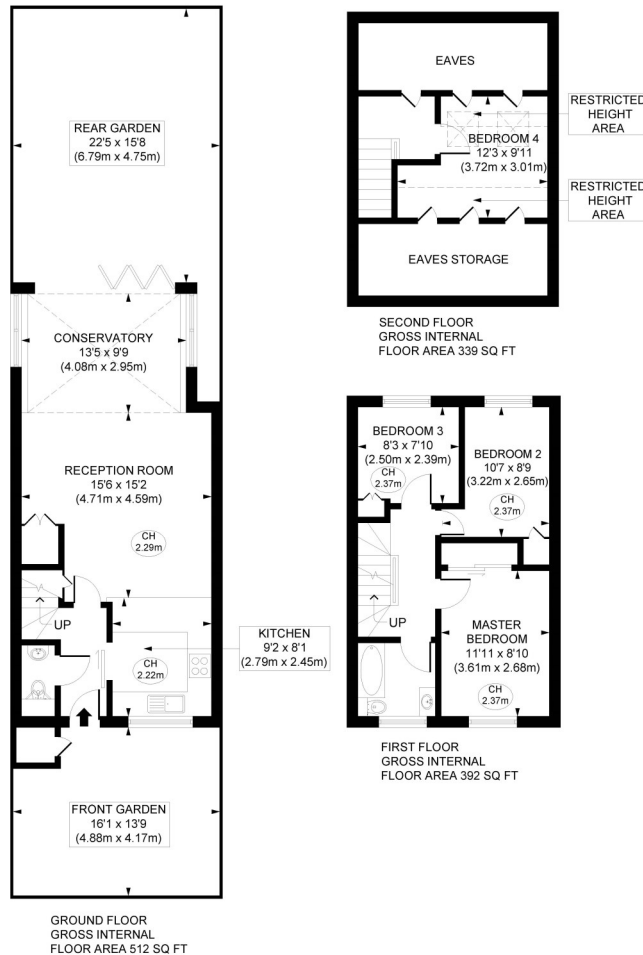
CRAMMOND CLOSE, W6

Crammond Close

Hammersmith, London, W6

Price Guide: £1,100,000

This stunning four bedroom house has been newly refurbished throughout to the highest of standards to create an exceptional home in a much sought after private development. This property comprises on the ground floor from an attractive entrance hall, cloakroom with WC, a beautiful fully fitted kitchen with stone worktop and breakfast bar, and a wonderful open plan living room with wood flooring which extends onto a superb rear extension with bi-fold doors leading to the secluded 22'5 south facing garden, which is an outstanding feature of the house. The first floor benefits from three bedrooms and a luxurious family bathroom, whilst the top floor comprises a further double bedroom. This is the ideal home for a family and offers great entertaining space both inside and out. Further benefits include off street parking. Crammond Close is within walking distance to Barons Court underground station and offers easy access to the amenities in Munster Village and Fulham Palace Road including Waitrose, Sainsburys, Café Nero, The Brook & Badger pub and Pret-a-Manger. Freehold.



Stunning four bedroom house which has been refurbished throughout in much sought after development

Wonderful open plan living room with wood flooring | Beautifully fitted kitchen with stone worktop

South facing garden | Stones throw to River Thames towpath | Easy access to Munster Village

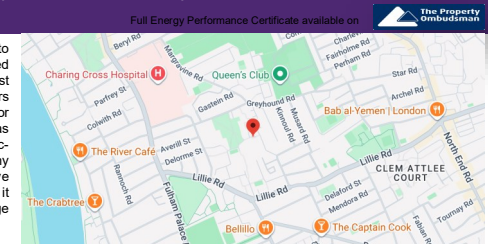
Close to transport & numerous amenities | 1243 Sq. Ft. (115.52 Sq. M.) Freehold

All viewings by appointment through our **Hammersmith Office**:

T: 020 7385 7000
E: hammersmith@lawsonrutter.com

192 Fulham Palace Road, London W6 9PA

In accordance with the Property Misdescription Act 1991, we wish to emphasise that the information given in these particulars is intended to help you decide whether you wish to view this property. Whilst every care is taken to ensure the accuracy of these particulars please note that all measurements are approximate and we are, for the accuracy of other information, reliant on what the seller has provided. We strongly recommend that you rely on your own inspections and those of your advisors to establish the details of any aspects which are of particular importance. Please note that we have not undertaken any survey of the property or the appliances within it and the buyer must rely on their own investigations prior to exchange of contracts.



APPROX. GROSS INTERNAL FLOOR AREA 1243 sq. ft / 115.52 sq. m (Including Restricted Height Area & Eaves Storage)

Illustration for identification purposes only. Not to scale. Floor Plan Drawn According To RICS Guidelines.

