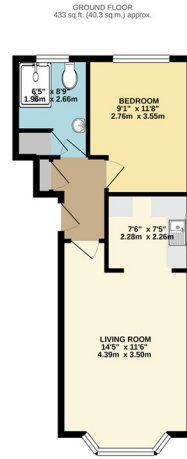




Chestnut Close | Fleet | Hampshire | GU51 2XE

£1,100 PCM

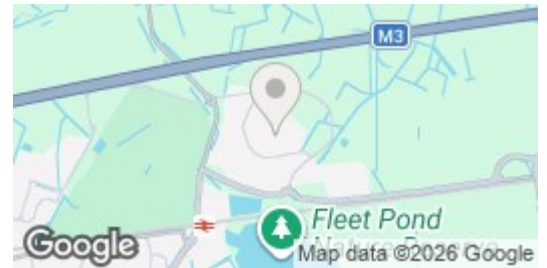
Waterfords 
Residential Sales & Lettings



TOTAL FLOOR AREA: 433 sq. ft. (40.3 sq. m.) approx.

Waterford Agents has been paid to prepare the contents of this document. The information in this document is for general information only and does not constitute an offer of any property. The information is provided for your information only and is not intended to be used as a basis for any decision. The information is provided for your information only and is not intended to be used as a basis for any decision. The information is provided for your information only and is not intended to be used as a basis for any decision.

Energy Efficiency Rating		Current	Potential
Very energy efficient - lower running costs			
(92 plus)	A		
(81-91)	B		
(69-80)	C		
(55-68)	D		
(39-54)	E		
(21-38)	F		
(1-20)	G		
Not energy efficient - higher running costs			
England & Wales		EU Directive 2002/91/EC	
		78	85



Description

Waterfords Estate Agents are proud to present this well positioned apartment within close proximity to both Fleet train station and the M3. The apartment is modern, spacious and is due to undergo a redecoration. Available on a unfurnished basis from 1st June 2026.

Key features

- One double bedroom first floor apartment
- Modern shower room
- Allocated parking space for one car
- Council Tax - Contact Agent
- Perfect for Commuters
- Repaint prior to new tenancy
- Recently refitted kitchen 2024
- Available June 1st 2026
- EPC - Contact Agent



39 The Hart Centre
Fleet
Hampshire
GU51 3LA
01252 623330
hampshirelettings@waterfords.co.uk
<https://www.waterfords.co.uk/>