

FREEHOLD



House - Semi-Detached (EPC Rating: E)

**1 YORK AVENUE, SIDCUP, DA15 7LJ**

Asking price

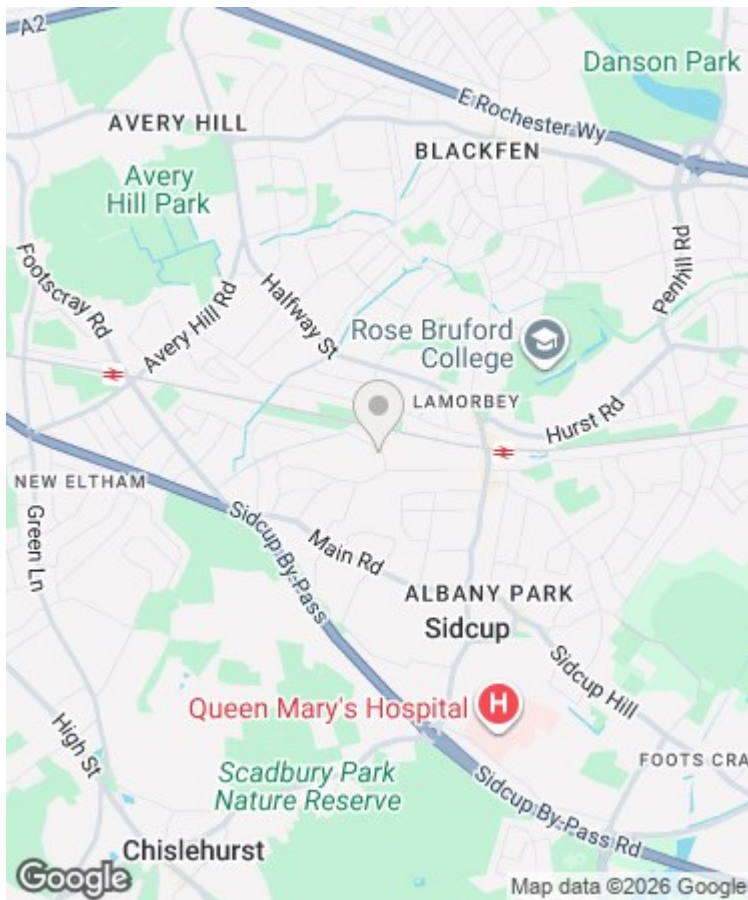
**£650,000**

**Westwood**  
PROPERTY SERVICES



# 4 Bedroom House - Semi-Detached located in Sidcup

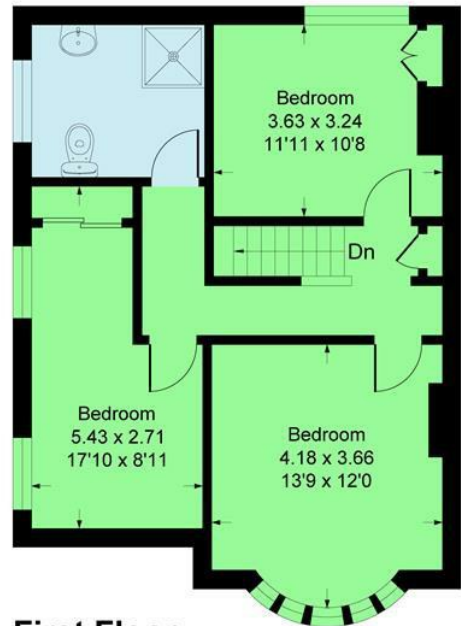
Westwood Sidcup are pleased to offer as a CHAIN FREE sale this extended four bedroom semi-detached chalet style home. Occupying a large corner plot on York and Gloucester Avenue the desirable location is close to Sidcup Train Station and a wealth of amenities. In brief the accommodation on offer comprises entrance hall, bay fronted living room, open plan kitchen/dining area overlooking the rear garden, ground floor fourth bedroom and a bathroom. The first floor includes three good size family bedrooms and a shower room. Although the home is in need of modernisation we believe it has amazing potential for someone to make a beautiful home on a superb road. Benefitting from gas central heating, double glazing and a detached garage we highly recommend an internal viewing.



SIDCUP | 2 CENTRAL PARADE SIDCUP, GREATER LONDON, DA15 7DH

# York Avenue, DA15

Approximate Gross Internal Area  
122.9 sq m / 1323 sq ft  
Garage Area 17.6 sq m / 190 sq ft  
Total Area 140.5 sq m / 1513 sq ft



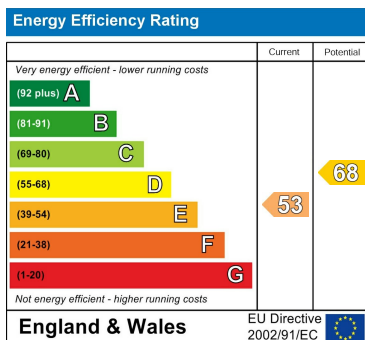
This plan is for layout guidance only. Not drawn to scale unless stated. Windows and door openings are approximate. Whilst every care is taken in the preparation of this plan, please check all dimensions, shapes and compass bearings before making any decisions reliant upon them.  
Produced By Planpix



Council Tax Band

F

Energy Performance Graph



Call us on

020 8301 5511

[sales@westwoodpropertyservices.co.uk](mailto:sales@westwoodpropertyservices.co.uk)

Agents Note: Whilst every care has been taken to prepare these particulars, they are for guidance purposes only. All measurements are approximate and are for general guidance purposes only and whilst every care has been taken to ensure their accuracy, they should not be relied upon and potential buyers are advised to recheck the measurements.