

Property ref: 116308

Eldon Lodge, Reading, RG1 4NH

£1,500 PCM

HASLAM'S
Lettings



A ground floor two bedroom apartment located within this impressive Grade II listed conversion within the Eldon Conservation Area; convenient for Royal Berkshire Hospital, town centre and railway station.

Reading Borough Council tax band C.

The property is currently on the market for sale.

Available 18/04/2026

- Two double size bedrooms with built-in wardrobes
- Bathroom with independent shower above bath
- Open plan living room/kitchen; EPC Rating C
- Modern kitchen including appliances; Gas central heating
- Secure gated grounds with allocated parking
- Furnished; Managed by HASLAM'S

*Fees For Assured Shorthold Tenancies: when you rent a property from us you will be required to pay a sum equivalent to one weeks' rent for a holding deposit. Upon successful application, this amount will be off set against your first months' rent. You will also be required to pay a security deposit equivalent to 5 weeks' rent which will be held and protected in line with Deposit legislation. For more information about our fees please visit: www.haslams.net
Fees for all other tenancies (Non Housing Act Tenancies / Company Lets): when you rent a property from us we will charge you a one-off fee per property. This charge is the equivalent of 15 days of the monthly rental charge (+VAT) with a minimum fee of £450 (inc.VAT) up to a maximum of £650 (inc.VAT). Other fees may apply depending on your circumstances.

0118 960 1055

lettings@haslams.net www.haslams.net

Haslams Estate Agents Ltd, 159 Friar Street, Reading, Berkshire, RG1 1HE

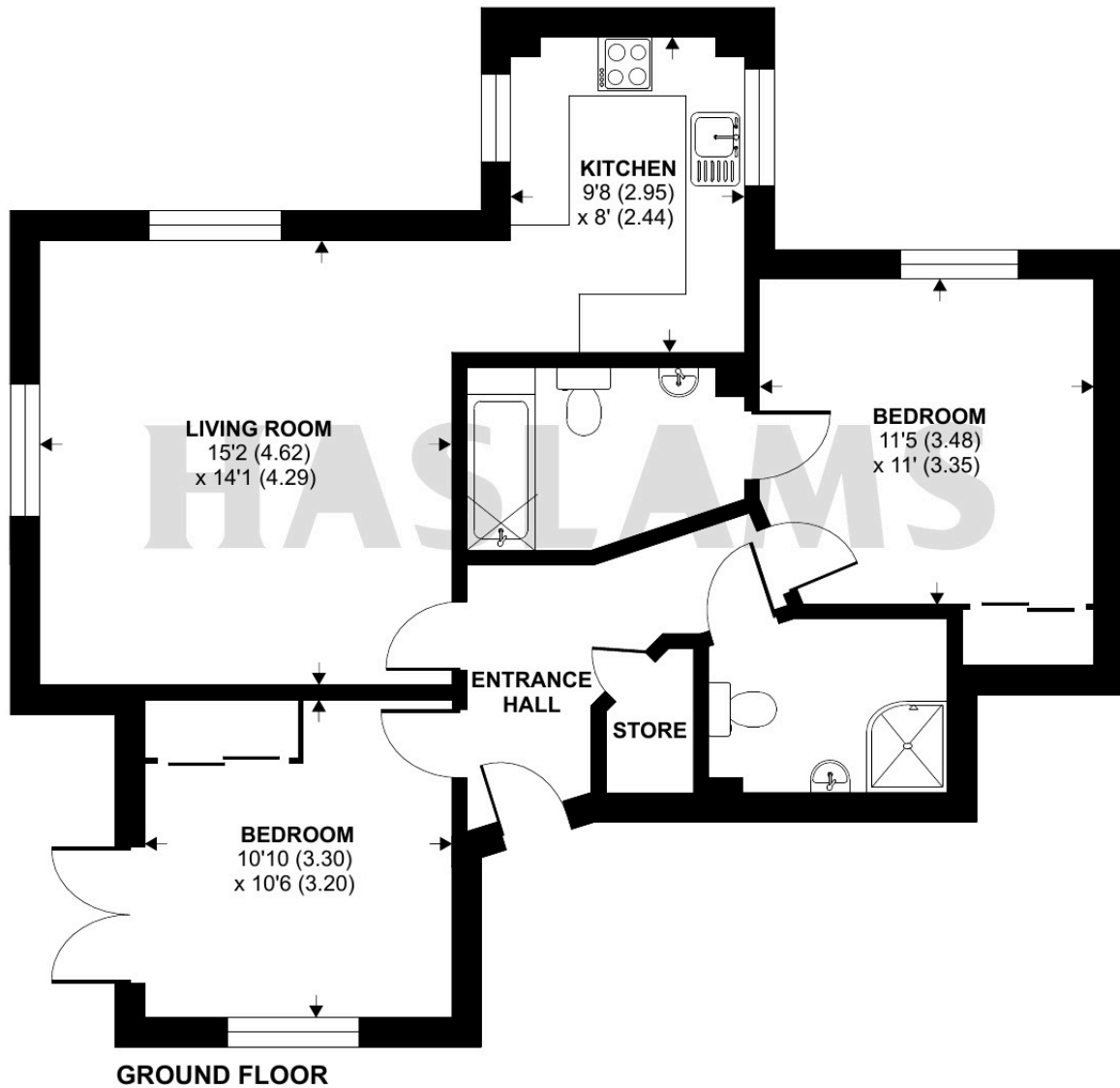
Water supply: Mains
Drainage info: Mains
Electricity supply: Mains
Gas supply: Mains
Broadband/Mobile Info: Connections available. For an indication of specific speeds and supply of Broadband and Mobile, we advise applicants go to the Ofcom website 'Broadband and Mobile Coverage Checker'.



Kings Road, Reading, RG1

Approximate Area = 760 sq ft / 70.6 sq m

For identification only - Not to scale



 Floor plan produced in accordance with RICS Property Measurement 2nd Edition, Incorporating International Property Measurement Standards (IPMS2 Residential). © nchecon 2025. Produced for Haslams. REF: 1236648