



## Tachbrook Street, SW1V

### £795,000

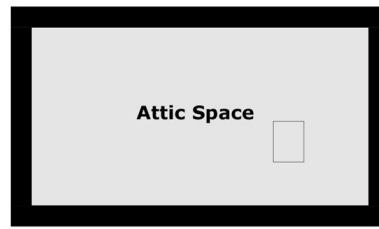
Positioned on the top floor of a charming period building on Tachbrook Street, this two-bedroom duplex apartment offers an excellent opportunity to create a wonderful home in central London.

Tachbrook Street benefits from excellent transport connections, with Pimlico Tube Station (Victoria Line) approximately 100 metres away. Victoria Station (National Rail, Gatwick Express, Victoria, Circle and District Lines) is also within 0.6 Miles. The area offers a wide selection of local shops, cafés, restaurants, and a daily market at the end of the street. The River Thames is also located just 0.3 Miles from the property. The open green spaces of St George's Square and Bessborough Gardens are nearby at approximately 0.2 Miles, while The Houses of Parliament, Sloane Square, Battersea Park and the Battersea Power Station development are approximately 1 mile away.

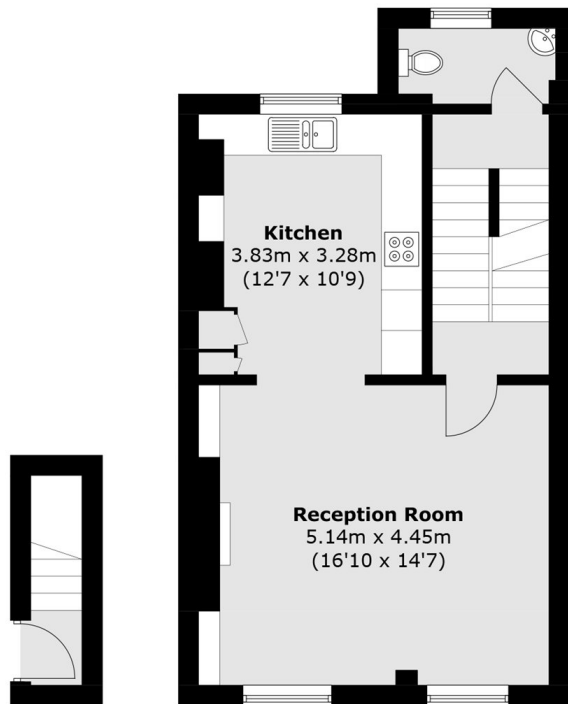
### Features

- Two Double Bedroom
- Excess Attic Storage
- Share Of Freehold
- Period Conversion
- Duplex Apartment
- No Onward Chain

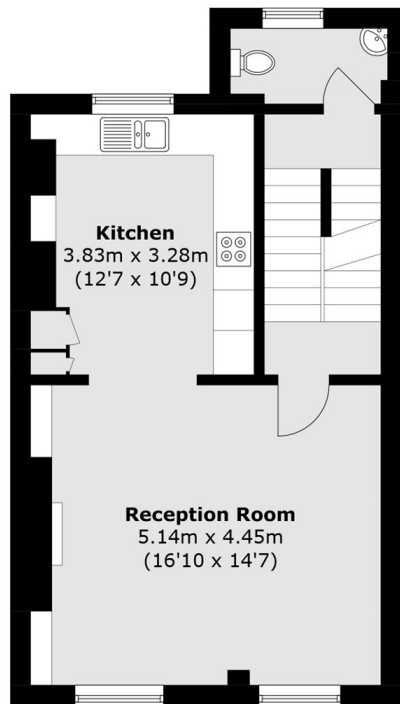
Tachbrook Street,  
London, SW1V



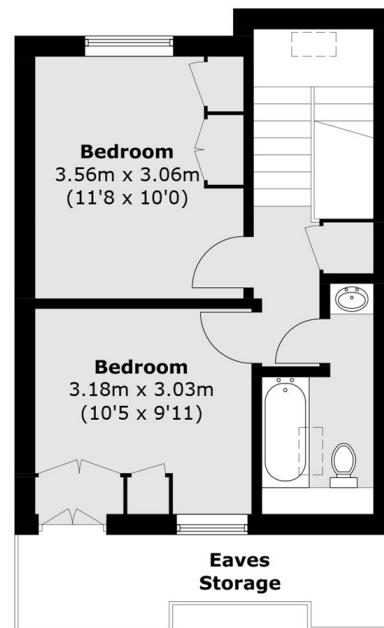
**Attic Space**



**First Floor**



**Second Floor**



**Third Floor**

Total area (approx.): 82.7 sq. m (890.1 sq. ft)  
(Excluding Eaves / Attic Space)

**Dexters**

Westminster  
50 Churton Street  
London  
SW1V 2LP  
Sales  
020 7590 9570

Energy Rating: D. We aim to make our particulars both accurate and reliable. However they are not guaranteed; nor do they form part of an offer or contract. If you require clarification on any points then please contact us, especially if you're traveling some distance to view. Please note that appliances and heating systems have not been tested and therefore no warranties can be given as to their good working order.

 **RICS** | Regulated  
Estate Agent  
and Letting Agent

[dexters.co.uk](https://www.dexters.co.uk)