

Buy. Sell. Rent. Let.

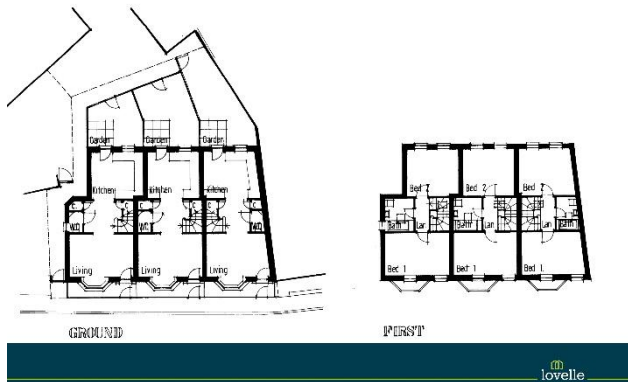


Barton-upon-Humber, North Lincolnshire



When it comes to  
property it must be

  
lovelle



## Asking Price £100,000

### Key Features

- **\*\*NO CHAIN\*\***
- Approved Planning Permission
- PA/2009/1486
- Plot Size - 241m<sup>2</sup> / 2594ft<sup>2</sup>
- Popular Town Area
- Building Plots
- Tenure: Freehold

### **\*\*NO CHAIN\*\***

An opportunity to purchase three building plots in Barton Upon Humber.

This piece of land comes with an approved planning permission (PA/2009/1486) to erect three dwellings with all matters reserved for subsequent consideration.

Do not hesitate and book your viewing today.

### LOCATION

Barton-upon-Humber is a highly regarded historic market town with Primary and Senior schools, quaint shops, supermarkets, stylish restaurants, cosy pubs, charming coffee shops and two petrol stations. It benefits from numerous recreational facilities and is surrounded by open countryside. The distinctive Churches, library, wildlife reserves and popular museums allow you to enjoy peace and tranquillity whilst the shopping and nightlife of neighbouring towns means you are never far away from a faster pace of life!

### BROADBAND TYPE

Standard- 18 Mbps (download speed), 1 Mbps (upload speed),  
 Superfast - 80 Mbps (download speed), 20 Mbps (upload speed),  
 Ultrafast - 1000 Mbps (download speed), 600 Mbps (upload speed).

### MOBILE COVERAGE

Outdoors - Great,  
 Indoors - Good,  
 Available - O2, Vodafone, Three, EE.