



RAVENSBURY TERRACE, SW18

£750,000

- Modern apartment
- Two double bedrooms
- Two bathrooms
- Large private terrace
- Allocated parking space
- Energy rating: B





ABOUT THE HOME

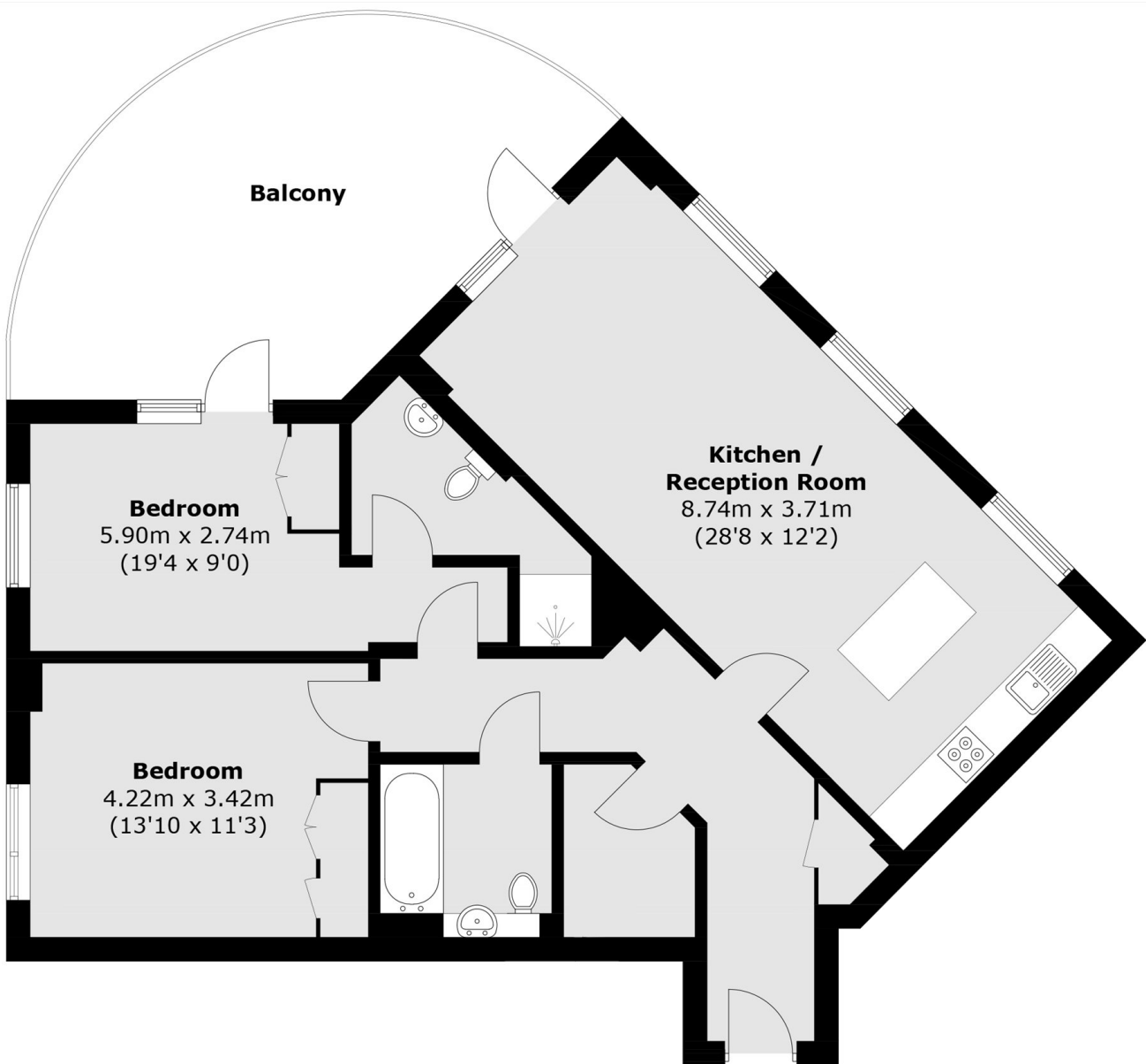
An exceptionally large two bedroom, two bathroom modern apartment with a large private terrace and scenic views over the River Wandle.

The property is being sold with allocated parking, benefits from a very large private terrace which can be accessed from two rooms, uninterrupted views over the River Wandle and access to a communal roof terrace on the top floor. Accommodation comprises a generous entrance hallway with two large, practical storage cupboards, a beautifully presented and bright open-plan kitchen leading into an expansive reception and dining area, and a high-specification family bathroom. The second bedroom is well-proportioned and includes built-in storage, while the spacious principal bedroom features fitted wardrobes and a stylish en suite bathroom with a walk-in shower.

Garrett Apartments on Ravensbury Terrace is a modern development located 0.3 miles from Earlsfield mainline station. This property is ideally situated for all of the trendy shops, bars, restaurants and other amenities on Garratt Lane as well as the green open spaces and facilities in both Wimbledon Park and King George's Park.







Total area (approx.): 89.7 sq. m (965.5 sq. ft)
Balcony (approx.): 25.1 sq. m (270.2 sq. ft)

JACKSONS EARLSFIELD

372-374 Garratt Lane,
Earlsfield, London, SW18 4ES
Sales: 020 8971 7979
Lettings: 020 8971 7070

Energy Rating: B We aim to make our particulars both accurate and reliable. However they are not guaranteed; nor do they form part of an offer or contract. If you require clarification on any points then please contact us, especially if you're traveling some distance to view. Please note that appliances and heating systems have not been tested and therefore no warranties can be given as to their good working order.