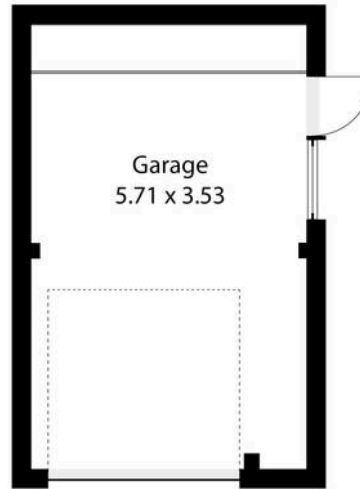




Downsview Dog Kennel Lane, Lyminge - CT18 8ER
£435,000

Approximate Gross Internal Area (Including Low Ceiling) = 117 sq m
Outbuildings / Garage = 20 sq m
Total = 137 sq m



Low Ceiling
< 1.5m

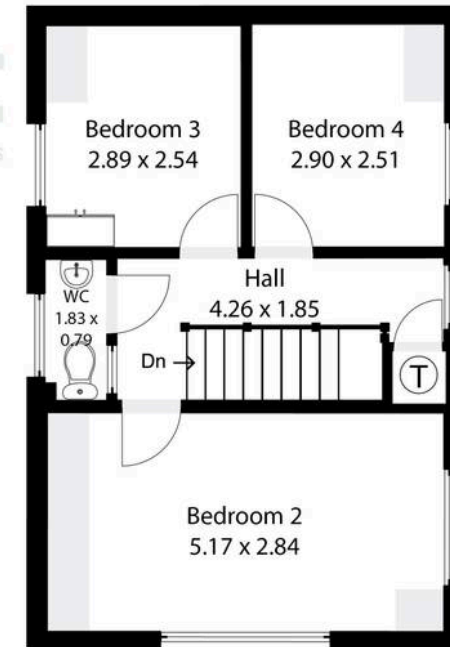


Illustration for Identification purposes only. Measurements are approximate. Dimensions given are between the widest points.
Not to scale. Outbuildings are not shown in actual location.
© Unauthorised reproduction prohibited - chris Kemp@hotmail.com



Downsview Dog Kennel Lane

Lyminge, Folkestone

A spacious three/four bedroom family home set in a tucked away position within a highly sought-after village, enjoying far-reaching countryside views. The property now requires some updating, offering an excellent opportunity for buyers to create and personalise their ideal home. The accommodation comprises an entrance porch leading to a hallway with a cloak cupboard, a versatile family room/bedroom one, a family bath/shower room/WC, a kitchen open-plan to the dining room, and a generous double-aspect living room featuring an attractive wood-burning stove and French doors opening to the garden. To the first floor there is a landing, three bedrooms, and a separate WC. Outside, the property is equally appealing with a wrap-around garden, including a sunny seating area to the front set behind a charming white picket fence, and to the rear a sun terrace and lawn where the stunning countryside views can be fully enjoyed. A driveway provides parking for two vehicles and leads to the garage. No chain

Council Tax band: E

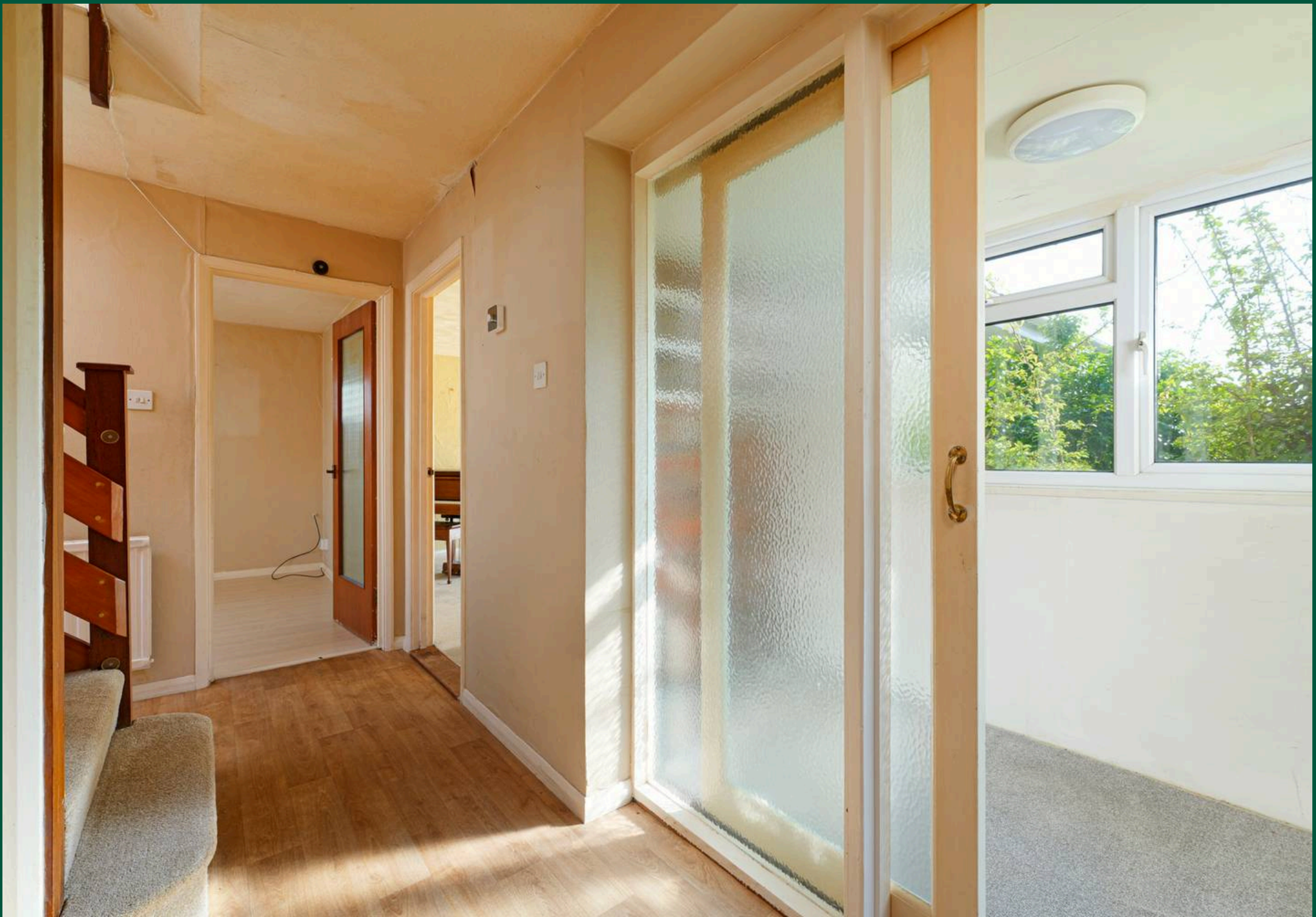
Tenure: Freehold

EPC Energy Efficiency Rating: C

EPC Environmental Impact Rating:











Laing Bennett

Laing Bennett Ltd, The Estate Office, 8 Station Road – CT18 8HP

01303 863393 • info@laingbennett.co.uk • www.laingbennett.co.uk/

DISCLAIMER – These details are for guidance only and do not form part of an offer or contract. Measurements are approximate. Laing Bennett Ltd and the Vendor/Landlord accept no liability. Services and appliances are untested. Applicants must make their own checks. Items shown may not be included. No staff have authority to give warranties.