



OVER 60?

Secure this property
for up to **59% less!**

Price
£350,000

Freehold

3x  1x  1x 

**Townsend Road,
Snodland, Kent, ME6**

Wards
Helping you move forwards



Main features

- **Perfectly positioned family home and beautifully presented inside**
- **Great size living space which is bright and airy throughout**
- **Easy parking plus a garage**
- **So much love and care has gone into the garden - perfect for summer months**
- **Centrally located between M2 and M20 and a short distance to the train station**

Accommodation

GROUND FLOOR

Entrance Hall

Kitchen: 8'5 x 7'9 (2.57m x 2.36m)

Lounge/Diner: 16'9 x 14'5 (5.11m x 4.40m)

Conservatory: 12'3 x 7'6 (3.74m x 2.29m)

FIRST FLOOR

Landing

Bedroom 1: 11'7 x 8'1 (3.53m x 2.47m)

Bedroom 2: 10'6 x 7'11 at widest point (3.20m x 2.41m)

Bedroom 3: 7'5 x 6'3 (2.26m x 1.91m)

Bathroom: 8'1 x 6'1 (2.47m x 1.86m)

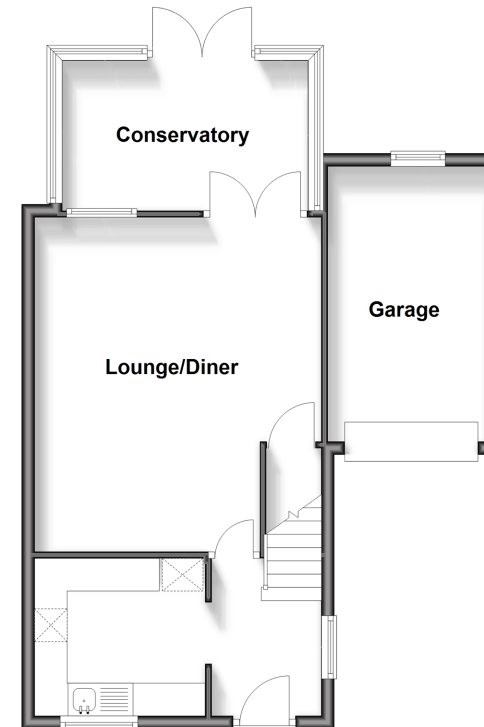
OUTSIDE

Garage and Driveway

Rear Garden

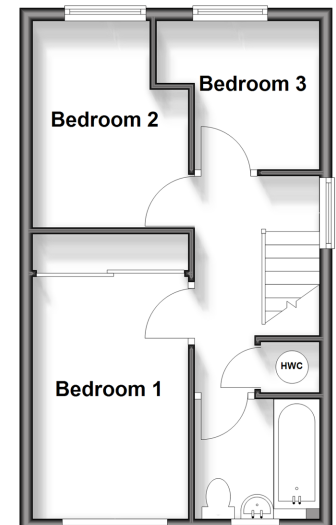
Ground Floor

Approx. 53.4 sq. metres (575.2 sq. feet)



First Floor

Approx. 33.6 sq. metres (362.2 sq. feet)



Call Snodland - 01634 245055 ■ wardsof Kent.co.uk

■ Legal advice should be taken to verify fixtures/fittings, planning, alterations and/or lease details
 ■ Through a Homewise Home For Life Plan people aged 60+ can secure this property for up to 59% less, by purchasing a Lifetime Lease.

■ Appliances & services are untested, dimensions are approximate and floor plans are not to scale



13821781/20250703/LK/LK