



**Apt 29, Bedford House, 14 Bedford Street Princesshay Square**

**£975 PCM**

Exeter



## Apartment 29

Bedford House, Exeter

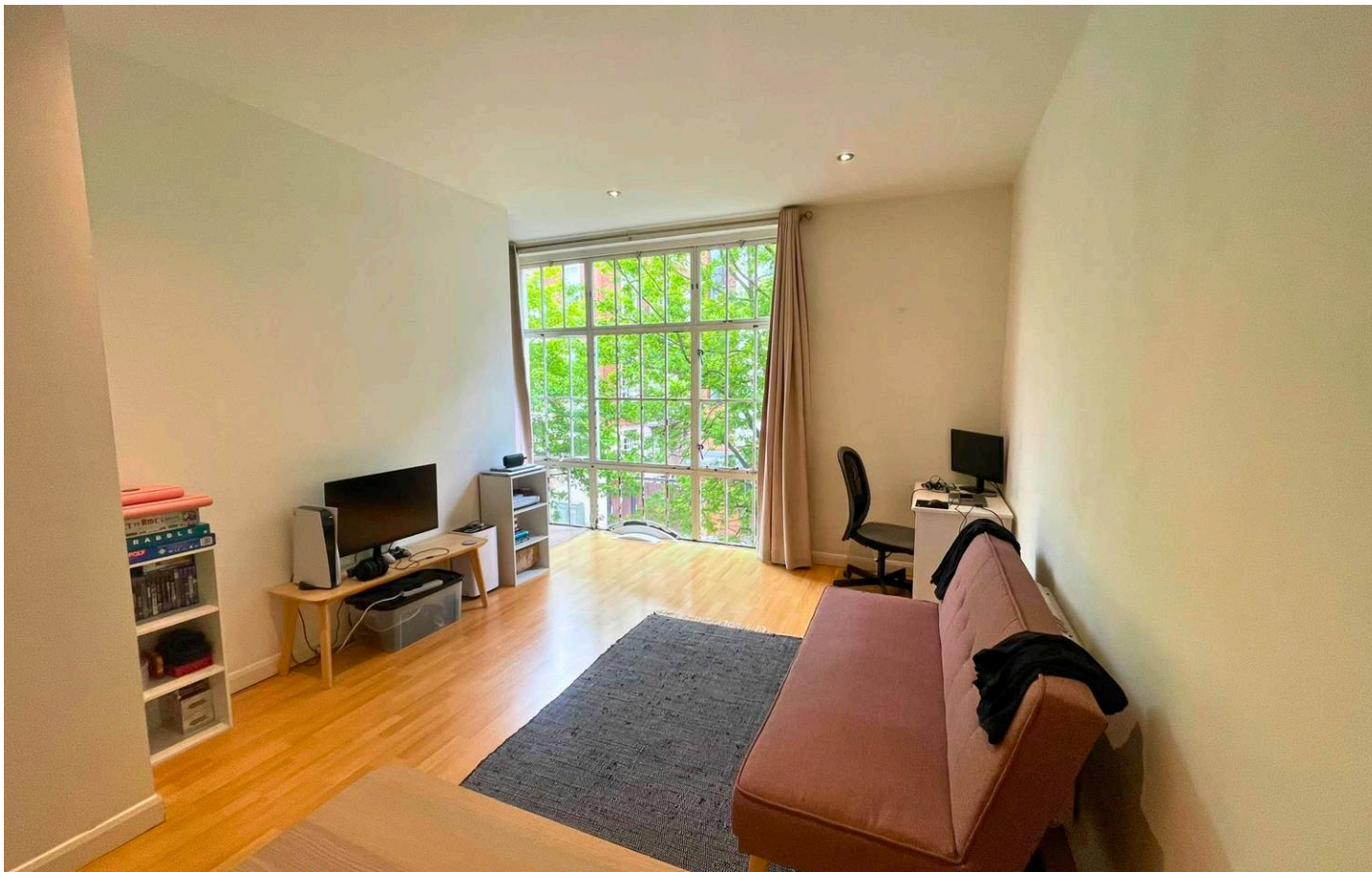
Stylish 1-bed apartment in Exeter's Princesshay. Open-plan living, modern kitchen, double bedroom, lift, secure entry, city views. Close to shops, dining, transport, and Cathedral Quarter. Council Tax band: B

Tenure: Leasehold

EPC Energy Efficiency Rating: C

EPC Environmental Impact Rating:

- Prime city-centre apartment in Princesshay
- Bright open-plan living/kitchen space ideal for modern living and entertaining.
- Contemporary fitted kitchen with integrated appliances.
- Spacious double bedroom with built-in wardrobe/storage.
- Secure communal entrance with lift access for convenience and security.
- Moments from Princesshay Shopping Centre – Exeter's premier retail and leisure destination.
- Walking distance to Exeter Cathedral and the historic Cathedral Green.
- Close to Exeter Central Station for easy commuting and regional travel.
- Surrounded by cafés, restaurants, bars, and entertainment venues in the city centre.
- Easy access to the Quayside and riverside walks, offering leisure and outdoor activities nearby.



### **Lounge**

A bright and contemporary open-plan living space offering ample room for both relaxing and dining, with a large window allowing plenty of natural light and views across Princesshay Square.

### **Kitchen**

Modern fitted kitchen with a range of wall and base units, integrated appliances, and practical worktop space, designed for both convenience and everyday living.

### **Bedroom**

A well-proportioned double bedroom providing a peaceful retreat, complete with built-in storage and space for additional furnishings.

### **Bathroom**

A stylish and well-appointed bathroom fitted with a bath and shower over, wash basin, and WC, finished to a modern standard.

