



Harcourt Close, TW7

£549,950

Dexters



Harcourt Close, TW7

Situated in a sought after residential cul-de-sac just moments from the Thames Riverside and Syon Park, is this well presented three bedroom terraced family home. The property offers bright and well balanced accommodation with a private rear garden.

The property features a spacious through reception room, a contemporary fitted kitchen, three generously sized bedrooms and a modern family bathroom. To the front, there is the added benefit of a brick built storage cupboard.

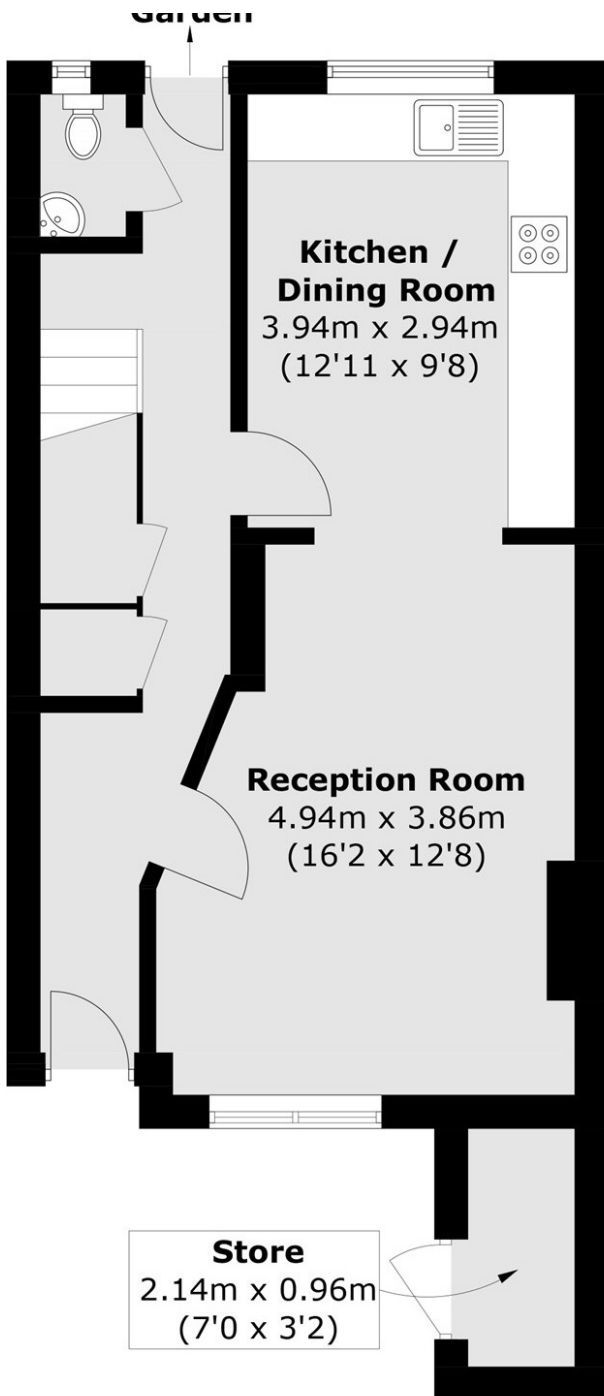
Harcourt Close is situated in the heart of Old Isleworth, an area renowned for its historic charm including Syon House, scenic walks along the River Thames, a range of local amenities, green spaces and well regarded schools. While Isleworth Station is approximately 0.6 miles away, offering convenient access into central London for commuters.

Features

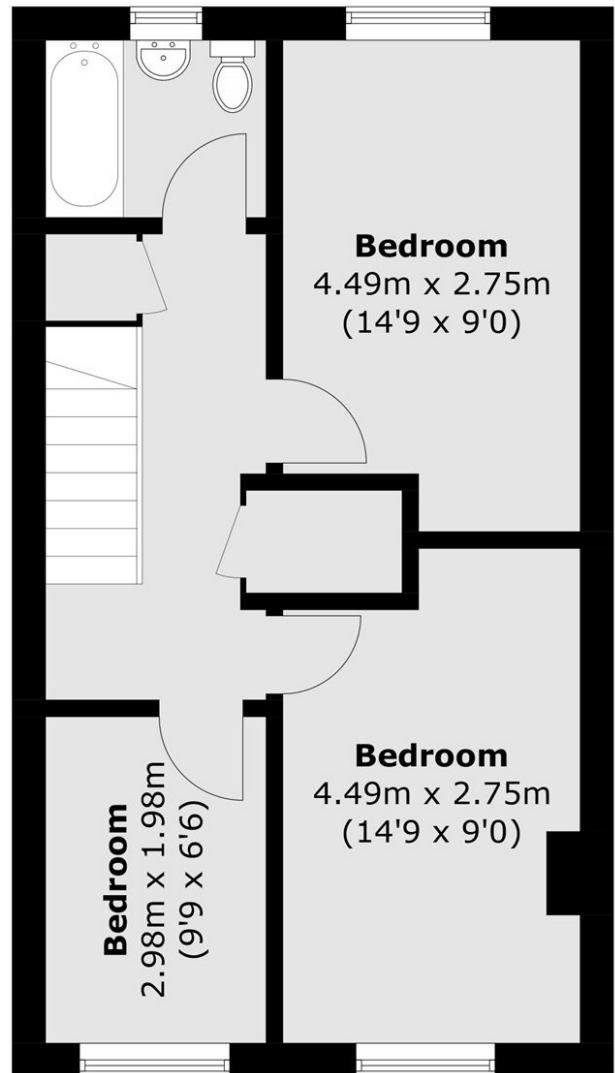
- Three Double Bedrooms
- Private Rear Garden
- Central Location
- Rear Access
- Downstairs WC
- Well-Presented



Harcourt Close, Isleworth, TW7



Ground Floor



First Floor