



**Price**  
**£500,000**

**Freehold**

4x  2x  2x 

**Cross Avenue, Wickford,  
Essex, SS12**

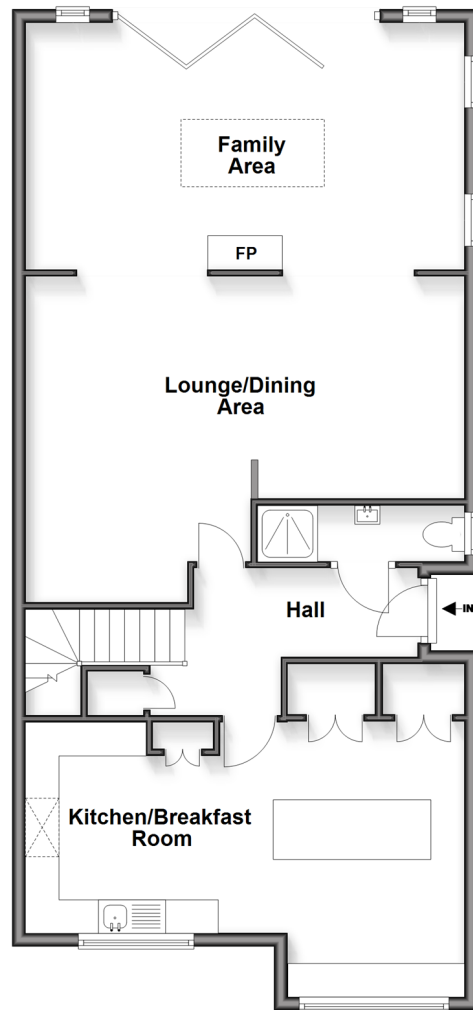
**OVER 60?**

Secure this property  
for up to **59% less!**

 **DOUGLAS  
ALLEN**  
Helping you move forwards

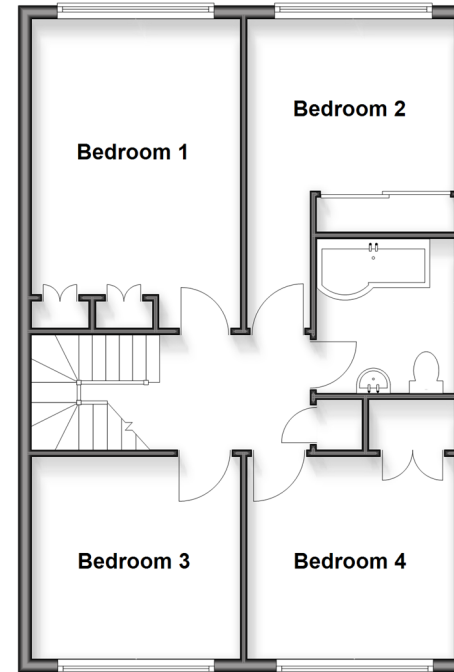
## Ground Floor

Approx. 90.1 sq. metres (969.6 sq. feet)



## First Floor

Approx. 59.9 sq. metres (644.7 sq. feet)



## Accommodation

### GROUND FLOOR

Hallway

Lounge/Dining Area: 20'7 x 15'11 (6.28m x 4.85m)

Kitchen/Breakfast Room: 20'4 x 13'4 (6.20m x 4.07m)

Family Area: 19'7 x 11'10 (5.97m x 3.61m)

Shower Room

### FIRST FLOOR

Landing

Bedroom 1: 15'1 x 10'1 (4.60m x 3.08m)

Bedroom 2: 15'2 x 10'2 (4.63m x 3.10m)

Bedroom 3: 10'2 x 10'0 (3.10m x 3.05m)

Bedroom 4: 10'0 x 9'8 (3.05m x 2.95m)

Bathroom

### OUTSIDE

Rear Garden

Driveway





## Main features

- Exceptional family home
- Open plan family space featuring log burner
- Beautifully fitted kitchen/breakfast room featuring island
- Extended accommodation boasting a garage conversion as well as single storey rear extension
- A popular choice of schools nearby
- Within walking distance of the town centre and railway station



### Nearest Schools

Primary Schools: Grange Primary 0.0 miles, North Crescent Primary 0.4 miles, Wickford Junior School 0.5 miles

Secondary Schools: The Bromfords School 0.1 miles,



### Transport Information

Train Stations: Wickford 0.6 miles, Battlesbridge 2.5 miles, Pitsea 3.4 miles



### Address

Cross Avenue, Wickford, Essex, SS12



### Directions

For directions to this property please contact us.



