



Tanner Street, SE1

£1,100,000

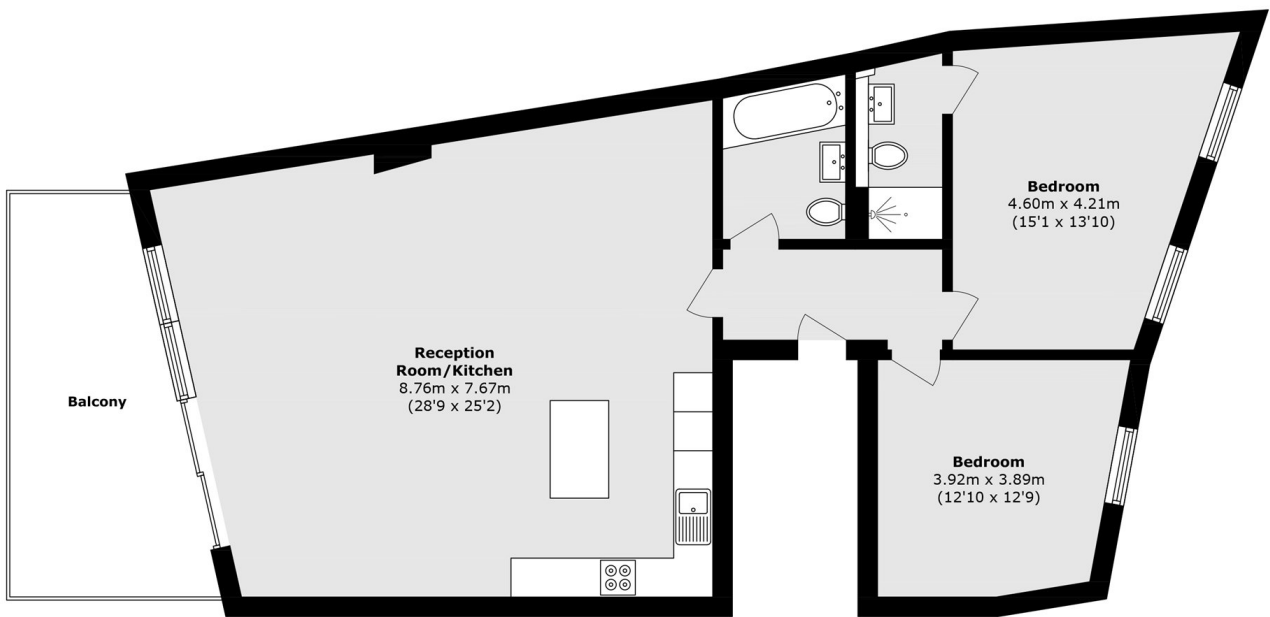
Located in Shad Thames, this two double bedroom flat is in excellent condition and has a large open plan kitchen living area, private balcony, two modern bathrooms, ample storage and is being sold chain free.

Tanner Street is located only 0.6 miles from London Bridge station and is surrounded by a wide range of shops, restaurants, cafés and artisan delis.

Features

- Two Double Bedrooms
- Two Bathroom
- Beautiful Period Features
- Excellent Condition
- Large Private Balcony
- Chain Free

Tanner Street, London, SE1



Total area (approx.): 101.2 sq. m (1089.3 sq. ft)
Balcony area (approx.): 14.8 sq. m (159.3 sq. ft)