



Harper Court
Burton-On-Trent

burchell
edwards

Harper Court Burton-On-Trent DE13 0NB

for sale offers over
£190,000



Property Description

Burchell Edwards are delighted to market this 3 Bedroom Mid-Terraced house. The property is situated on a lovely, private road in the Horninglow area. The property greets you with an enclosed front garden that pushes the property back from the pavement providing a more peaceful setting. The property itself is finished to a superb standard and boasts a lovely downstairs comprising of: a wonderful living room, a compact kitchen and a modern conservatory. On the first floor of the property you will find a spacious landing which provides access to the: loft, a useful storage cupboard, 3 good sized bedrooms as well as the family bathroom. Outside to the rear is a large, private enclosed garden which contains: a lawn area, a slabbed paving area as well as some concrete storage areas. To finalise the exterior space, you will also find a garage paired with a parking space to the rear of the rear garden. Viewing really is essential of this lovely, spacious property!

Entrance Porch

Storage cupboard and wooden flooring.

Lounge

Gas fire, two central heating radiator and carpet.

Dining Room

Window to front elevation, central heating radiator and wooden flooring.

Kitchen

Window to front elevation, a range of wall and base units with work surface over incorporating a sink with drainer unit, integrated oven and hob, space and plumbing for washing machine, wooden flooring.

Conservatory

Window and door to rear elevation, central

heating radiator and tiled flooring.

Landing

Loft access, storage cupboard and carpet.

Bedroom One

Window to rear elevation, central heating radiator, carpet and built in wardrobe.

Bedroom Two

Window to front elevation, central heating radiator and carpet.

Bedroom Three

Window to rear elevation, central heating radiator and carpet.

Bathroom

Window to rear elevation, W.C, wash hand basin, shower over bath, central heating radiator and vinyl flooring.

Front Garden

Lawned area. concrete pathway enclosed by brick wall.

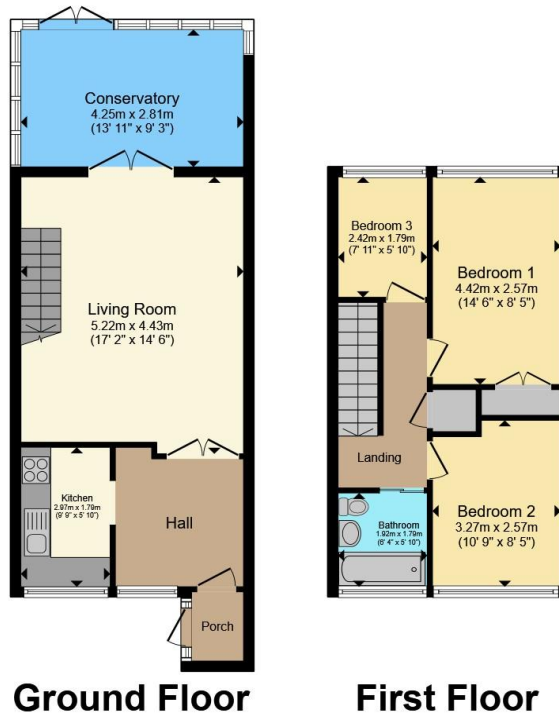
Rear Garden

Lawned area, decking area, concrete storage area, gate to rear and access to garage.









Total floor area 89.8 m² (966 sq.ft.) approx

This floor plan is for illustrative purposes only. It is not drawn to scale. Any measurements, floor areas (including any total floor area), openings and orientation are approximate. No details are guaranteed, they cannot be relied upon for any purpose and they do not form part of any agreement. No liability is taken for any error, omission or misstatement. A party must rely upon its own inspection(s). Powered by www.propertybox.io



To view this property please contact Burchell Edwards on

T 01283 530 169
E burton@burchelledwards.co.uk

Britannia House Station Street
 BURTON-ON-TRENT DE14 1AN

EPC Rating: D Council Tax
 Band: A

Tenure: Freehold

view this property online burchelledwards.co.uk/Property/BUT203385



1. MONEY LAUNDERING REGULATIONS Intending purchasers will be asked to produce identification documentation at a later stage and we would ask for your co-operation in order that there will be no delay in agreeing the sale. 2. These particulars do not constitute part or all of an offer or contract. 3. The measurements indicated are supplied for guidance only and as such must be considered incorrect. Potential buyers are advised to recheck measurements before committing to any expense. 4. We have not tested any apparatus, equipment, fixtures, fittings or services and it is in the buyers interest to check the working condition of any appliances.

Burchell Edwards is a trading name of Connells Residential which is registered in England and Wales under company number 1489613, Registered Office is Cumbria House, 16-20 Hockliffe Street, Leighton Buzzard, Bedfordshire, LU7 1GN. VAT Registration Number is 500 2481 05.

See all our properties at www.burchelledwards.co.uk | www.rightmove.co.uk | www.zoopla.co.uk

Property Ref: BUT203385 - 0003