



## GRAFTON SQUARE, SW4

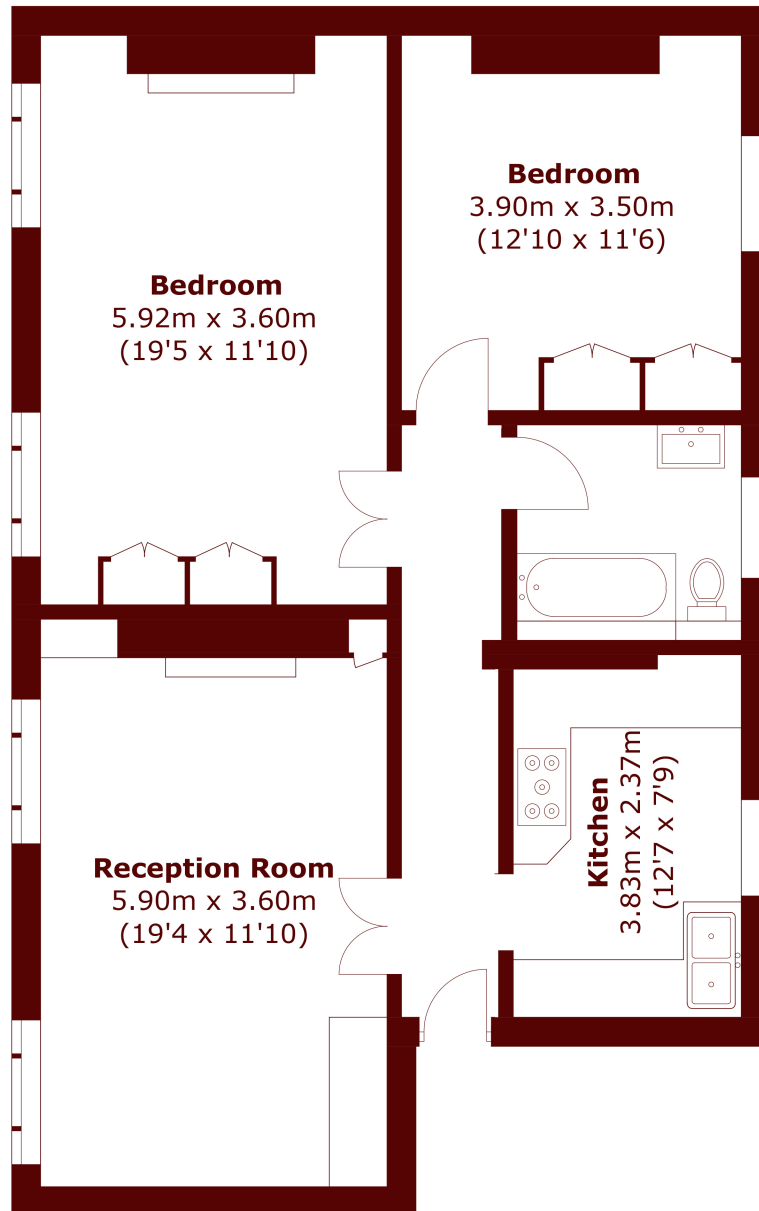
£2,800 per month

This beautiful lateral apartment is flooded with natural light and has been finished to a high standard throughout.

Two large bedrooms  
Spacious  
Lateral flat

Wooden flooring  
Prestigious square  
Prime Old Town

# STEP INSIDE GRAFTON SQUARE



Total area (approx.): 80.8 sq. m (869.7 sq. ft)

**Clapham**  
020 8772 9200

Energy Rating: We aim to make our particulars both accurate and reliable. However, they are not guaranteed; nor do they form part of an offer or contract. If you require clarification on any points then please contact us, especially if you're traveling some distance to view. Please note that appliances and heating systems have not been tested and therefore no warranties can be given as to their good working order

**MARSH &  
PARSONS**