



Water Lane, SE14

£315,000

A bright and spacious one-bedroom apartment set within a modern development, beautifully presented throughout. The property offers the added benefits of an allocated parking space and its own private garage.

Ideally positioned in the heart of New Cross, just moments from New Cross Gate and New Cross Overground stations. The area offers a vibrant mix of cafés, bars, and features a popular weekly farmers' market.

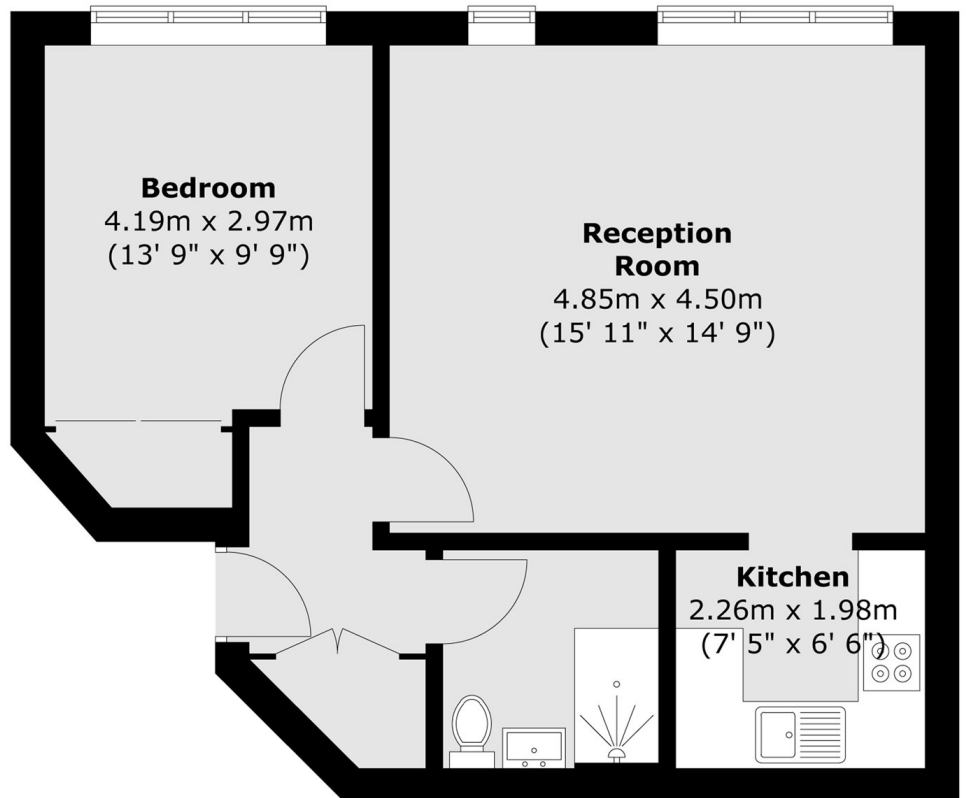
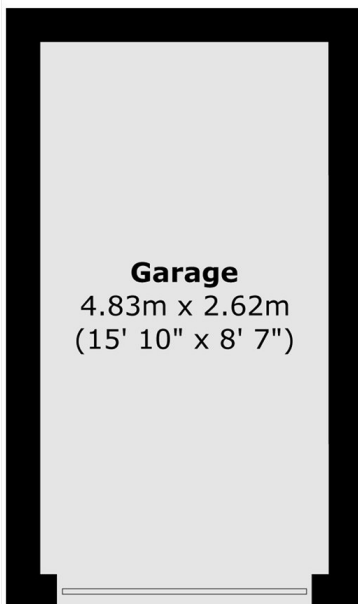
Features

- One Bedroom
- Private Garage
- First Floor
- Great Condition
- Close To Transport Links

Water Lane, London, SE14

First Floor

Ground Floor



Total area (approx.) : 47.4 sq. m (510 sq. ft)
Total garage area (approx.) : 12.6 sq. m (136 sq. ft)