

Jay Gardens, Hailsham



- 3D Virtual Tour
- No Onward Chain
- Detached Home In Popular Location
- Spacious Lounge
- Kitchen/Dining Room & Utility
- Three Bedrooms
- Primary Bedroom Offering An Ensuite Shower Room/WC
- Family Bathroom/WC
- Landscaped Gardens
- Off Road Parking & Garage



Freehold

£424,950

3 BEDROOM 1 RECEPTION 2 BATHROOM 1 GARAGE

Jay Gardens, Hailsham

Jay Gardens, Hailsham

DESCRIPTION

3D Virtual Tour | Detached Home | Popular Location | Close to Bus Stop & Local Shop | No Onward Chain | Spacious Lounge | Kitchen/Dining Room | Three Bedrooms | Ensuite To Primary Bedroom | Family Bathroom/WC | Off Road Parking | Garage | Viewing Advised

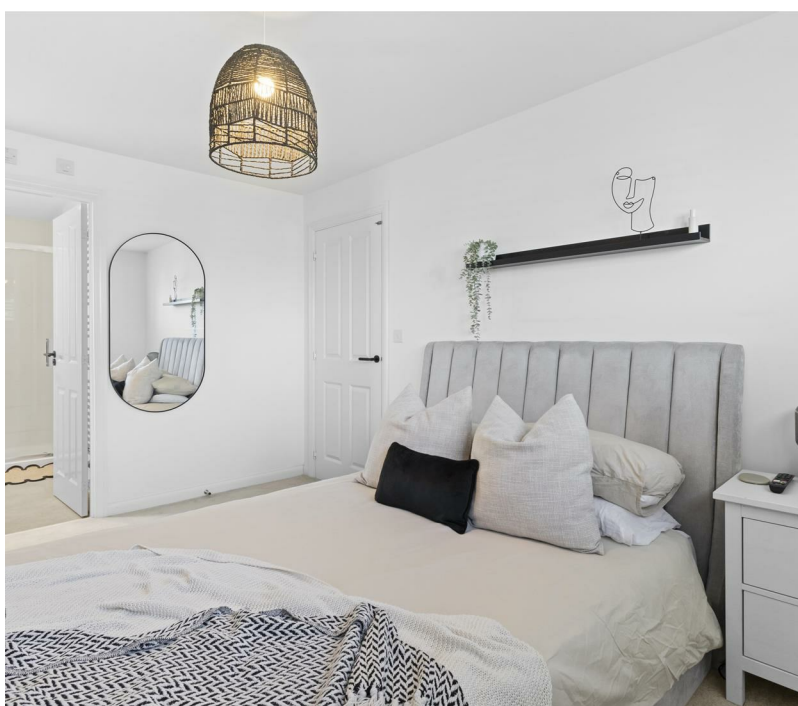
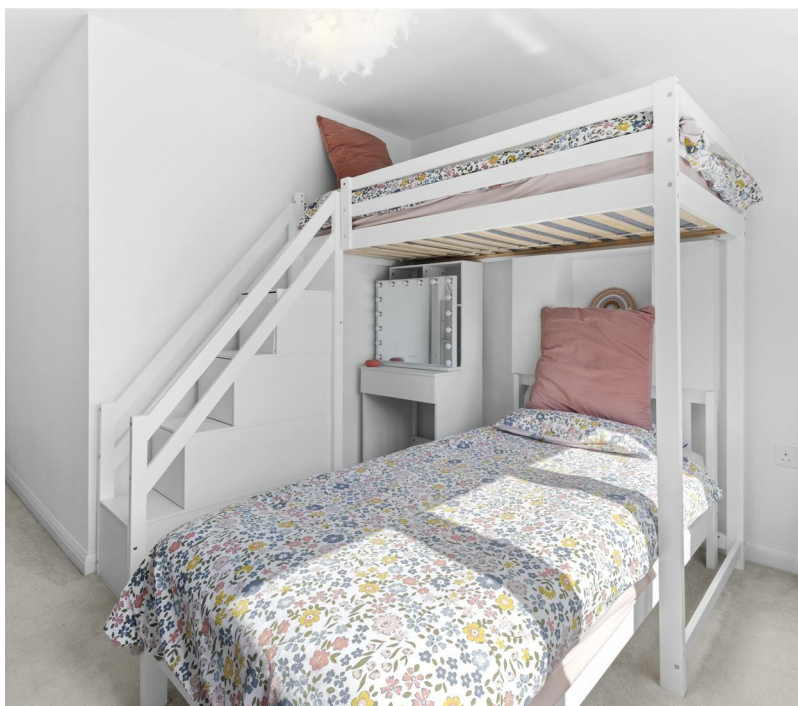
Stevens and Carter are pleased to market this beautifully presented detached family home situated in this popular and convenient location. Positioned within walking distance local shops, school and bus routes to further afield, it is one certainly not to miss.

Upon entry, the spacious hallway welcomes you in and provides access to all principle rooms alongside under stairs storage. Situated to the front is the lovely size lounge. Here you will find ample space for your soft furnishings and the large window to the front allows plenty of natural sunlight to come flooding in.

The modern kitchen/dining room lies to the rear and boasts ample cupboards for storage, work surfaces and fitted appliances. The dining area is perfect for entertaining with family and friends. Windows and patio doors from here offer look and afford access onto the rear garden. To complete the ground floor accommodation, a handy utility room and ground floor WC are offered.

On the first floor you will find three good size bedrooms. The primary bedroom sits to the front and offers plenty of space for your associated bedroom furniture alongside a well appointed ensuite shower room/WC. The remaining bedrooms are close by and are serviced by a family bathroom which comprises of a bath with shower over, wash basin, WC and are complimented by modern tiling.

Externally, the rear garden is mainly laid to lawn with a large patio that captures the sun throughout the day. Gated side access leads to the front where you will find off road parking that leads to the detached garage. This currently is used as a home office, but



Jay Gardens, Hailsham

- Hallway 5.56m x 2.03m (18'3 x 6'8)
- Lounge 4.37m x 3.43m (14'4 x 11'3)
- Kitchen/Dining Room 5.61m x 3.12m (18'5 x 10'3)
- Utility Room 1.91m x 1.60m (6'3 x 5'3)
- Ground Floor WC 1.91m x 1.70m (6'3 x 5'7)
- First Floor Landing 3.02m x 1.02m (9'11 x 3'4)
- Bedroom One 4.06m x 3.30m (13'4 x 10'10)
- Ensuite 2.49m x 1.91m (8'2 x 6'3)
- Bedroom Two 5.38m x 3.30m (17'8 x 10'10)
- Bedroom Three 3.53m x 2.18m (11'7 x 7'2)
- Bathroom/WC 2.18m x 2.06m (7'2 x 6'9)
- Garage/Office Room