

OVER 60?

Secure this property
for up to **59% less!**



Guide Price
£225,000
Leasehold

2x  1x  1x 

Oak Grange, Uplands Road, Totland Bay,
Isle of Wight, PO39

Pittis 
Helping you move forwards



Main features

- Ground floor home with ensuite & summer house with power
- Open plan living design with floods of light throughout
- Allocated parking & private sunny garden
- Colwell Bay beach on the doorstep & a moments walk to Freshwater

Accommodation

GROUND FLOOR

Hall

Lounge: 16'3 x 14'9 (4.96m x 4.50m)

Kitchen: 14'2 x 7'2 (4.32m x 2.19m)

Bathroom: 7'1 x 6'3 (2.16m x 1.91m)

Bedroom 1: 13'0 x 12'2 (3.97m x 3.71m)

Ensuite: 6'5 x 3'0 (1.96m x 0.92m)

Bedroom 2: 13'1 x 10'6 (3.99m x 3.20m)

OUTSIDE

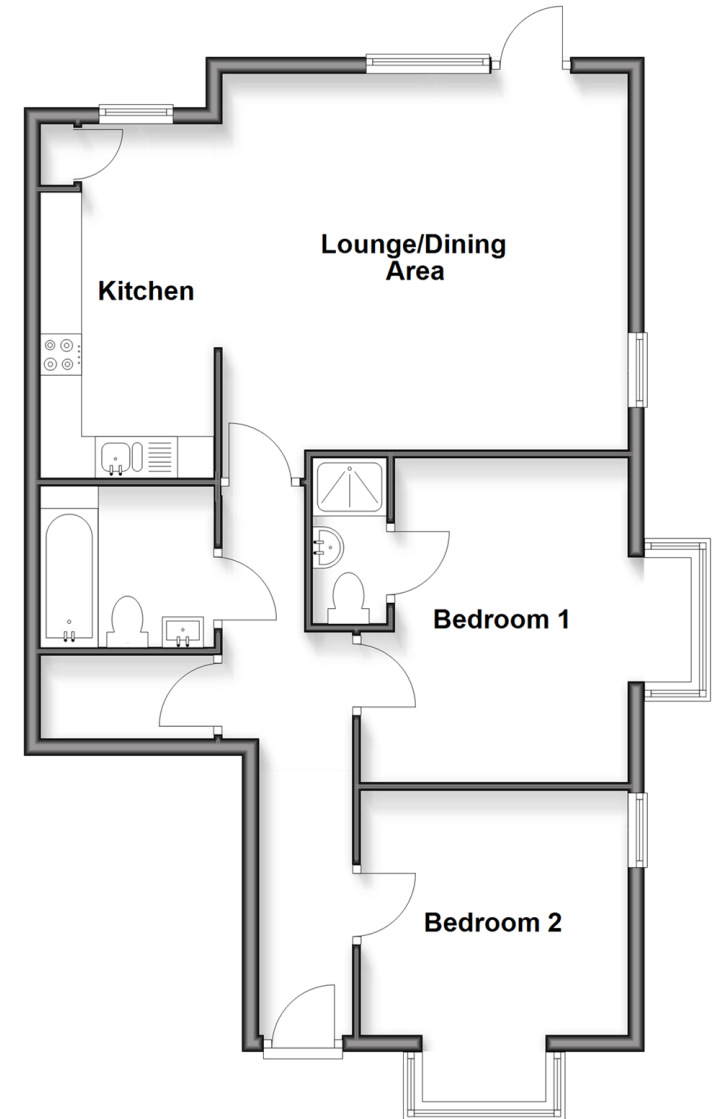
- Rear Garden
- Allocated Parking
- Summer House

Call Freshwater - 01983 756222 ■ pittis.co.uk

- Legal advice should be taken to verify fixtures/fittings, planning, alterations and/or lease details
- Appliances & services are untested, dimensions are approximate and floor plans are not to scale
- Through a Homewise Home For Life Plan people aged 60+ can secure this property for up to 59% less, by purchasing a Lifetime Lease

Ground Floor

Approx. 73.3 sq. metres (789.3 sq. feet)



60218680/20260119/CG/CG