



Bryanston Square, W1H
£800,000

Dexters



Bryanston Square, W1H

A two bedroom apartment in an attractive period building facing Bryanston Square. The apartment has a private entrance and is offered chain free.

The apartment has been refurbished in recent years and has a modern integrated kitchen, main bedroom with en-suite shower room, second bedroom, guest cloakroom and a reception room with space to dine. Additionally there is storage space from the second bedroom.

Bryanston Square is considered one of London's most desirable Garden Squares, offering resident gardens in the heart of central London. Located between Hyde Park and Regent's Park. Bond Street, Marble Arch and Baker Street stations are local.

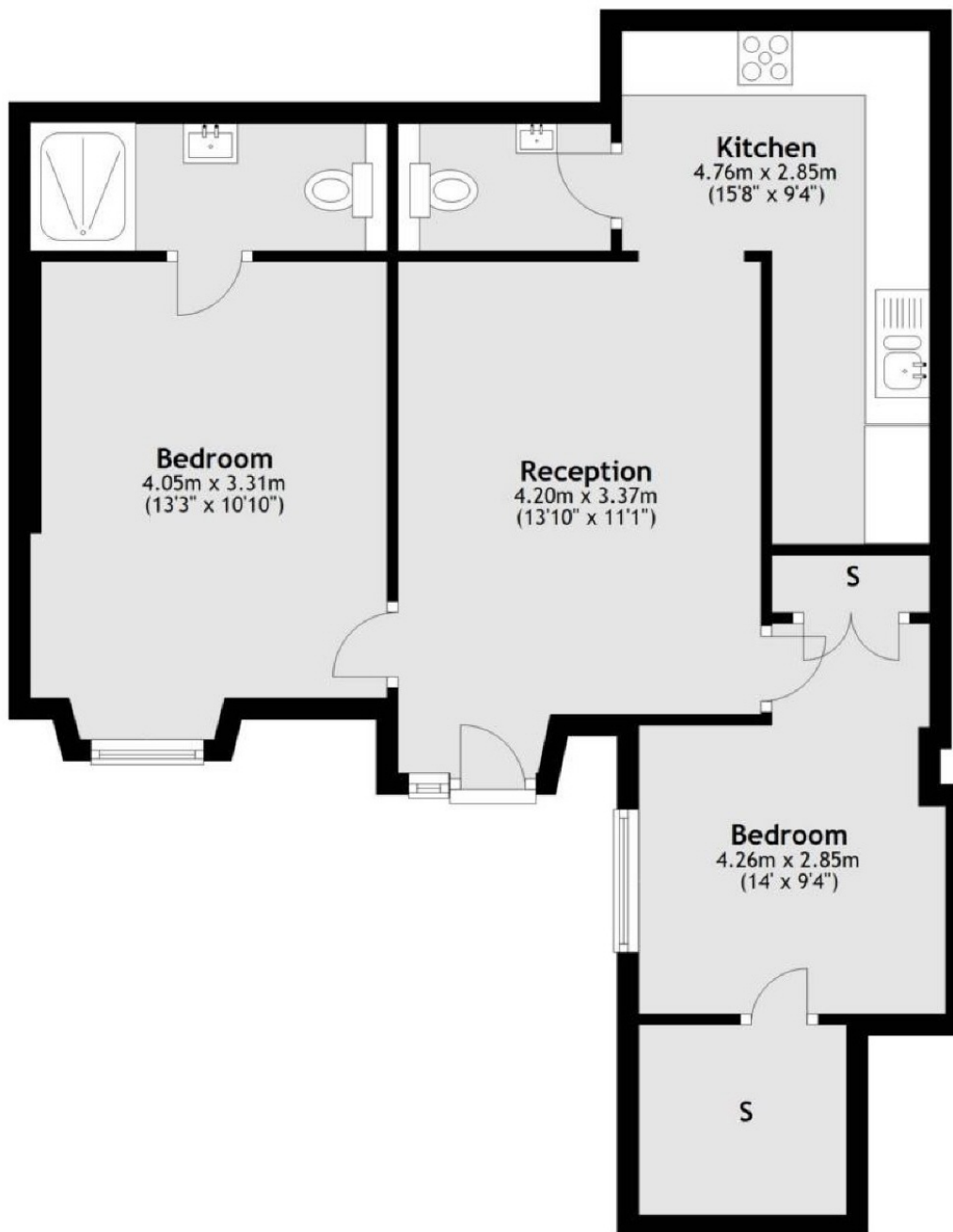
Features

- London Square Location
- Two Bedrooms
- En-Suite Shower Room
- Guest WC
- Contemporary Styled Interior
- Direct Access From Square



Bryanston Square, London, W1H

Lower Ground Floor



Total area: approx. 60.3 sq. metres (648.7 sq. feet)