

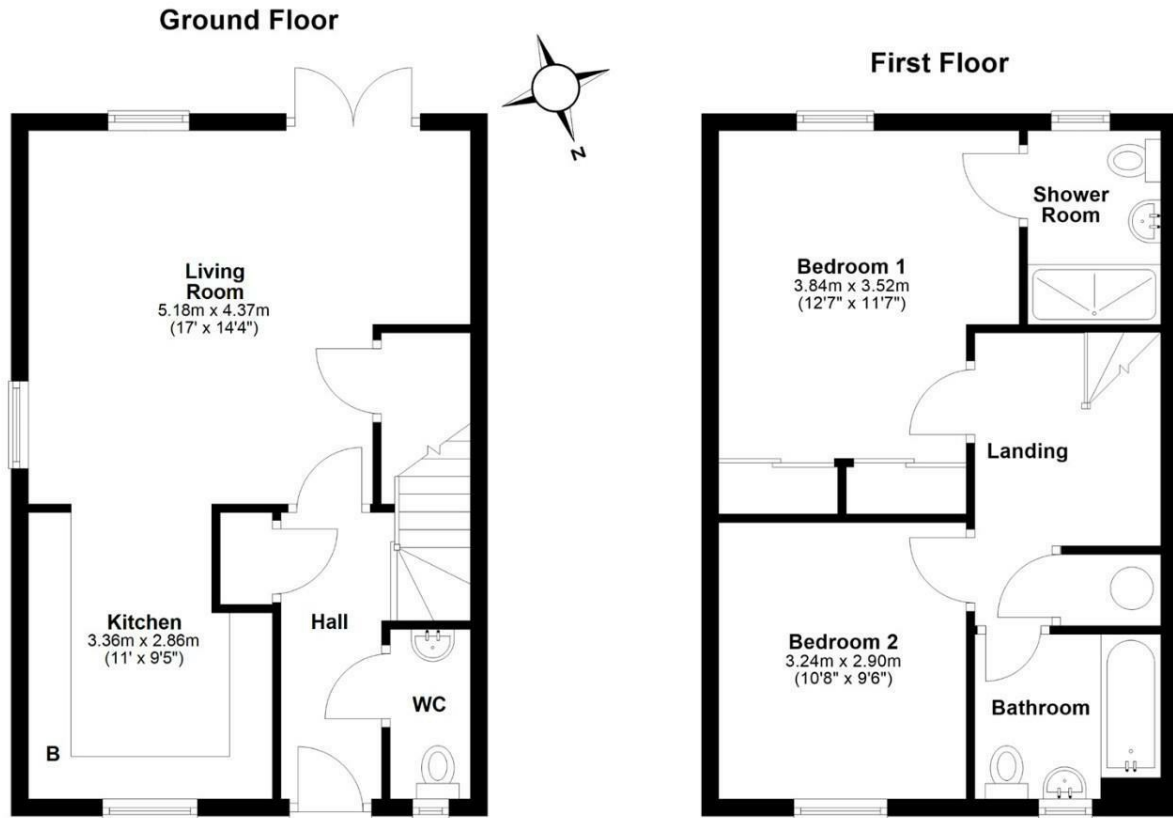


## 1 Harris Close, Hardwick, Cambridge, CB23 7EX

A modern semi-detached house, constructed by Hill Residential in 2021, beautifully presented throughout, making it an ideal first time buyer or investment purchase and located within this sought-after village.

- 2 bedroom semi-detached house
- 875 sqft / 81 sqm
- 2 bathrooms, 1 reception room
- Constructed in 2021
- Driveway parking
- NHBC guarantee - 5 years remaining
- EPC - B / 89
- South-facing garden
- Gas-fired central heating to radiators
- Underfloor heating to ground floor

**£400,000**



Approx. gross internal floor area 81 sqm (875 sqft)

