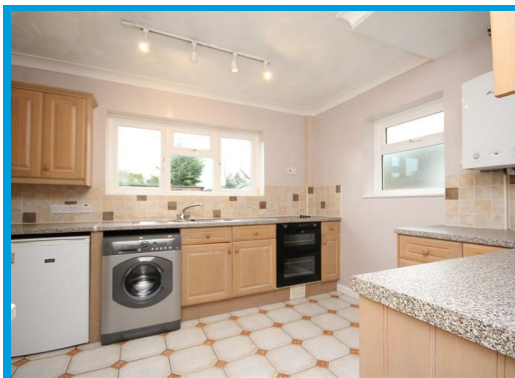
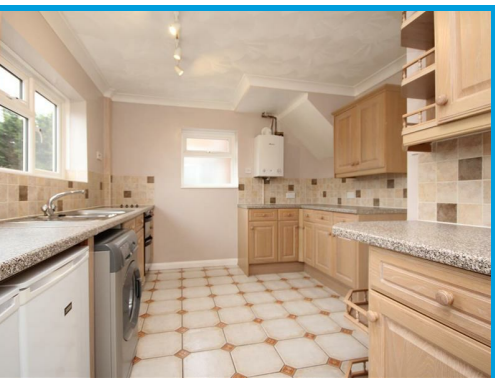




Queenhythe Road, Guildford Surrey, GU4 7NX

£2,150 PCM

Located in a highly sought after residential location, this well presented three bedroom family home boasts easy access to both Guildford and Woking and features ample off street parking, a garage and a private rear garden.



# Description

Located in a popular, quiet residential location within easy access to Guildford and Woking, this stunning three bedroom house is presented in excellent order throughout.

The ground floor comprises a large entrance hall leading to the spacious lounge with feature fireplace and access to the garden and a kitchen with appliances,

On the first floor the property has a master bedroom with ample built in wardrobes, two further bedrooms and a family bathroom with shower.

The property further features a good size plot with enclosed rear garden, driveway parking and a garage.

Local amenities are close by and Worplesdon train station is only a short drive away.

