



Highbury House

53 Highbury, Jesmond





Highbury House, 53 Highbury, Jesmond, NE2 3LN

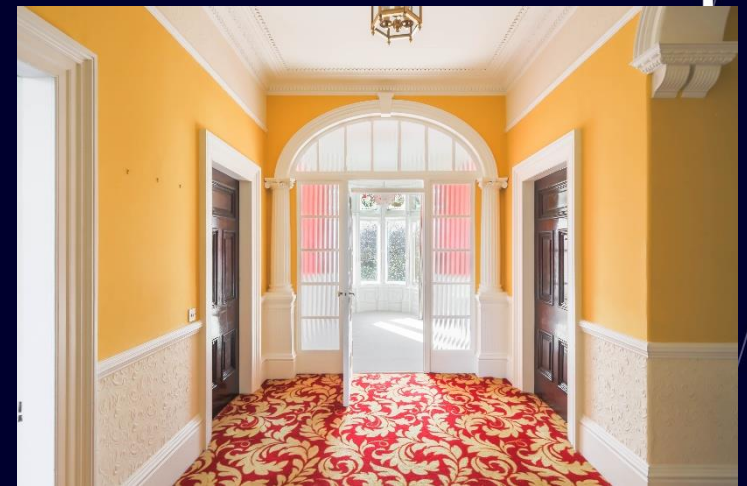
Highly impressive double fronted end of terrace home situated on the sought after street of Highbury within the heart of Jesmond.

Known for being one of the most prominent houses within Jesmond, this magnificent family home boasts over 4,300 sq.ft of accommodation, with further scope to extend and modernise if desired (subject to planning consent).

Highbury is ideally located for Newcastle City Centre, the nearby Metro stations and excellent local schooling. Nearby Brentwood Avenue, St Georges Terrace and Acorn Road offer a wide variety of independent shops, cafes and restaurants.

This special property is unique to the market and offers fabulous period features throughout with elaborate cornicing, period fireplaces and a magnificent stained glass feature window.

The home benefits from four substantial reception rooms, generous kitchen/breakfast room, utility, five bedrooms, two bathrooms, attached double garage, off street parking for two vehicles and private front/rear gardens.







The internal accommodation comprises: Ground Floor: An extra wide and tall entrance door leads into the entrance vestibule and onto the main reception hallway with lovely cornicing and staircase leading to the first floor, a cloakroom WC and useful understairs store cupboard | Drawing room situated to the front with magnificent period fireplace with cast iron gas fire and a large walk in bay window | Dining room with a further period fireplace and large walk in bay window | Sitting room situated to the rear | The kitchen breakfast room has been updated in the last 6 years with a range of modern units, as well as built in hob, extractor, oven, microwave and dishwasher | South facing conservatory with aspect over the private garden leads from the family room to the rear offshoot and connects to the rear lobby, large utility/shower room and separate pantry.

First Floor: Mid landing with feature stained glass window leading to a double bedroom at the rear of house | Main landing leading to three good sized double bedrooms and a fourth single turret room | Family bathroom | Shower room and separate WC.

Externally, to the front there is a driveway with large parking area, as well as an attached double garage. The gardens to the front and the rear are well maintained with beautiful flowers, lawned areas and hedges offering privacy. There is a patio/sitting area leading from the family room and utility room.

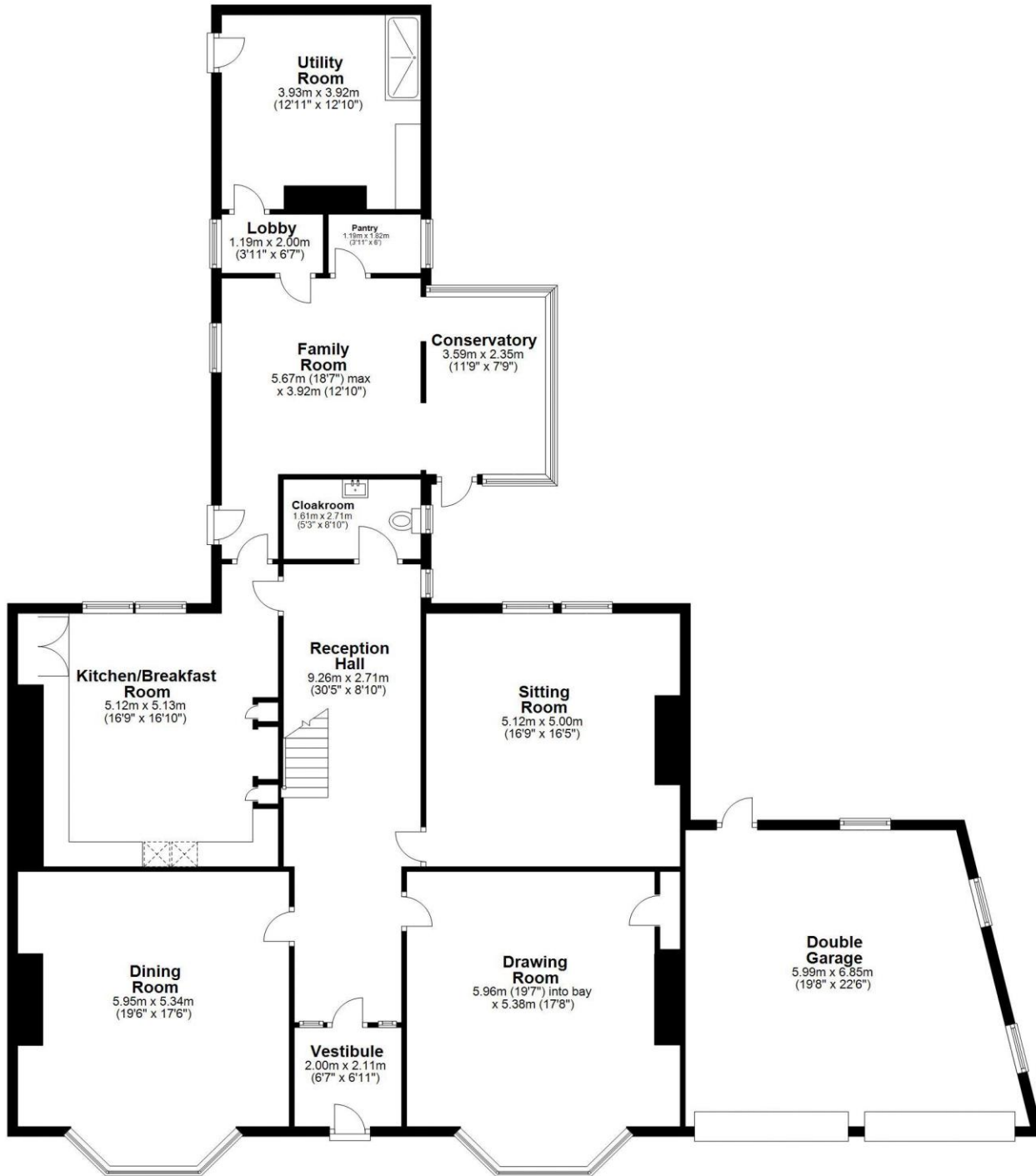
Offered to the market with No Onward Chain, early viewings are strongly encouraged at this excellent family home!
Services: Mains electric, gas, water and drainage | Tenure: Freehold | Council Tax: Band G | Energy Performance Certificate: Rating D

Price Guide: Guide Price £1,250,000



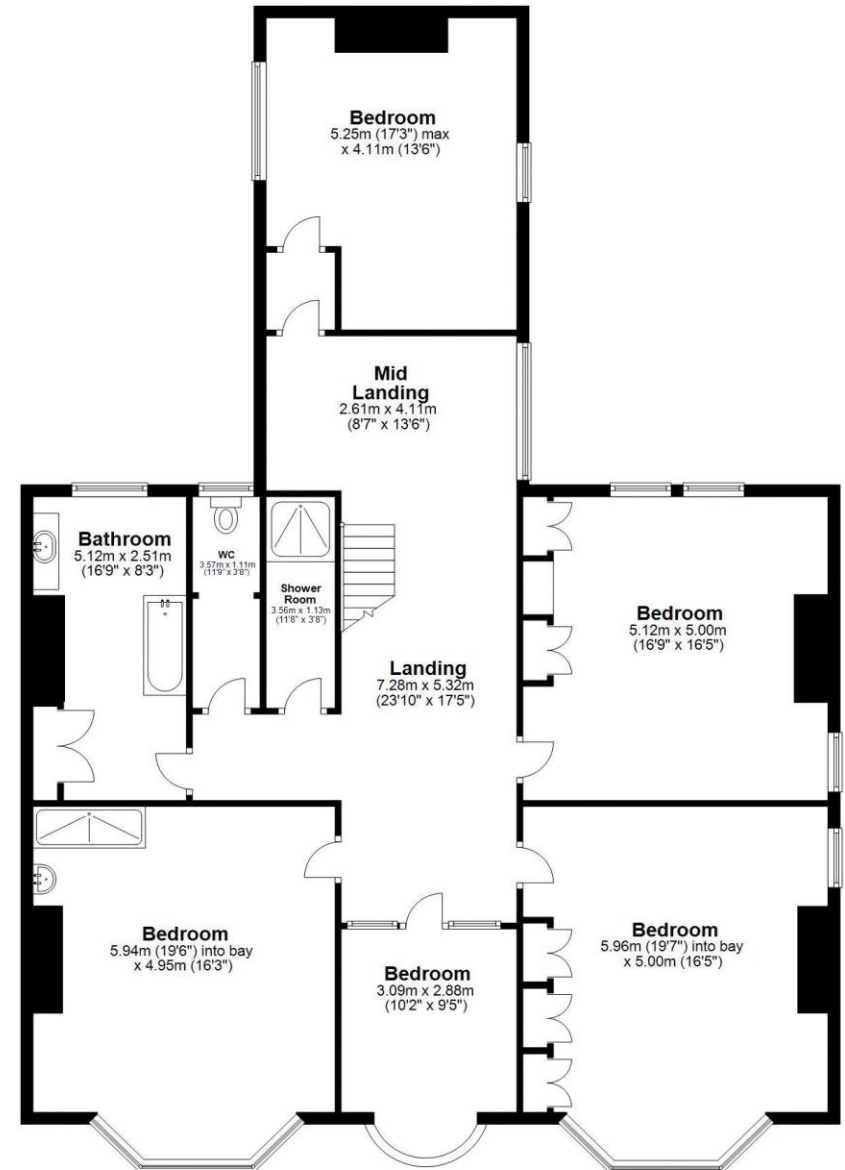
Ground Floor

Approx. 229.5 sq. metres (2470.5 sq. feet)



First Floor

Approx. 170.2 sq. metres (1832.2 sq. feet)



Total area: approx. 399.7 sq. metres (4302.7 sq. feet)

53 Highbury, -







SANDERSON
YOUNG

Regional Gosforth Office
95 High Street | Gosforth
Newcastle upon Tyne | NE3 4AA
gosforth@sandersonyoung.co.uk
0191 213 0033