



Northumberland
Properties

Lint Close Cottages Foxton Road, Alnmouth
£695,000





3 Lint Close Cottages Foxton Road

Alnmouth, Alnwick

Council Tax band: D

Tenure: Freehold

EPC Energy Efficiency Rating: E

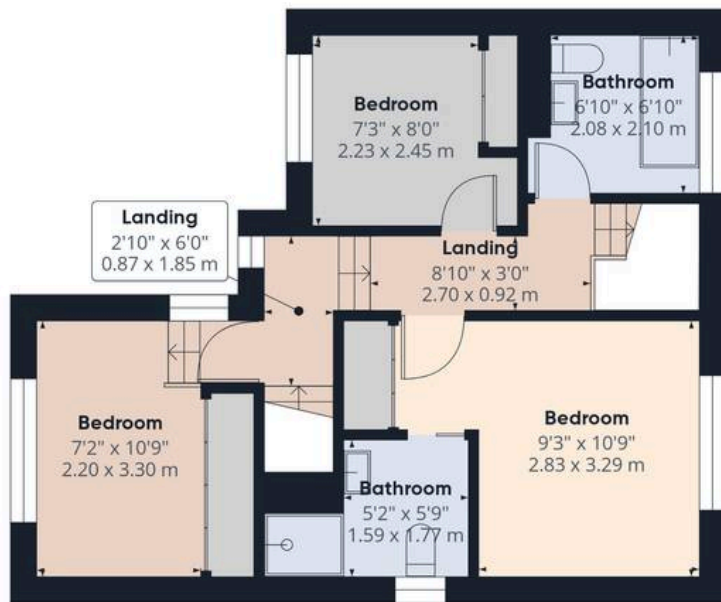
EPC Environmental Impact Rating: F

- Sought-after Alnmouth village location close to beach, golf course and amenities
- Four-bedroom accommodation arranged over three floors
- Private driveway parking and detached garage - a rare find in Alnmouth
- Beautifully presented throughout and ready to move into
- Contemporary kitchen with central island and breakfasting space
- Two versatile reception rooms including living room with log-burning stove
- Enclosed rear garden with patio seating areas and lawn
- Mainline railway station nearby with direct links to Newcastle, Edinburgh and London





First Floor Building 1



Floor 1 Building 1



Floor 2 Building 1



First Floor Building 2

Approximate total area⁽¹⁾

1485 ft²
138 m²

Reduced headroom

38 ft²
3.5 m²

(1) Excluding balconies and terraces

Reduced headroom

----- Below 5 ft/1.5 m

Calculations reference the RICS IPMS 3C standard. Measurements are approximate and not to scale. This floor plan is intended for illustration only.







Situated on the popular Foxtan Road within the heart of Alnmouth, Lint Close Cottages presents a rare opportunity to acquire a beautifully presented four-bedroom semi-detached home combining generous accommodation, private gardens, driveway parking and a detached garage, features that are increasingly difficult to find within one of Northumberland's most sought-after coastal villages.

Extending to approximately 1,141 sq ft and arranged over three floors, the property offers well-balanced accommodation.

Utilities:

Gas central heating

Log burning stove

Mains Water

Mains Waste

Mains Electric



Northumberland Properties

12 Market Street, Alnwick - NE66 1TL

01665660910 • info@northumberlandproperties.co.uk • www.northumberlandproperties.co.uk



Northumberland
Properties