



Pleasant Place

Islington, N1

£530 per week
(£2,296.67 pcm)

Light and spacious two bedroom top floor apartment in period conversion in Angel. The property consists of a spacious reception room, two equal sized double bedrooms, a separate kitchen and a modern bathroom.



Pleasant Place

Islington, N1

- Two Double Bedrooms
- Spacious Reception Room
- Separate Kitchen
- EPC Rating: D



Light and spacious two bedroom top floor apartment in period conversion in Angel. The property consists of a spacious reception room, two equal sized double bedrooms, a separate kitchen and a modern bathroom. Available February 2020. The property is a short walk from Angel Underground Station (Northern Line).

Tenure: To be advised
Furnished, Part Furnished

Additional tenant charges apply (fees apply to non-AST tenancies only)
 Tenancy Agreement Fee: £300
 References per Tenant/Guarantor: £60
 Inventory check (approx. £100 – £250 inc. VAT)
[chestertons.com/property-to-rent/applicable-fees](https://www.chestertons.com/property-to-rent/applicable-fees)

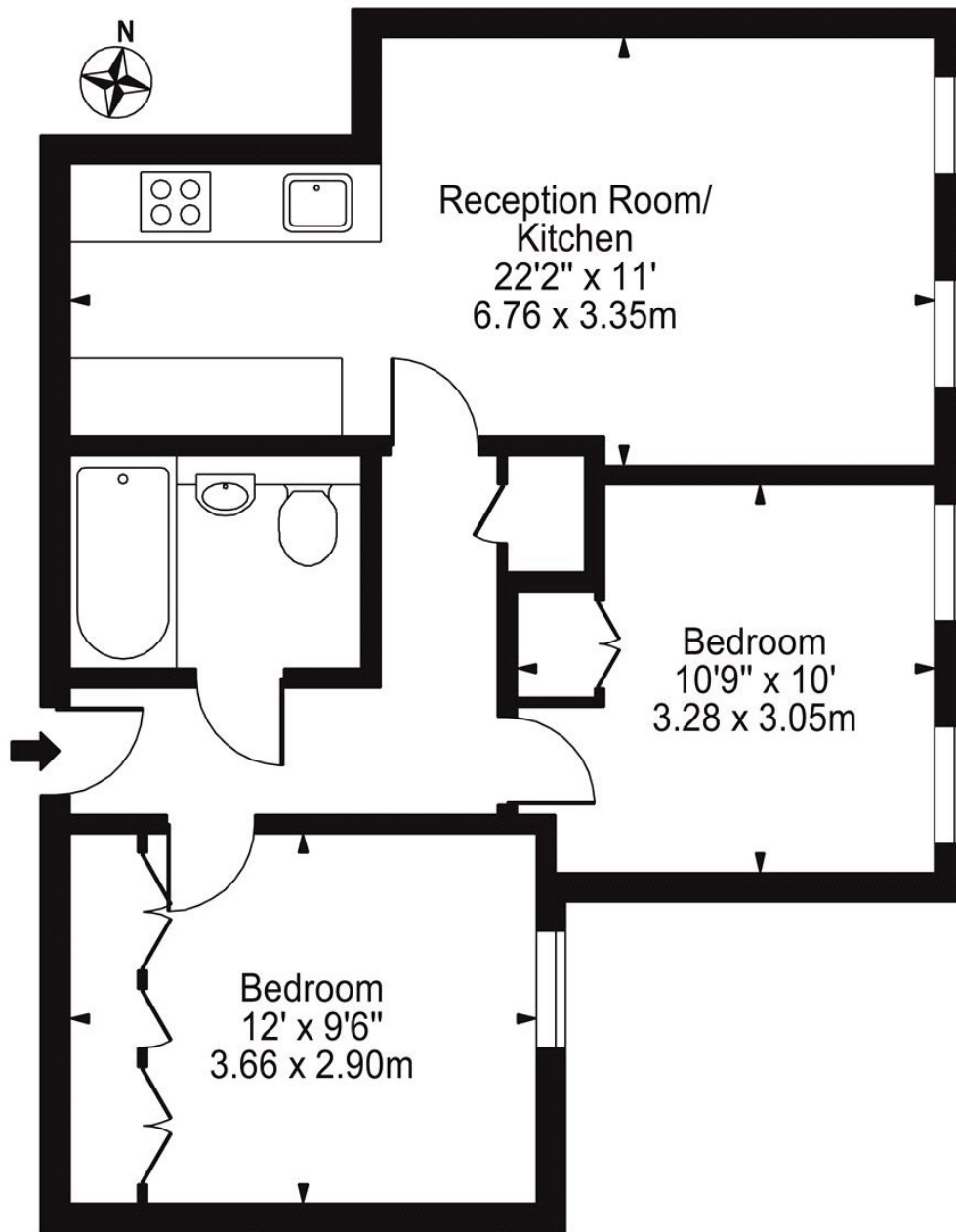
Energy Efficiency Rating		Environmental (CO ₂) Impact Rating	
Current	Potential	Current	Potential
100-125 kWh/m ² (A)	100-125 kWh/m ² (A)	100-125 g/m ² (A)	100-125 g/m ² (A)
126-150 kWh/m ² (B)	126-150 kWh/m ² (B)	126-150 g/m ² (B)	126-150 g/m ² (B)
151-200 kWh/m ² (C)	151-200 kWh/m ² (C)	151-200 g/m ² (C)	151-200 g/m ² (C)
201-250 kWh/m ² (D)	201-250 kWh/m ² (D)	201-250 g/m ² (D)	201-250 g/m ² (D)
251-300 kWh/m ² (E)	251-300 kWh/m ² (E)	251-300 g/m ² (E)	251-300 g/m ² (E)
301-350 kWh/m ² (F)	301-350 kWh/m ² (F)	301-350 g/m ² (F)	301-350 g/m ² (F)
351-400 kWh/m ² (G)	351-400 kWh/m ² (G)	351-400 g/m ² (G)	351-400 g/m ² (G)
401-450 kWh/m ² (H)	401-450 kWh/m ² (H)	401-450 g/m ² (H)	401-450 g/m ² (H)
451-500 kWh/m ² (I)	451-500 kWh/m ² (I)	451-500 g/m ² (I)	451-500 g/m ² (I)

Chestertons Islington Lettings

327-329 Upper Street
 London
 N1 2XQ
lettings.islington@chestertons.com
 02072264221
[chestertons.com](https://www.chestertons.com)

Pleasant Place, N1

Approx. Gross Internal Area 554 Sq Ft - 51.47 Sq M



First Floor

For Illustration Purposes Only - Not To Scale

This floor plan should be used as a general outline for guidance only and does not constitute in whole or in part an offer or contract. Any intending purchaser or lessee should satisfy themselves by inspection, searches, enquiries and full survey as to the correctness of each statement. Any areas, measurements or distances quoted are approximate and should not be used to value a property or be the basis of any sale or let.