



Albert Road, Bagshot

£1,350 PCM



Albert Road, Bagshot

Modern two bedroom house in a tucked away location within the popular Connaught Park development.

FEATURES

- Easy access to junction 3 of the M3
- Gas central heating
- Walking distance to Bagshot High Street
- Storm porch
- Double glazing

ACCOMODATION

- Entrance hall
- Living room
- Re-fitted kitchen
- Two double bedrooms
- Bathroom

OUTSIDE

- Enclosed rear garden with patio
- Allocated parking space
- Additional residents parking

AVAILABLE

2nd February 2026

FURNISHED/UNFURNISHED

Unfurnished

DEPOSIT PAYABLE

£1,550

COUNCIL TAX

Surrey Heath - Band C

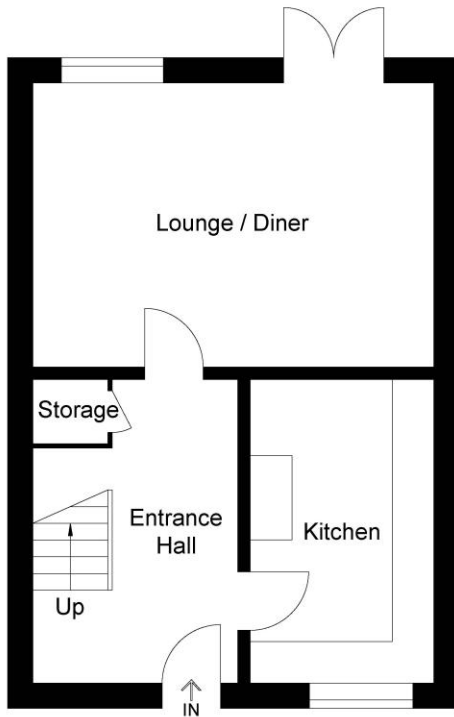
EPC RATING

C

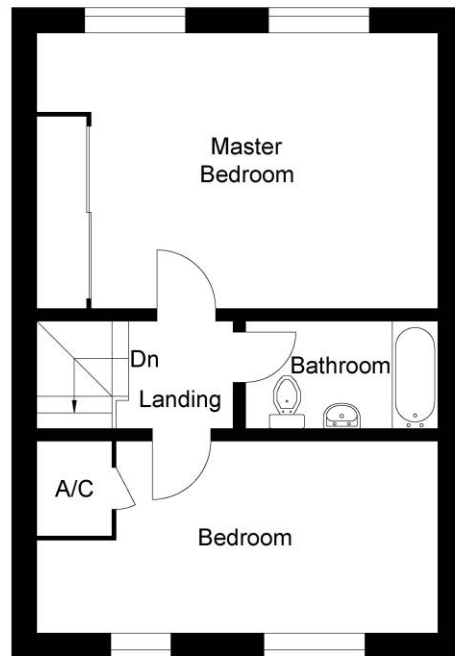




Approximate Gross Internal Area
69.0 sq m / 742.70 sq ft



Ground Floor



First Floor

Illustration for identification purposes only, measurements are approximate, not to scale.

Disclaimer: We wish to inform prospective tenants that we have prepared these sales particulars as a general guide. We have not carried out a detailed survey, nor tested the services, appliances and specific fittings. Room sizes are approximate and rounded: they are taken between internal wall surfaces and therefore include cupboards / shelves, etc. .

Postcode for sat nav: GU19 5QJ



NEWTON ROWE
SALES & LETTINGS

The Old Dairy, 7 Updown Hill, Windlesham, Surrey GU20 6AF
enquiries@newtonrowe.co.uk | 01276 986900