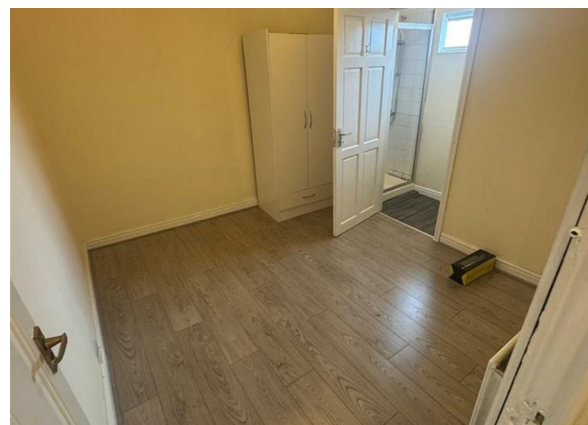
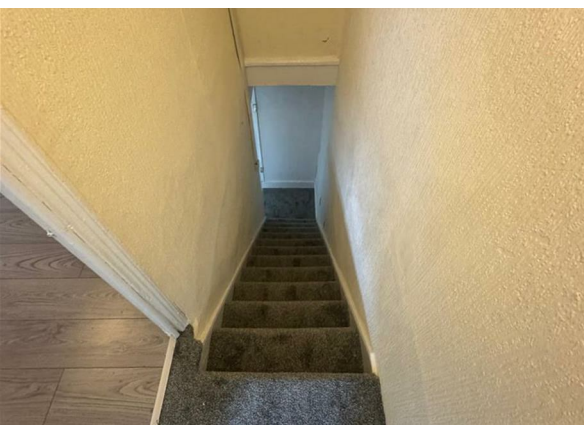
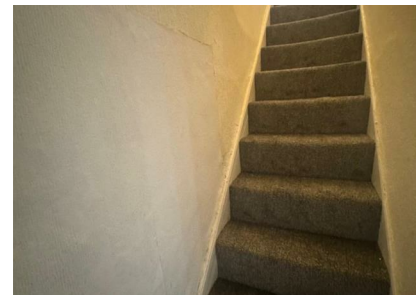


Flat above, Moss Lane, Swinton, M27 9RD

£850 Per Month

Council Tax Band:



1 BEDROOM UNFURNISHED FLAT TO LET IN SWINTON

- RENT £850
- DEPOSIT £850
- 1 BEDROOM, BATHROOM AND RECEPTION
- PRIVATE GARDEN

Nestled in the heart of Swinton on the charming Moss Lane, this delightful flat offers a perfect blend of comfort and convenience. With one well-proportioned bedroom, this property is ideal for individuals or couples seeking a cosy living space. The flat features a welcoming reception room, providing a warm atmosphere for relaxation or entertaining guests.

The bathroom is thoughtfully designed, ensuring both functionality and style. This apartment is perfect for those who appreciate a low-maintenance lifestyle while still enjoying the benefits of a vibrant community.

Moss Lane is well-connected, offering easy access to local amenities, including shops, cafes, and parks, making it an excellent choice for those who value both tranquility and accessibility. Whether you are a first-time buyer or looking to downsize, this flat presents a wonderful opportunity to embrace modern living in a sought-after area.

Contact us today and do not miss the chance to make this charming flat your new home.

Open House Estate Agents
61 Kingsway, Manchester
M19 2LL
0161 225 6926



Open House South East Manchester



Energy Efficiency Rating		
	Current	Potential
Very energy efficient - lower running costs		
(92 plus) A	47	
(81-91) B		
(69-80) C		
(55-68) D		
(39-54) E		
(21-38) F		
(1-20) G		
Not energy efficient - higher running costs		
England & Wales		EU Directive 2002/91/EC 