



# Hodford Road

London, NW11

£11,500 per month  
(£2,653.85 per week)

We are delighted to present this stunning 5-bedroom semi-detached period house located in a sought-after area. This beautifully furnished property boasts a modern interior spread across three floors, offering ample space for comfortable living. The ground floor features a spacious living room, a fully equipped kitchen with wine fridge, and a dining area, perfect for entertaining guests. The first floor comprises four well-appointed bedrooms and a family bathroom, while the upper floor houses the principal bedroom with an en suite, providing plenty of room.

Externally, the property benefits from off-road parking and a charming garden, ideal for enjoying outdoor activities or simply relaxing in the sun. The property further benefits from a fantastic home gym located in the outhouse.

Situated in a convenient location close to town amenities, schools, and transport links, this property offers the perfect blend of comfort and convenience.

**CHESTERTONS**



# Hodford Road

## London, NW11

- Large Family House
- Separate Outhouse
- Rear Garden
- Driveway
- Pet Friendly





**Minimum Term:** 12 months  
**Deposit Required:** £15,923.08  
**Local Authority:** London Borough of Barnet  
**Council Tax Band:** G  
**EPC Rating:** D  
**Furnished**

Score	Energy rating	Current	Potential
92+	A		
81-91	B		
69-80	C		
55-68	D	65 D	80 C
39-54	E		
21-38	F		
1-20	G		

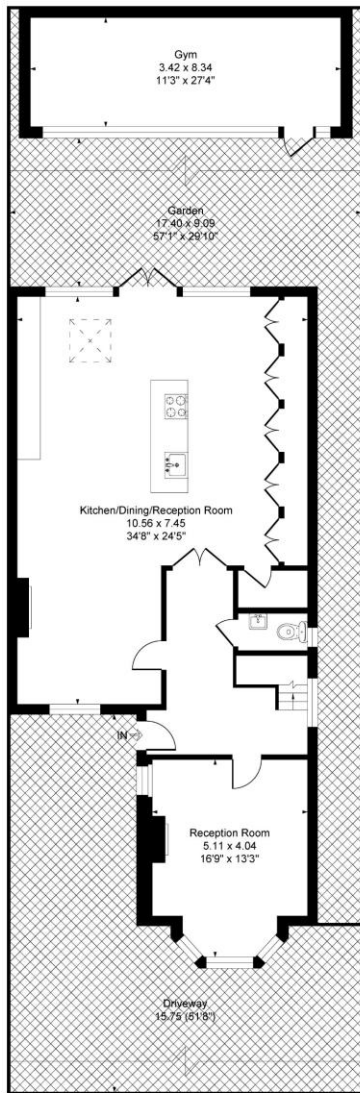
### *Chestertons Hampstead Lettings*

55-56 Hampstead High Street  
 Hampstead  
 London  
 NW3 1QH  
[hampsteadlettingsusers@chestertons.co.uk](mailto:hampsteadlettingsusers@chestertons.co.uk)  
 02077941125  
[chestertons.co.uk](http://chestertons.co.uk)

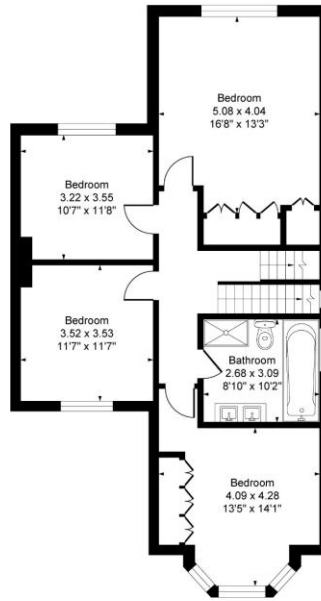
Additional tenant charges apply (fees apply to non-AST tenancies only)  
 Tenancy Agreement Fee: £300  
 References per Tenant/Guarantor: £60  
 Inventory check (approx. £100 – £250 inc. VAT)  
[chestertons.co.uk/property-to-rent/applicable-fees](http://chestertons.co.uk/property-to-rent/applicable-fees)

# Hodford Road, London, NW11

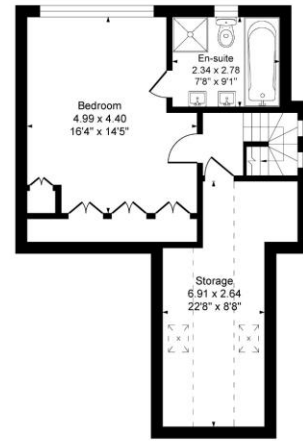
Approximate Gross Internal Floor Area = 269.7 sq m / 2904 sq ft (Included the Gym)



Ground Floor



First Floor



Second Floor

Illustration for identification purposes only, measurements are approximate, not to scale.

Chesterton UK Services Limited trading as Chestertons for themselves and for the vendor of this property whose agents they are, give notice that (i) these particulars do not constitute any part of an offer or contract, (ii) all statements contained within these particulars are made without responsibility on the part of Chestertons or the vendor, (iii) whilst made in good faith, none of the statements contained within these particulars are to be relied upon as a statement or representation of fact, (iv) any intending purchasers must satisfy themselves by inspection or otherwise as to the correctness of each of the statements contained within these particulars, (v) the vendor does not make or give either Chestertons or any person in their employment any authority to make or give representation or warranty whatsoever in relation to this property. Wide angle lenses may be used. ©Copyright Chestertons | Chesterton Global Ltd | Registered Office 40 Connaught Street, Hyde Park, London W2 2AB Registered Company Number 05334580.



This paper is  
100% recyclable