



**Connells**

Little End Grange Lane  
Rushwick Worcester



## Property Description

This four-bedroom detached home is ideally situated on the sought-after Grange Lane in Rushwick, offering spacious and versatile accommodation perfect for family living.

The property benefits from a private driveway and garage, providing ample off-road parking. To the rear, a generously sized garden offers a great space for outdoor entertaining and relaxation.

Internally, the ground floor comprises a welcoming living room, a separate dining room ideal for formal meals, and a well-appointed kitchen with plenty of storage and workspace. A convenient downstairs WC completes the ground floor layout.

Upstairs, the property offers four good-sized bedrooms. The principal bedroom features its own en-suite bathroom, creating a comfortable and private retreat.

This home combines practical living space with a desirable location, making it an excellent choice for families and those looking to upsize.

## Ground Floor

### Entrance Hall

Radiator and carpet flooring.

### W.C

Side facing double glazed window and carpet

flooring.

## Living Area

Front and side facing double glazed window, ceiling light, two radiators, coal fire and carpet flooring.

## Dining Room

Double glazed sliding doors to the rear, ceiling light, radiator and carpet flooring.

## Kitchen

Rear and side facing double glazed windows, strip light, stainless steel sink and drainer unit, part tiled walls, wall and base units, radiator and carpet flooring.

Door to the side conservatory.

## Conservatory

Single glazed throughout.

Door to the rear.

Door to the garage.

## First Floor

### Landing

Radiator, loft access and carpet flooring.

## Bedroom One

Front and side facing double glazed windows, ceiling light, two radiators, fitted wardrobes and carpet flooring.

Rear facing double glazed window, walk in shower and a wash hand basin.

## Bedroom Two

Front facing double glazed window, ceiling light, radiator, fitted wardrobe, hand wash basin and carpet flooring.

## Bedroom Three

Rear facing double glazed window, ceiling light, radiator, fitted wardrobe, hand wash basin and carpet flooring.

## Bedroom Four

Front facing double glazed window, ceiling light, radiator and carpet flooring.

## Bathroom

Rear facing double glazed window, W.C, wash hand basin, bath with shower, wash hand basin, partly tiled walls, radiator and carpet flooring.

## Outside

### Outside Front

To the front of the property is driveway and laid to lawn wrap around garden.

### Outside Rear

To the rear of the property is a laid to lawn garden.

## Double Garage

Two side facing single glazed windows and a single glazed window to the rear.

## Services

All main services are connected to the property.

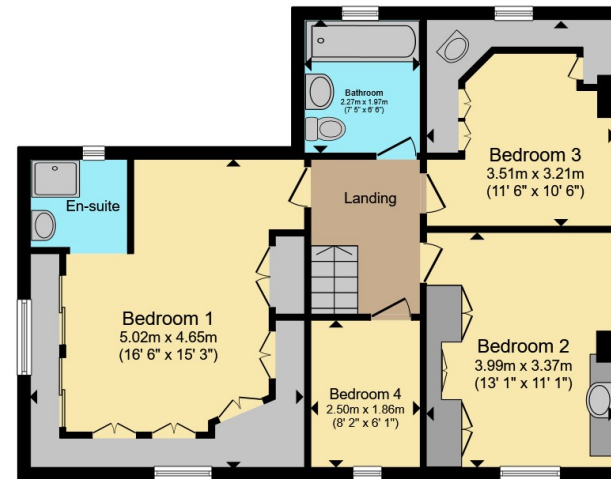








**Ground Floor**



**First Floor**

Total floor area 143.8 m<sup>2</sup> (1,548 sq.ft.) approx

This floor plan is for illustrative purposes only. It is not drawn to scale. Any measurements, floor areas (including any total floor area), openings and orientation are approximate. No details are guaranteed, they cannot be relied upon for any purpose and they do not form part of any agreement. No liability is taken for any error, omission or misstatement. A party must rely upon its own inspection(s). Powered by [www.propertybox.io](http://www.propertybox.io)



To view this property please contact Connells on

**T 01905 611 411**

**E [worcester@connells.co.uk](mailto:worcester@connells.co.uk)**

3 Foregate Street  
WORCESTER WR1 1DB

EPC Rating: Council Tax  
Awaited Band: E

Tenure: Freehold

**view this property online [connells.co.uk/Property/WOR315881](http://connells.co.uk/Property/WOR315881)**



1. MONEY LAUNDERING REGULATIONS Intending purchasers will be asked to produce identification documentation at a later stage and we would ask for your co-operation in order that there will be no delay in agreeing the sale. 2. These particulars do not constitute part or all of an offer or contract. 3. The measurements indicated are supplied for guidance only and as such must be considered incorrect. Potential buyers are advised to recheck measurements before committing to any expense. 4. We have not tested any apparatus, equipment, fixtures, fittings or services and it is in the buyers interest to check the working condition of any appliances.

Connells Residential is registered in England and Wales under company number 1489613, Registered Office is Cumbria House, 16-20 Hockliffe Street, Leighton Buzzard, Bedfordshire, LU7 1GN. VAT Registration Number is 500 2481 05.

**See all our properties at [www.connells.co.uk](http://www.connells.co.uk) | [www.rightmove.co.uk](http://www.rightmove.co.uk) | [www.zoopla.co.uk](http://www.zoopla.co.uk)**

Property Ref: WOR315881 - 0001