



Grove Street, SE8

£375,000

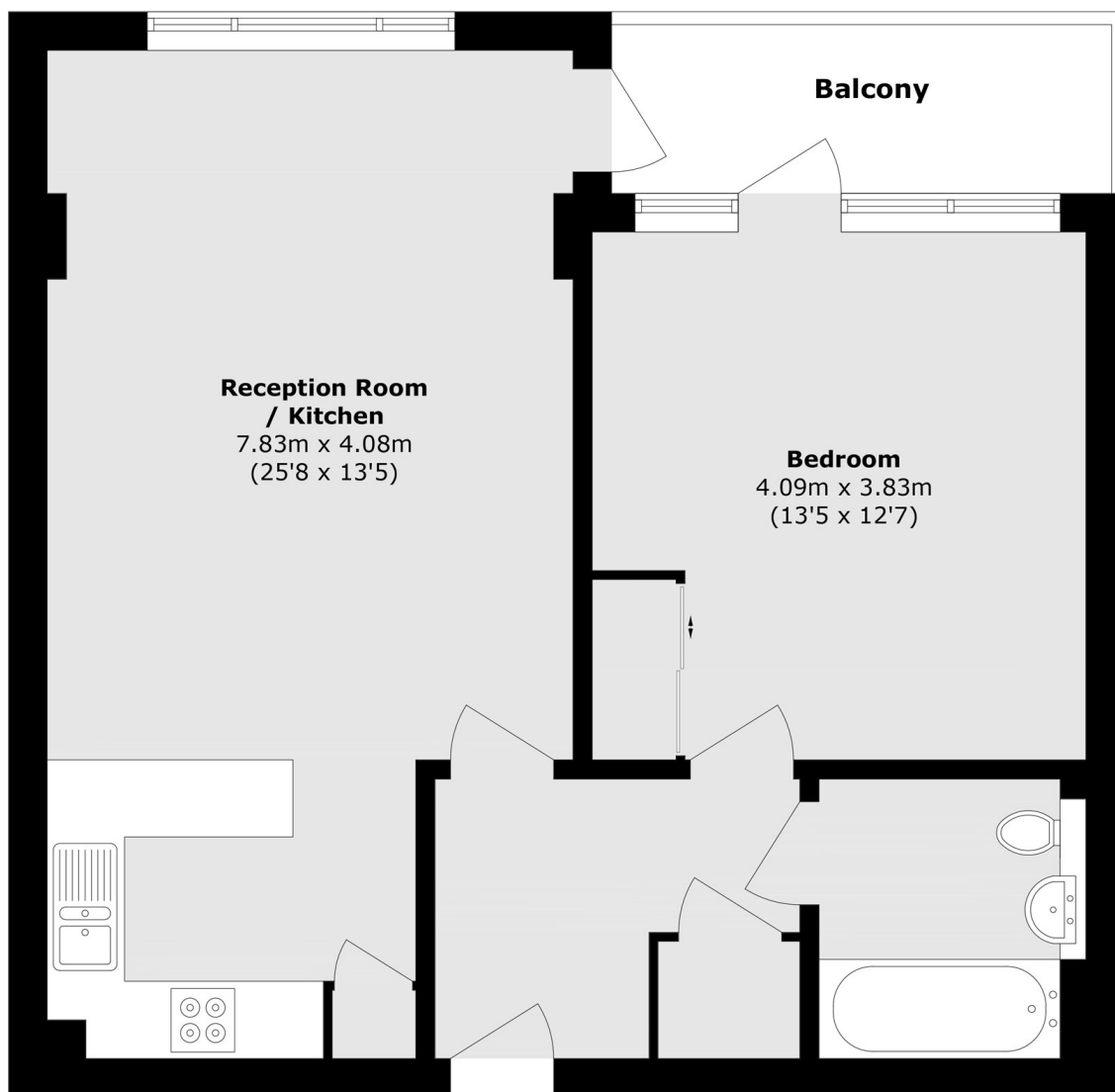
Situated within this sought after development, this light and airy one double bedroom flat is in stunning condition and boasts a spacious open plan kitchen and living area, hardwood floors, large private balcony and concierge facilities.

Aurora Point is only 0.4 miles from Surrey Quays station and 0.8 miles to Canada Water station. Great connectivity via the Greenland Pier using the uber boat. The pier connects directly to major central London locations (such as Westminster and London Eye) A wide range of shops, cafés and restaurants are moments away.

Features

- One Double Bedroom
- Private Balcony
- Stunning Condition
- Concierge Facilities
- Valid EWS1 Form
- Great Location

Grove Street, London, SE8



Total area (approx.): 57.4 sq. m (617.80 sq. ft)

Balcony area (approx.): 6.4 sq. m (68.8 sq. ft)