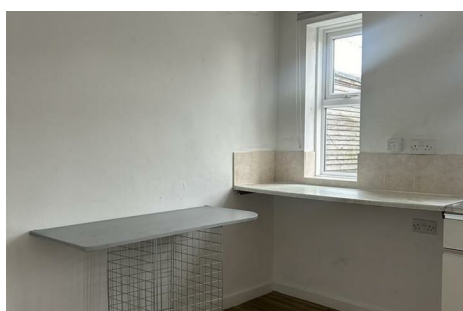




CHAFFERS
ESTATE AGENTS



Flat, Potheary House High Street Gillingham, SP8 4AA

Two Bedroom Top Floor Flat

This two-bedroom top-floor flat is conveniently located in Potheary House on Gillingham High Street, offering easy access to local amenities, shops, and transport links in the heart of this historic North Dorset town.

Property Features:

Two bedrooms

One bathroom

Top floor position

Fully double-glazed throughout

Electric storage heating

Important Information:

£900

Council Tax Band: A

Flat, Potheary House High Street

Gillingham, SP8 4AA



Description

Situated in the centre of Gillingham, Dorset, this spacious two-bedroom flat enjoys a prime high-street location close to shops, cafés, and transport links. The accommodation includes a generous kitchen, a separate utility room, and an additional toilet, making it ideal for convenient modern living



Directions





Floor Plan: Not to scale ~ For identification purposes only.

These particulars, whilst believed to be accurate are set out as a general outline only for guidance and do not constitute any part of an offer or contract. Intending purchasers should not rely on them as statements of representation of fact, but must satisfy themselves by inspection or otherwise as to their accuracy. No person in this firms employment has the authority to make or give any representation or warranty in respect of the property.

48 High Street, Shaftesbury, Dorset, SP7 8AA
Tel: 01747 852301 Email: shaftesbury@chaffersstateagents.co.uk www.chaffersstateagents.co.uk

