



Guide Price
£250,000

Freehold

2x  1x  1x 

**Cheeslands,
Biddenden, Ashford,
Kent, TN27**

OVER 60?

Secure this property
for up to **59% less!**

Wards
Helping you move forwards



Main features

- Mid terraced freehold
- L shape garden
- Quiet cul de sac in Biddenden
- Fantastic opportunity to secure a first home
- Walking distance to the High Street amenities and Primary School

Accommodation

GROUND FLOOR

Entrance Hall
 Kitchen: 11'1 x 8'5 (3.38m x 2.57m)
 Lounge/Diner: 15'5 x 15'4 (4.70m x 4.68m)

FIRST FLOOR

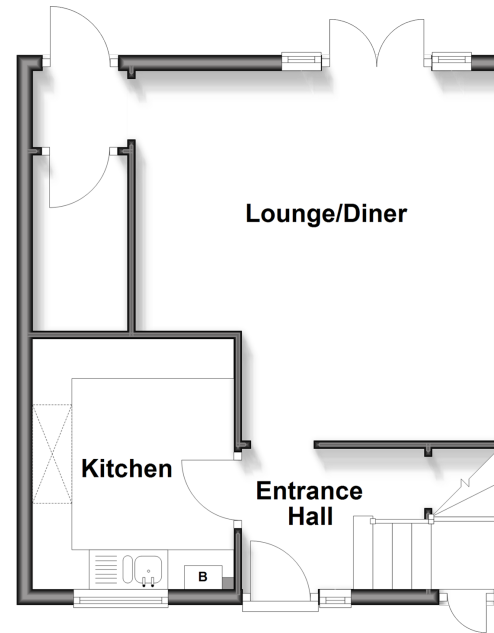
Landing
 Cloakroom
 Bathroom
 Bedroom 1: 12'1 x 8'3 (3.69m x 2.52m)
 Bedroom 2: 12'5 x 10'10 (3.79m x 3.30m)

OUTSIDE

Storage
 Rear Garden

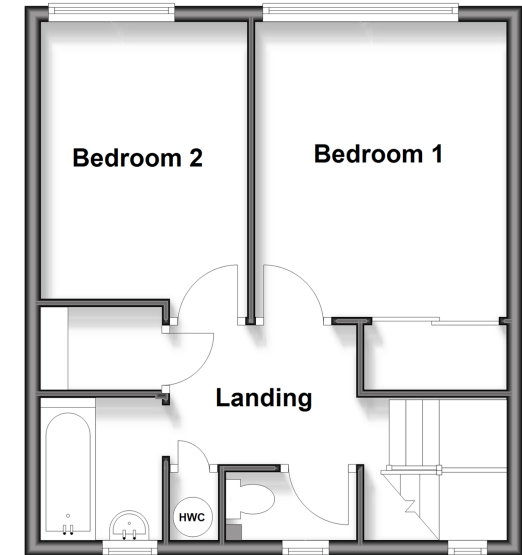
Ground Floor

Approx. 38.8 sq. metres (418.1 sq. feet)



First Floor

Approx. 38.8 sq. metres (418.1 sq. feet)



Call Headcorn - 01622 890435 ■ wardsokent.co.uk

■ If buying to rent, please check if Local Authority licensing schemes apply before proceeding

■ Through a Homewise Home For Life Plan people aged 60+ can secure this property for up to 59% less, by purchasing a Lifetime Lease



12718253/20260511/AJF/AJF