

Latimer Road, SW19

£625,000

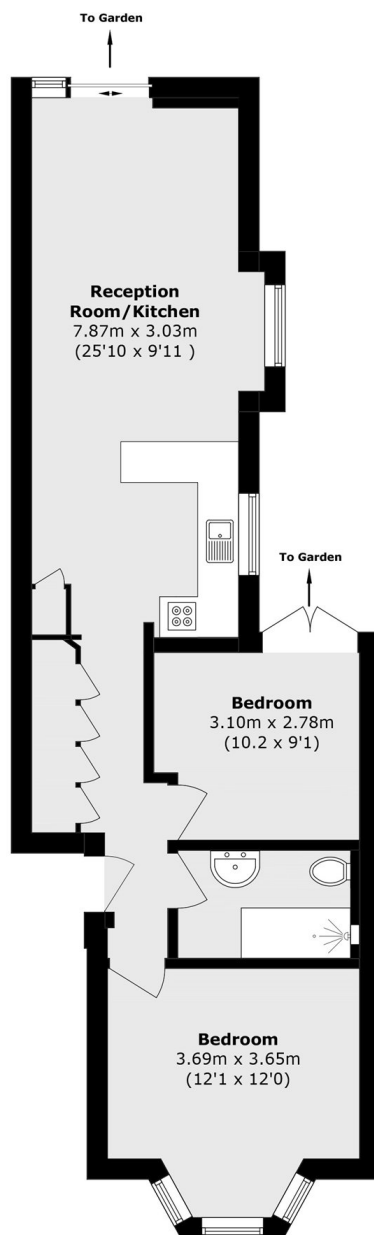
A two double bedroom, ground floor garden flat, located in the centre of Wimbledon. The apartment is finished to a superb standard, with an open kitchen/dining room and direct access to a large landscaped private garden.

Latimer Road is a leafy street located close to the leisure centre, in Wimbledon Town Centre. Located close to Wimbledon Broadway and equidistant to the District, Northern line tube and an eclectic range of shops, bars, restaurants and a theatre.

Features

- Sold With Extended Lease
- Two Double Bedrooms
- Ground Floor
- Victorian Conversion
- Private Rear Garden
- No Onward Chain

Latimer Road, London, SW19



Total area (approx.): 57.0 sq. m (613.5 sq. ft)