



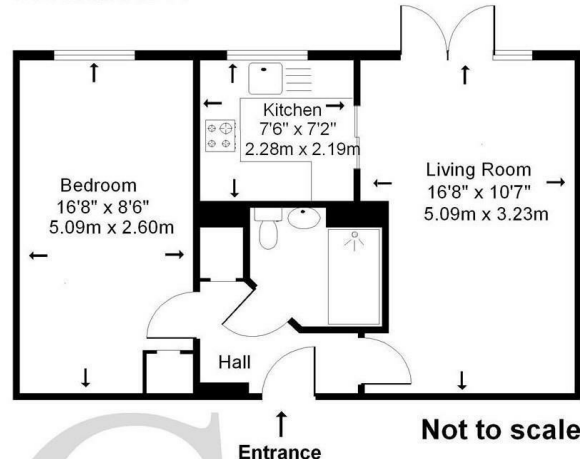
OFFICE  
6, 29-40, 47-50

St Georges Court, St. Georges Road, Addlestone, KT15 2AY



## Guide Price £87,500

Offered to the market with no onward chain is this second floor apartment situated at St Georges Court, an over 55's development within an easy level walk of the town centre and it's amenities. The apartment is well presented with good size bedroom, shower room, kitchen overlooking the main entrance and lovely light living room with juliet balcony and 24 hour careline service. The development benefits from a lodge manager (Mon - Fri), owners lounge, communal gardens and parking for both residents and visitors.



**Approximate Gross Internal Floor Area: 43m sq (465sq ft)**

Whilst every attempt has been made to ensure the accuracy of this floor plan, room sizes and measurements are approximate and accordingly should not be relied upon for carpets and furnishings. These plans are for representation purposes only and no responsibility can be given for errors and omissions.

EPC: 78/78

Leasehold

Grants Homes 155 Station Road, Addlestone, Surrey, KT15 2AT 01932 858885 [addlestone@grantshomes.co.uk](mailto:addlestone@grantshomes.co.uk)