



CORNERSTONE
RESIDENTIAL ESTATE AGENTS

- Spacious Family Home
- Bathroom & Two En-Suites
- Large Kitchen/Diner
- Four Double Bedrooms
- Two Reception Rooms
- Double Garage & Driveway

THE ACCOMMODATION



Entrance Hall

A welcoming hallway with doors to all ground floor accommodation, and stairs off to first floor with a cupboard under.

Cloakroom

Fitted with a WC and vanity wash basin with storage.

Living Room 7.15m x 3.45m (23' 5" x 11' 4")

A generously proportioned living room with a bay window to the front aspect and glazed double doors overlooking and giving access to the rear garden.

Dining Room 4.02m x 3.23m (13' 2" x 10' 7")

Currently used as a bedroom with bay window to front aspect.

Kitchen/Diner 6.91m x 4.61m (22' 8" x 15' 1")

Fitted with a range of kitchen cabinets with integrated dishwasher, double sink unit, island unit, plumbing for washing machine, doors to the rear garden.

Gallery Landing With airing cupboard housing hot water cylinder, doors to...

Bedroom One & En-Suite Shower Room 4.62m x 3.79m (15' 2" x 12' 5")

A large principal bedroom with two built-in double wardrobes and door to the En-Suite which has a large shower enclosure, wc and circular wash basin with cupboard under.

Bedroom Two & En-Suite Shower Room 3.21m x 2.77m (10' 6" x 9' 1")

With window to front aspect, built-in double wardrobe and door to a second En-Suite with large shower enclosure, wc and wash basin.

Bedroom Three 3.59m x 3.28m (11' 9" x 10' 9")

With built-in double wardrobe and window to front aspect.

Bedroom Four 2.99m x 2.91m (9' 10" x 9' 7")

With built-in double wardrobe and window overlooking the rear garden.

Family Bathroom Fitted with a shower enclosure, WC, vanity wash basin and panelled bath with shower-mixer taps.

Outside

The property is approached over a shared driveway and at the front has two planting beds laid to slate. There are two parking spaces in front of a double garage which has power and light connected. The rear garden is a good size for a modern house and mainly laid to grass - wraps around the side and rear of the house. There is a storage shed and patio area.

Section 21 of the Estate Agency Act Disclosure

The vendors of this property are directors of Cornerstone Residential Estate Agents Ltd.



THE PROPERTY & LOCATION

A spacious and well-presented detached home within a cul-de-sac set away from the road. The property offers a generous wraparound garden, four double bedrooms with two en-suites and a family bathroom and planning permission granted for further extension.

Situated on the popular Rendlesham development some 6 miles from Woodbridge with Aldeburgh and the Heritage Coast in the other direction, the Village has grown and matured with a great sense of community. The centre has a convenience store, vets, hairdressers, bar and there are numerous play areas, plus a primary school rated Good by Ofsted and a doctors surgery and NHS dental practice.

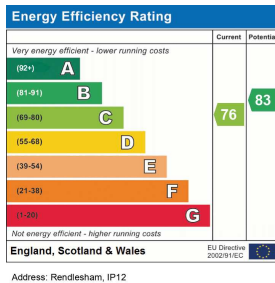
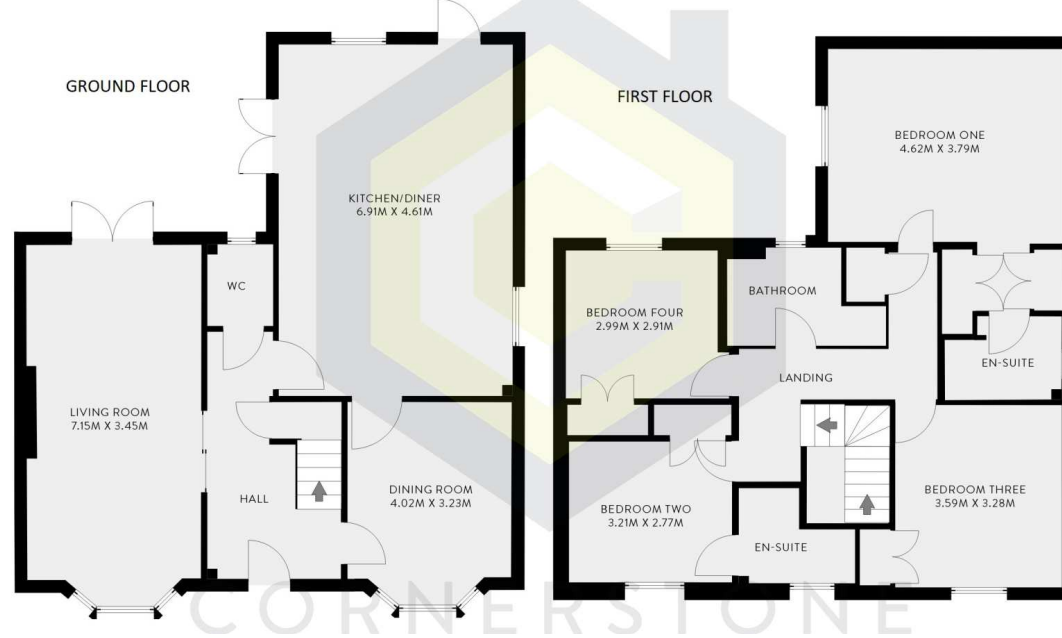
Planning permission was previously granted for a single-storey extension comprising a utility room, bathroom and lounge with a mezzanine bedroom area. Full details can be found here;

<https://publicaccess.eastsuffolk.gov.uk/online-applications/applicationDetails.do?keyVal=QU4SQQQX07400&activeTab=summary>



TO ARRANGE A VIEWING OF THIS PROPERTY OR
TO SEE HOW WE CAN HELP YOU MOVE CALL US ON 01394 547000

While we try to be as accurate as possible with our floorplans, they are intended as a guide only and therefore should not be relied upon



Council Tax Banding : E

We understand from our vendor that the property is connected to a mains gas supply, electricity, water and drainage.

Please visit Ofcom - to view the mobile and network coverage



42 MARKET HILL, WOODBRIDGE, SUFFOLK, IP12 4LU
 T:01394 547000 E:WOODBRIDGE@CR-EA.CO.UK W:CR-EA.CO.UK
 CORNERSTONE RESIDENTIAL LTD IS A REGISTERED COMPANY IN ENGLAND & WALES
 REGISTERED NUMBER: 9421778
 REGISTERED OFFICE: 42 MARKET HILL, WOODBRIDGE, IP12 4LU

Disclaimer

Whilst every care has been taken in the preparation of these particulars, and they are believed to be correct, they are not warranted and intending purchasers/lessees should satisfy themselves as to the correctness of the information given