



The Limes, Delaunays Road, Manchester, M8

£110,000

2 1



PUBLIC NOTICE 14 DAYS

We advise that an offer has been made for the above property in the sum of £110,000.

Any persons wishing to increase on this offer should notify Henry Wiltshire of their best offer prior to exchange of contracts.

Please note, new offers can be submitted and accepted up until exchange of contracts has taken place.



A TOP FLOOR, TWO BED apartment in The Limes, Crumpsall which is ideally located close to North Manchester General

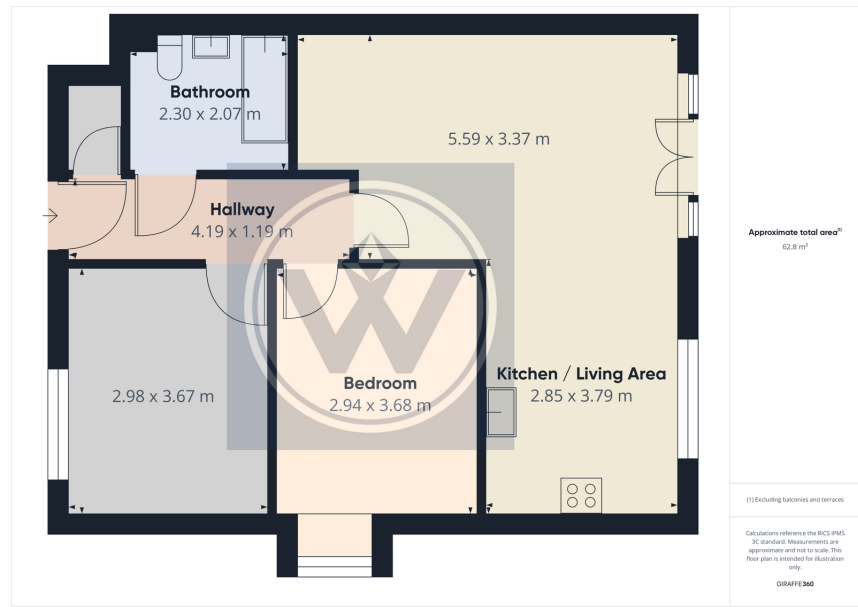


Floor Area
sq. ft.

Tenure
Leasehold

Service Charge
£0 per annum

Ground Rent
£200 per annum



Energy Efficiency Rating

	Current	Potential
<i>Very energy efficient - lower running costs</i>		
(92 plus) A		
(81-91) B		
(69-80) C	79	79
(55-68) D		
(39-54) E		
(21-38) F		
(1-20) G		
<i>Not energy efficient - higher running costs</i>		
England & Wales	EU Directive 2002/91/EC	

UK Offices | Canary Wharf - E14 Nine Elms - SE1 Royal Docks - E16 Bow - E3 Hayes, Middlesex - UB3 Manchester - M2

International Offices | Dublin Abu Dhabi Hong Kong Singapore

