





Situated in the highly desirable waterside village of Langstone, this spacious top floor apartment enjoys far-reaching views and a peaceful setting within the well-regarded Longmead Court development. Offered with no forward chain and the benefit of a lift serving all floors, the property presents an excellent opportunity for those seeking low-maintenance living in a sought-after coastal location. Bright and well-proportioned throughout, the apartment extends to approximately 997 sq.ft and benefits from two allocated parking spaces and an external storage shed.

The accommodation is accessed via a welcoming reception hall with useful storage cupboards. The heart of the home is the impressive dual-aspect living and dining room, a generous space flooded with natural light and enjoying attractive views across the surrounding area. Patio doors open onto a private balcony, providing the perfect spot to relax and enjoy the outlook. The separate fitted kitchen offers a range of wall and base units, integrated appliances and ample space for everyday dining and entertaining. There are three well-proportioned bedrooms, including a spacious principal bedroom with an extensive range of fitted wardrobes. Bedroom two also benefits from fitted wardrobes, while the third bedroom offers flexibility as a guest room, home office or hobby room. The modern shower room is complemented by the added convenience of a separate cloakroom/WC.

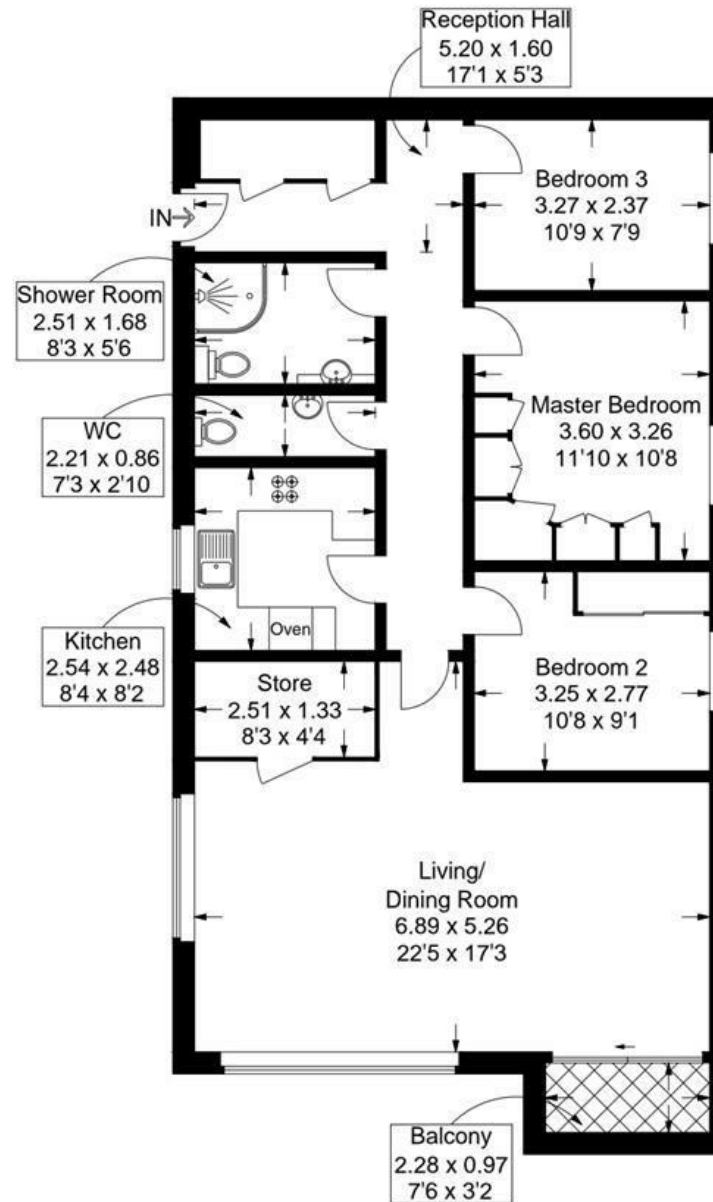
Externally, residents enjoy well-maintained communal areas, lift access and two allocated parking spaces. The property is offered with a peppercorn ground rent, a service charge of approximately £170 per calendar month and a long lease with approximately 217 years remaining. Positioned within easy reach of Langstone Harbour, local amenities and excellent transport links, this is a superb apartment in an enviable location.

- NO FORWARD CHAIN
- TOP FLOOR APARTMENT
- LIFT TO ALL FLOORS
- THREE BEDROOMS
- PRIVATE BALCONY
- 217 YEAR LEASE
- TWO ALLOCATED PARKING SPACES
- EXTERNAL STORAGE SHED
- SPACIOUS LIVING ROOM
- SOUGHT AFTER LANGSTONE



Longmead Court, Langstone Road, Langstone

Approximate Gross Internal Area = 92.7 sq m / 997 sq ft



This plan is for layout guidance only. Not drawn to scale unless stated. Windows and door openings are approximate. Whilst every care is taken in the preparation of this plan, please check all dimensions, shapes and compass bearings before making any decisions reliant upon them.