

GOLDSMITH ROAD, WALTHAMSTOW

£2,750 Per Calendar Month
 4 Bed House



Features:

- 4 Bedrooms
- 2 Bathrooms
- Available Now
- Part Furnished
- Well Maintained Throughout
- Modern Bathroom
- Council Tax Band C
- Walking Distance To Blackhorse Road station
- Close To Lloyd Park
- EPC Rating D

Arranged over three floors, this spacious four-bedroom, two bathroom home is located in an excellent spot on a residential street, but still close to all the lively action around Walthamstow and Blackhorse Road.

Not only are there many fantastic amenities in the direct neighbourhood, Blackhorse Road station is only a short walk away for access to the Victoria line and Suffragette Overground. Buses are also plentiful, so it's a brilliant base for anyone wanting to enjoy all the perks of London.

REQUEST A VIEWING
 0203 397 9797

E11, E7, E12 & E15
 hello11@stowbrothers.com
 0203 397 2222

E4 & N17
 hello4@stowbrothers.com
 0203 369 6444

E17 & E10
 hello17@stowbrothers.com
 0203 397 9797

E18 & IG8
 hello18@stowbrothers.com
 0203 369 1818

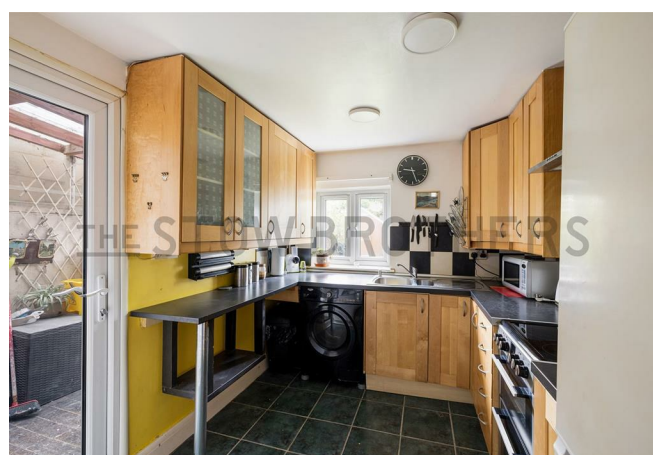
E8, E9, E5, N16, E3 & E2
 hellohackney@stowbrothers.com
 0208 520 3077

New Homes
 newhomes@stowbrothers.com
 0203 325 7227

Investment & Development
 id@stowbrothers.com
 0208 520 6220

Property Maintenance
 propertymanagement@stowbrothers.com
 0203 325 7228

STOWBROTHERS.COM
 @STOWBROTHERS



IF YOU LIVE HERE...

Since the property is arranged over three floors, you'll love the sheer sense of space and way it offers the chance to spread out.

Thanks to the of generous windows, the home has plenty of natural light. The large dual aspect reception room has neutral decor and smart flooring, while the kitchen and adjoining lean-to are bursting with light.

Here you can access your lovely rear garden, perfectly secluded thanks to the rich array of mature foliage.

On the first floor, the two bedrooms are a good size with plenty of natural light, and the well-placed family-sized bathroom is also spacious. The further two rooms in the loft are just as smart, as is the shower room on this level.

As for the area, not only is this part of E17 a hub for coffee shops, bars and eateries, there's an abundance of green space; both Lloyd Park and Higham Hill Park are a short stroll away.

Within a short walk, you've got much the much-lauded vegan-friendly restaurant Slow Burn, the community-centred bouldering studio Yonder, new community saunas and so much more. You're also a short hop from the Blackhorse Beer Mile, where you'll find some of East London's most exciting craft beer breweries, bars and street food.

The area is constantly evolving an attracting new ventures, so you'll love uncovering new gems as you explore this wonderful neighbourhood.



WHAT ELSE?

- Parents will be pleased to learn there's an abundance of primary and secondary schools in the area.
- You've got countless more amenities on your doorstep, including Europe's longest market which runs along the High Street, plus the convenient chains found in the 17&Central shopping centre - all a short stroll away in Walthamstow Central.
- You'll also benefit from being just a short hop from the Soho Theatre Walthamstow, a major cultural landmark brought to life with a £30 million investment as part of the council's London Borough of Culture 2019 initiative to put arts and culture at the heart of the community.

REQUEST A VIEWING
0203 397 9797

FOLLOW US → @STOWBROTHERS
STOWBROTHERS.COM