



15 Stavanger Close

Corby, NN18 9HT



Simpson West

Located within the popular Danesholme area is this well presented THREE bedroom semi detached residence that is being offered to the market for sale. The property occupies a pleasant position within a quiet cul-de-sac and is within walking distance to the local school, shops and other amenities. Features include an entrance hall, living room with bay window, a separate dining room with doors leading to the rear garden and a modern fitted kitchen. To the first floor there are two large double bedrooms, a good single bedroom and the main family bathroom. To the rear is a large garden that is south facing, this is low maintenance with multiple seating areas and is fully enclosed. There is a single detached garage with off road parking for multiple vehicles. Early viewings are highly encouraged. Energy rating C. Council Tax Band B.

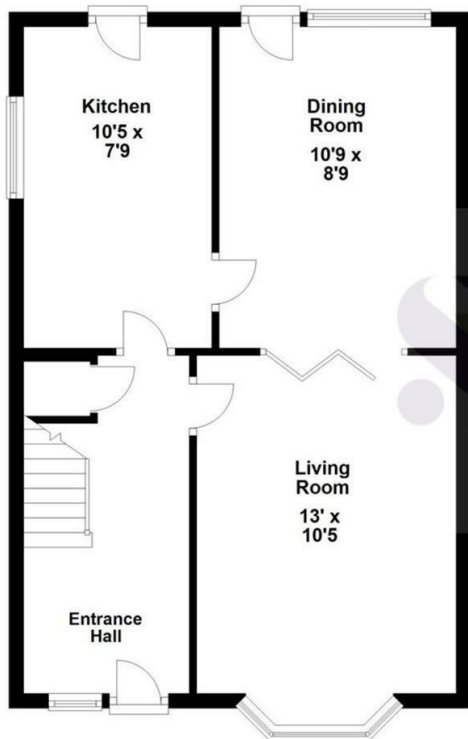


£220,000

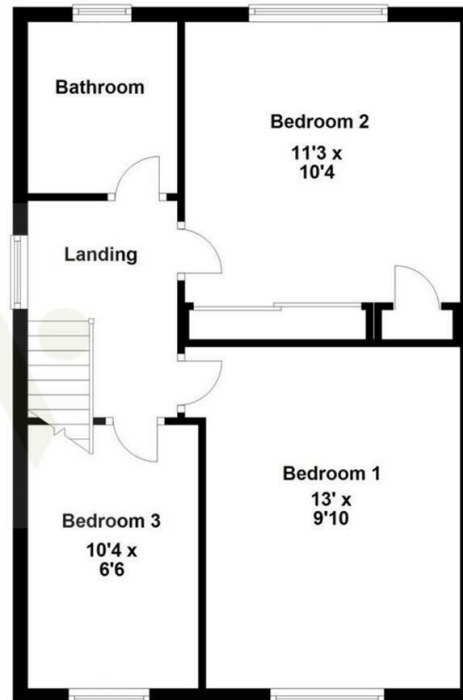
3 1 1



Ground Floor



First Floor



Floor plan not to scale - for guidance purposes only.
Plan produced using PlanUp.



Energy Efficiency Rating

	Current	Potential
<i>Very energy efficient - lower running costs</i>		
(92 plus) A		90
(81-91) B		
(69-80) C	74	
(55-68) D		
(39-54) E		
(21-38) F		
(1-20) G		
<i>Not energy efficient - higher running costs</i>		
England & Wales	EU Directive 2002/91/EC	



When you buy with Simpson West, you know **you'll be in safe hands**. From the moment you walk through our doors, we'll make you **feel truly welcome**. Our sales consultants and financial advisors will take you through **every step of the process**, offering **free expert advice** along the way, from help choosing the right mortgage and insurance through to finding your conveyancer. And if you need help selling your home too, **with over 20 years of local experience, you can trust us to get you moving**.



**Simpson
West**

Making Every
Journey Personal



01536 202007

info@simpsonwest.co.uk

<https://www.simpsonwest.co.uk/>

64 Corporation Street, Corby, Northants, NN17 1NH