



## Palewell Park, SW14

£6,000 Per calendar month

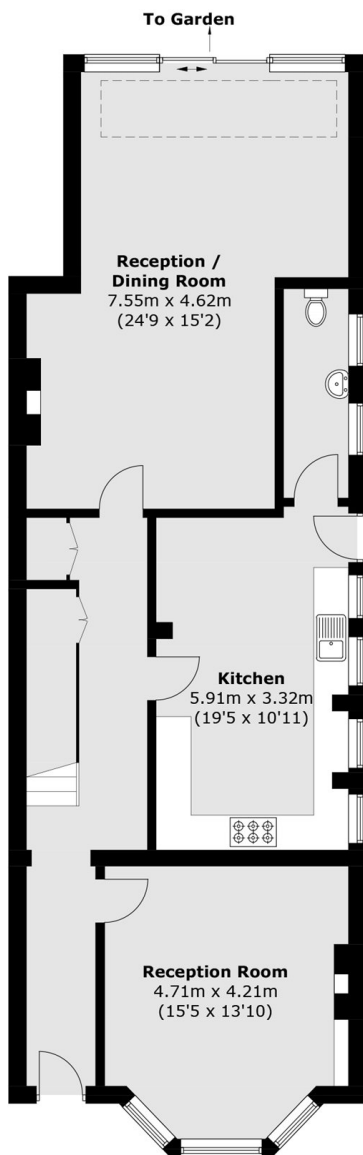
This six bedroom family home has been beautifully and tastefully decorated throughout, with a great balance of period and modern features. With a modern kitchen and bi-fold doors onto the 100ft garden.

Located in the centre of East Sheen, Palewell Park provides easy access to an array of shops, cafes and excellent transport with bus routes into Putney, Hammersmith & Richmond.

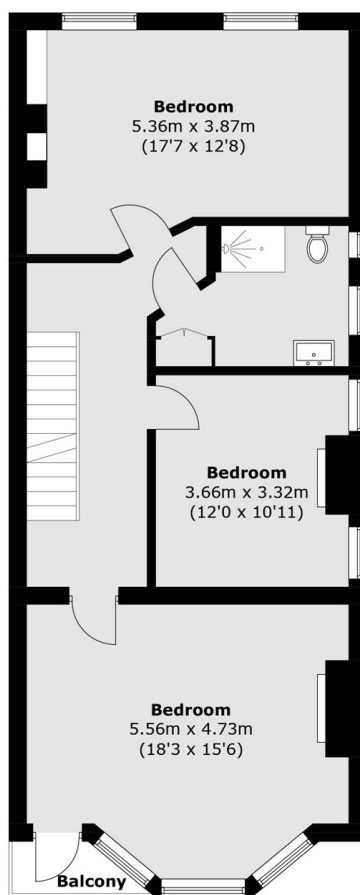
### Features

- Six Bedrooms
- Two Bathrooms
- 100ft garden
- Bi Folding Doors
- Large Kitchen
- Modern and Stylish

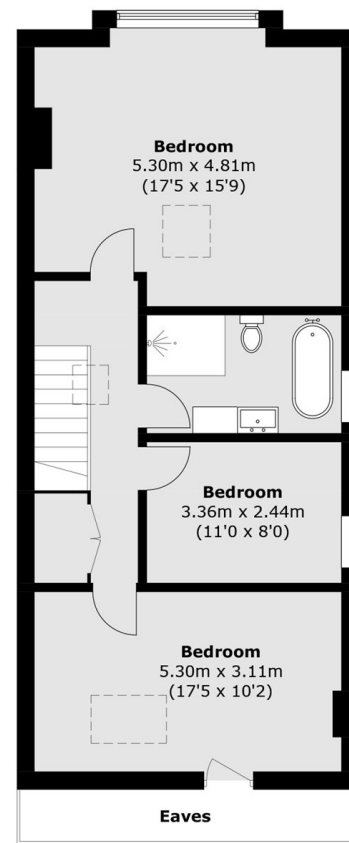
# Palewell Park, London, SW14



**Ground Floor**



**First Floor**



**Second Floor**

Total area (approx.): 242.7 sq. m (2,612.3 sq. ft)  
(Excluding Eaves)  
Balcony : 1.7 sq. m (18.3 sq. ft)