

CREMER STREET, HOXTON, E2

Red.



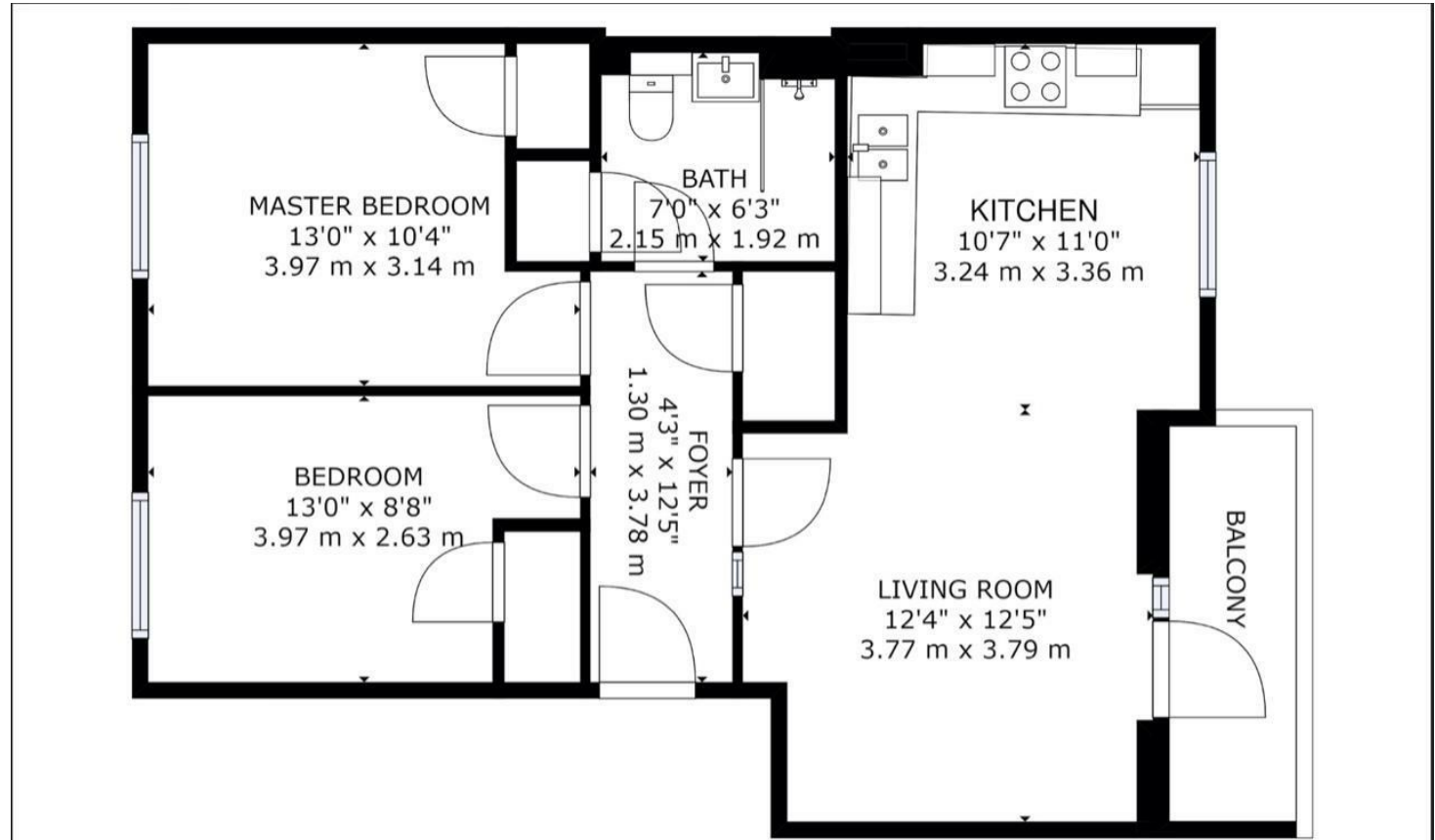
£2,700 PER MONTH

A beautifully presented two double bedroom apartment set within a secure gated development in the heart of Hoxton, just moments from Hoxton Station.

The property offers a bright and spacious open-plan reception and dining area, leading onto a private balcony, ideal for both relaxing and entertaining. There is a modern fitted kitchen, a contemporary bathroom, and two well-proportioned double bedrooms, both benefiting from excellent storage.

Further benefits include a secure entry phone system and the property is offered furnished.

Ideally positioned approximately one minute from Hoxton Station, the apartment also provides easy access to Shoreditch, Old Street, and the City, all within walking distance. A vibrant selection of popular bars, restaurants, cafés, and local amenities are right on your doorstep.



GROSS INTERNAL AREA

TOTAL: 639 sq ft, 59 m²

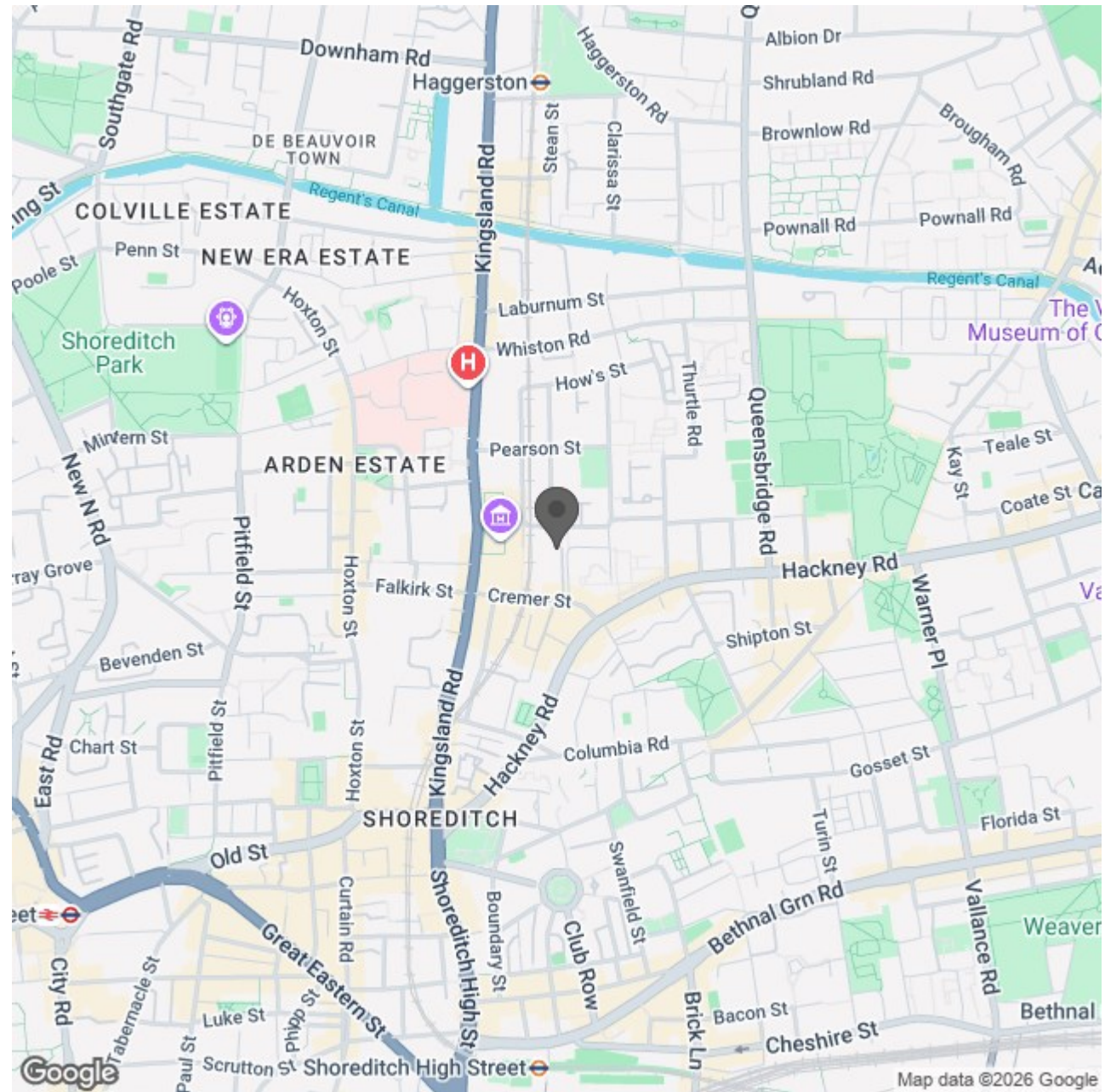
SIZES AND DIMENSIONS ARE APPROXIMATE, ACTUAL MAY VARY.

- Two double bedrooms
- Secure gated development
- Entry phone system
- One minute from Hoxton Station
- Close to local amenities, bars & restaurants
- Bright open-plan reception and dining area
- Offered furnished
- Balcony
- Walking distance to Shoreditch & Old Street



Energy Efficiency Rating		Current	Potential
Very energy efficient - lower running costs			
(92 plus) A			
(81-91) B			
(69-80) C		77	78
(55-68) D			
(39-54) E			
(21-38) F			
(1-20) G			
Not energy efficient - higher running costs			
England & Wales	EU Directive 2002/91/EC		

Environmental Impact (CO ₂) Rating		Current	Potential
Very environmentally friendly - lower CO ₂ emissions			
(92 plus) A			
(81-91) B			
(69-80) C			
(55-68) D		62	63
(39-54) E			
(21-38) F			
(1-20) G			
Not environmentally friendly - higher CO ₂ emissions			
England & Wales	EU Directive 2002/91/EC		



Red.