



Strawberry Fields | Great Brickhill | Milton Keynes | MK17 9FF

Asking Price £800,000

# Strawberry Fields | Great Brickhill

## Milton Keynes | MK17 9FF

### Asking Price £800,000

An exceptional opportunity to acquire a beautifully presented recently extended family home within the exclusive gated Strawberry Fields development with just six houses. Offering spacious and stylish accommodation throughout, this impressive property combines modern open-plan living with elegant finishes, creating a home perfectly suited for both everyday family life and entertaining. With attractive surroundings backing onto a local golf course, excellent schooling nearby and convenient transport links, this home delivers the perfect balance of comfort, practicality and contemporary living. The accommodation includes four generous bedrooms, three bathrooms, an impressive open plan living space with large kitchen, dining room and garden room with bi-folding doors opening to the garden, a separate living room with log burner, utility room and WC. Benefitting from driveway parking as well as a garage.

- Exclusive gated development of just six houses only ten years old.
- Impressive open plan kitchen dining family room.
- Energy efficient home using air source heat pump heating.
- Four generous double bedrooms.
- Stunning uninterrupted views over the local golf course.
- Extended living accommodation to create a stunning orangery.
- Two en-suite bedroom suites and a large balcony to two bedrooms.
- A short drive from Leighton Buzzard and Milton Keynes for schools, amenities and the train station with direct links to London Euston.

#### Welcome to Strawberry Fields

Situated within an exclusive gated development of just six homes in the sought-after village of Great Brickhill, this impressive home occupies a generous corner plot overlooking the Three Locks Golf Course. The development is approached via secure electric gates, leading to beautifully maintained communal grounds and landscaped surroundings that create an immediate sense of privacy and quality. The property itself enjoys an attractive frontage with a blend of traditional brick and timber-clad elevations, complemented by well-tended planting, pathway access and allocated parking, all set against the backdrop of the open golf course beyond.

#### Entrance Hall

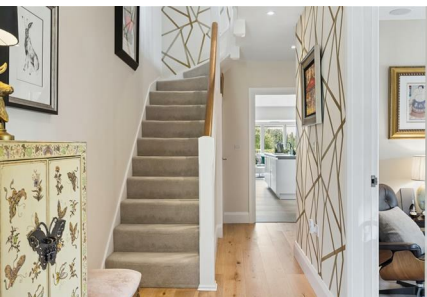
The entrance hall creates an excellent first impression, featuring oak flooring and a turned staircase rising to the first floor. Well presented and generously proportioned, the space provides access to the principal ground floor rooms.

#### Living Room

16'2" x 15'2" (4.93 x 4.64)

The living room is a well-proportioned and inviting space, finished in neutral tones with a feature brick fireplace and wood-burning stove creating a natural focal point. French doors open directly onto the garden, allowing plenty of natural light and providing an attractive outlook. Thoughtfully arranged with ample seating space, the room offers a comfortable setting for everyday living and entertaining.





#### Downstairs Cloakroom

A downstairs cloakroom, fitted to a high specification with a WC and wash hand basin, is conveniently located just off the entrance hall.

#### Kitchen/Dining Room/Orangery

36'4" x 22'5" (11.09 x 6.85)

The impressive open-plan kitchen/dining/orangery forms the heart of the home, offering an exceptional space for everyday family living and entertaining. Beautifully designed with contemporary fitted cabinetry, extensive work surfaces and a substantial central island with breakfast seating. A comprehensive range of integrated appliances is included, while large format tiled flooring with underfloor heating runs throughout the space. The dining area sits comfortably alongside the kitchen, enjoying direct access and views onto the garden through French doors.

Flowing seamlessly from the kitchen is the striking recently built orangery, flooded with natural light from a large glazed roof lantern and full-height glazing overlooking the garden. Bi-folding doors open on two sides in order to make the garden become an extension of the living accommodation. This additional reception area creates a superb informal living space, ideal for relaxing or entertaining guests. The entire arrangement has been thoughtfully designed to provide a versatile layout with a strong connection to the outside space.

#### Utility Room

The utility room is fitted with a range of storage units and work surfaces, together with a sink and drainer. There is plumbing and space for both a washing machine and tumble dryer, making it a practical and well-equipped laundry area.

#### Landing

The first floor landing is well presented, centred around a turned staircase with painted balustrades and oak handrails. A feature geometric wall finish adds character, while the spacious layout provides access to the principal first floor bedrooms and family bathroom.

#### Principal Bedroom

11'11" x 11'3" (3.65 x 3.45)

The principal bedroom is a beautifully presented principal suite enjoying elevated views across The Three Locks Golf Course through glazed bi-fold doors that provide access to a balcony. The room is spacious, finished in a neutral palette, with built-in wardrobes and ample space for freestanding furniture.

#### Ensuite

The accompanying en suite is stylishly appointed with contemporary fittings, comprising a large walk-in shower with glazed screen, WC and vanity wash hand basin with storage beneath. Modern tiling and sleek finishes complete the space.

#### Balcony

A superb wraparound balcony terrace enjoys stunning panoramic views across The Three Locks Golf Course and surrounding countryside, providing an exceptional space for outdoor seating. Accessed directly from both bedroom one and bedroom three via glazed doors, the balcony offers a peaceful and private setting to enjoy the picturesque outlook, with contemporary glazed balustrades enhancing the open feel and uninterrupted views.

#### Bedroom Suite Two

21'5" x 14'2" (6.55 x 4.34)

Bedroom suite two occupies the second floor with panoramic views over the surrounding countryside and golf course, via a large window. The space features vaulted ceilings, fitted eaves storage, wardrobe space and an en-suite shower room.

#### Ensuite

The bedroom benefits from its own modern en suite shower room, fitted with a walk-in shower enclosure, low level WC and wash hand basin.

#### Bedroom Three

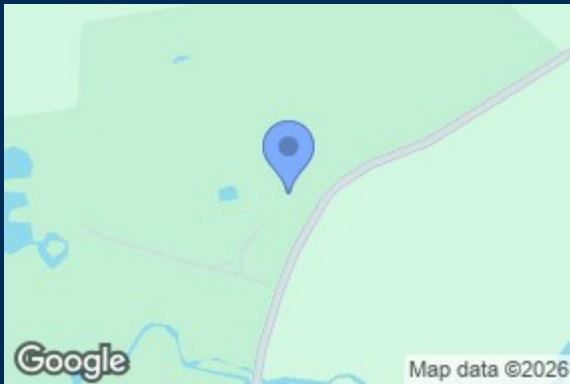
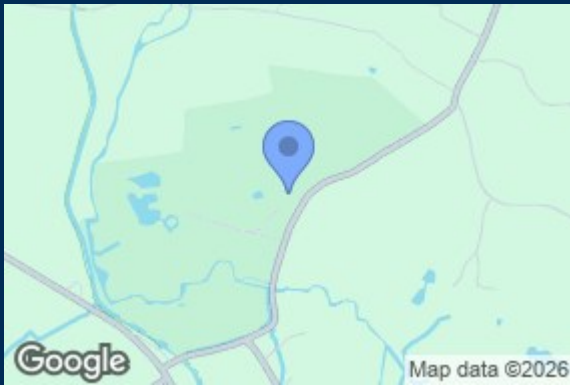
15'3" x 9'4" (4.67 x 2.85)

Bedroom Three is a beautifully presented double bedroom enjoying direct access onto the impressive wraparound balcony through glazed double doors, allowing plenty of natural light to flood the room while taking full advantage of the stunning elevated views across the golf course and surrounding countryside. There is ample space for freestanding furniture.

#### Bedroom Four

11'5" x 8'3" (3.48 x 2.53)

Bedroom Four is a versatile and well-presented room currently utilised as a home office, offering an ideal space for remote working.



Approximate Gross Internal Area  
 Ground Floor = 110.9 sq m / 1,194 sq ft  
 First Floor = 57.2 sq m / 616 sq ft  
 Second Floor = 31.1 sq m / 335 sq ft  
 Garage = 22.1 sq m / 238 sq ft  
 Total = 221.3 sq m / 2,383 sq ft



Illustration for identification purposes only,  
 measurements are approximate, not to scale.  
 © CJ Property Marketing

Energy Efficiency Rating		Environmental Impact (CO <sub>2</sub> ) Rating	
Current	Potential	Current	Potential
	75	78	
<p>Very energy efficient - lower running costs</p> <p>(92-100) <b>A</b></p> <p>(81-91) <b>B</b></p> <p>(69-80) <b>C</b></p> <p>(55-68) <b>D</b></p> <p>(39-54) <b>E</b></p> <p>(21-38) <b>F</b></p> <p>(1-20) <b>G</b></p> <p>Not energy efficient - higher running costs</p>	EU Directive 2002/91/EC	<p>Very environmentally friendly - lower CO<sub>2</sub> emissions</p> <p>(92-100) <b>A</b></p> <p>(81-91) <b>B</b></p> <p>(69-80) <b>C</b></p> <p>(55-68) <b>D</b></p> <p>(39-54) <b>E</b></p> <p>(21-38) <b>F</b></p> <p>(1-20) <b>G</b></p> <p>Not environmentally friendly - higher CO<sub>2</sub> emissions</p>	EU Directive 2002/91/EC
England & Wales		England & Wales	

Duck End  
 Great Brickhill  
 Buckinghamshire  
 MK17 9AP  
 01525 261100  
 enquiries@finehomesproperty.co.uk