



**Guide Price**  
**£150,000**

**Leasehold**

1x  1x  1x 

**Mentmore Road,  
Ramsgate, Kent, CT12**

**OVER 60?**

Secure this property  
for up to **59% less!**

*Wards*  
Helping you move forwards



## Main features

- Spacious first floor apartment
- Located in a cul-de-sac
- Ample parking within the close
- Situated close to Westwood Cross shopping centre
- Spacious lounge with room for a dining table

## Accommodation

### FIRST FLOOR

Entrance Hallway

Lounge : 15'3 x 11'1 (4.65m x 3.38m)

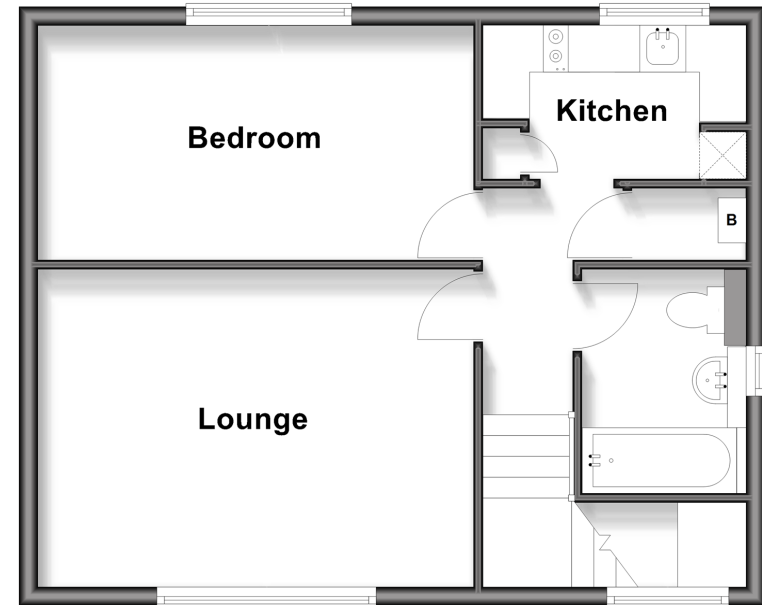
Bedroom : 15'3 x 8'1 (4.65m x 2.47m)

Kitchen : 8'7 x 5'3 (2.62m x 1.60m)

Bathroom

### First Floor

Approx. 45.6 sq. metres (490.8 sq. feet)



Call Ramsgate - 01843 580314 ■ [wardsokent.co.uk](http://wardsokent.co.uk)

■ Legal advice should be taken to verify fixtures/fittings, planning, alterations and/or lease details  
 ■ Through a Homewise Home For Life Plan people aged 60+ can secure this property for up to 50% less, by purchasing a Lifetime Lease

■ Appliances & services are untested, dimensions are approximate and floor plans are not to scale



11435088/20251203/DL/ATN