

A modern living room with a dark brown sofa adorned with patterned cushions. In front of the sofa is a glass coffee table with metal legs. To the right, a large window with horizontal blinds looks out onto a green landscape. A white radiator is positioned below the window. In the background, a dining area with a table and chairs is visible through an open doorway. The room is lit by two cylindrical pendant lights hanging from the ceiling.

STURGES  
LONDON

39 Hill Street, London  
£3,857 Per calendar month





- Features include CCTV, Video Phone Entry, Digital TV and Lifts
- Close to numerous shops and restaurants
- Private communal gardens
- Located in Mayfair near the infamous Berkeley Square
- Walking distance to Green Park and Hyde Park
- Excellent location for underground stations including Green Park and Bond Street
- On site Building Manager



STURGES  
LONDON



## Hill Street, London

Set over 599 sqft, this one bedroom apartment comprises of a large double bedroom, a modern bathroom, spacious living area with rear facing views and a unique kitchenette plus access to a private gated communal garden.

The apartment is in one of London's most prestigious locations, Mayfair neighbouring the famous Berkeley Square.

This beautiful purpose built building benefits from spacious living accommodation, lift service, on-site building manager and is nestled conveniently between two of London's parks Hyde Park and Green Park.

London underground stations, Green Park, Bond Street and Marble Arch are all within a short stroll away.

**Local Authority:**

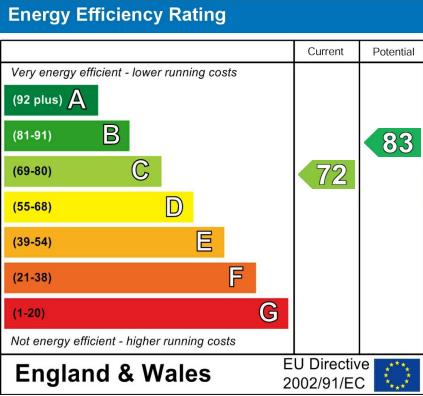
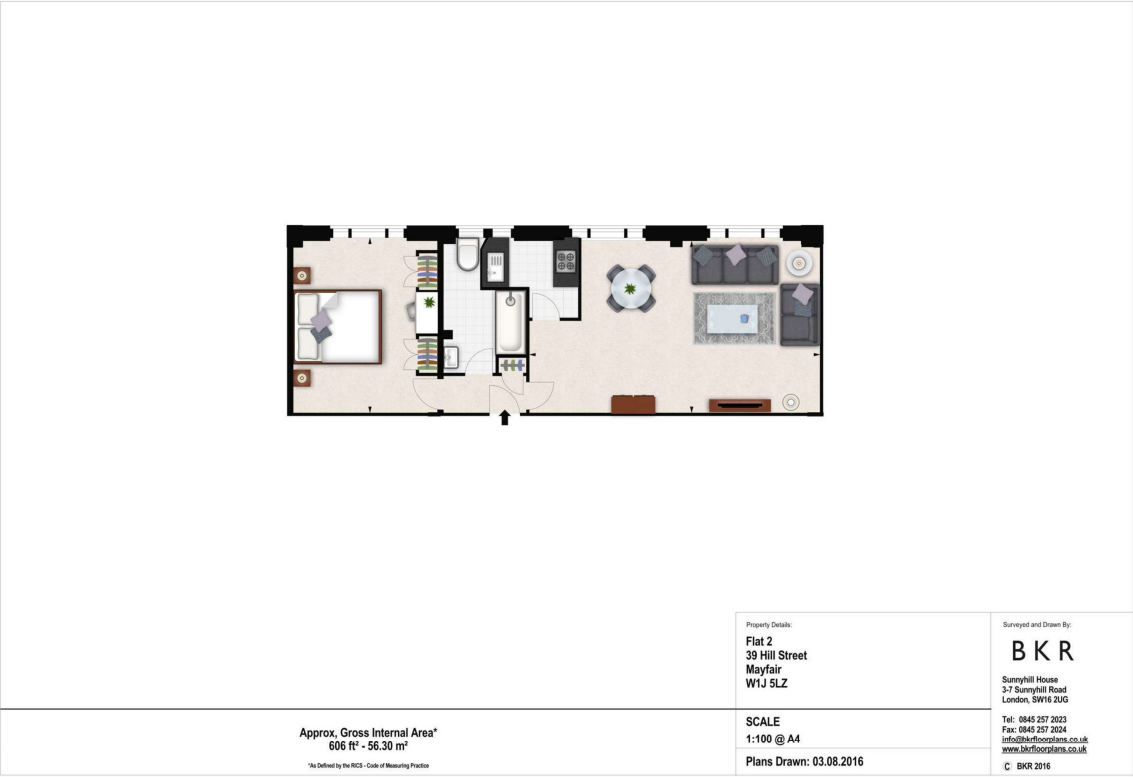
**Council Tax Band:** F

**Lease:** Add text here

**Service Charges:** Add text here

**Ground Rent:** Add text here

**STURGES**  
LONDON



For more information, please contact:

(Tel) 020 3393 2002  
(Email) [hello@sturgeslondon.co.uk](mailto:hello@sturgeslondon.co.uk)

668 Fulham Road, Parsons Green, London, SW6 5RX

[sturgeslondon.co.uk](http://sturgeslondon.co.uk)

Agents Note: Whilst every care has been taken to prepare these particulars, they are for guidance purposes only. All measurements are approximate and for general guidance purposes only and whilst every care has been taken to ensure accuracy, they should not be relied upon and potential buyers/tenants are advised to recheck the measurements.