



Murray Street

London, NW1

Offers in excess of £800,000

A fantastic opportunity to acquire a share freehold property in prime Camden. On the edge of Camden Square and in close proximity to Kings Cross. This spacious property (1371 sq. ft) needs some modernisation and has the potential to be a stunning home. It is being sold chain-free but it is currently rented out bringing in £62,310 per annum. Tenants vacate in July.



Murray Street

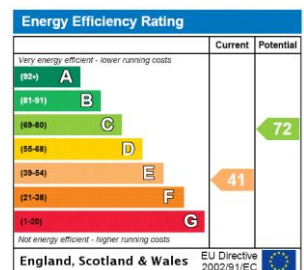
London, NW1

- Very spacious – 1371 square feet
- Chain-free
- Excellent location
- Share of freehold
- Own front door



Murray Street, situated in Camden Square conservation area, is a quiet location just off Camden Square. It lies in close proximity to both Kentish Town and Camden. Kings Cross is in close proximity and boasts a fantastic array of shops, cafes and transport links.

Tenure: Share of Freehold
Service Charge: TBC
Ground Rent: £0
Local Authority: Camden
Council Tax Band: E



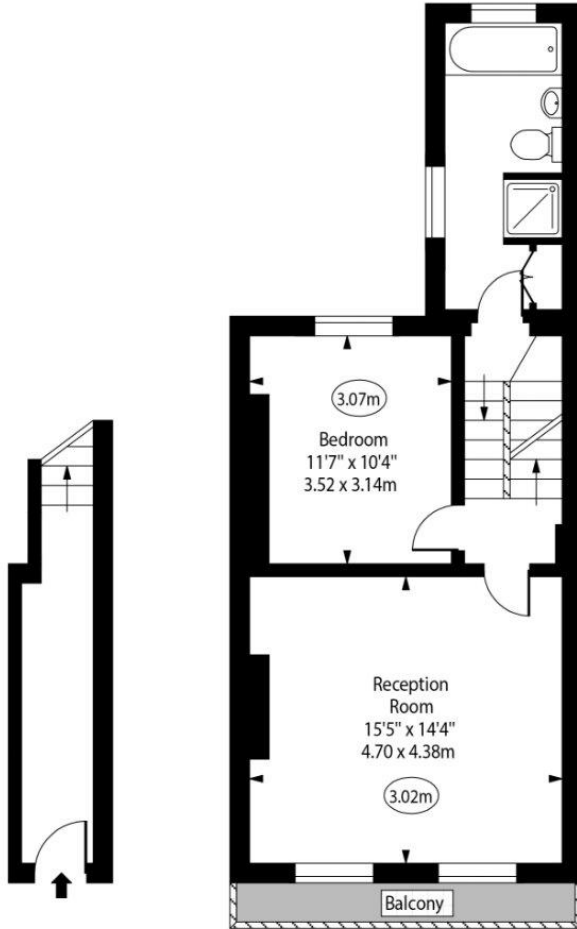
Chestertons Camden & Kentish Town Sales

99-101 Parkway
 Camden
 London
 NW1 7PP
 camden@chestertons.co.uk
 020 7267 2053
 chestertons.co.uk

Murray Street



○ - Ceiling Height

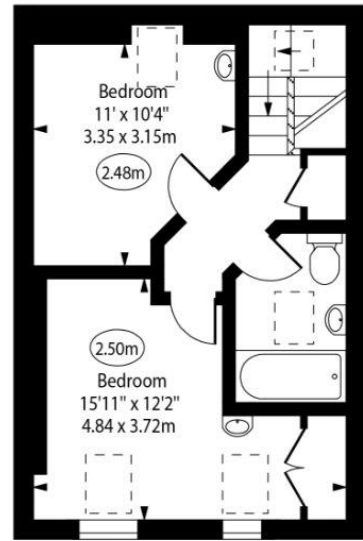


Ground Floor

Gross Internal Area - 70 Sq Ft - 6.50 Sq M

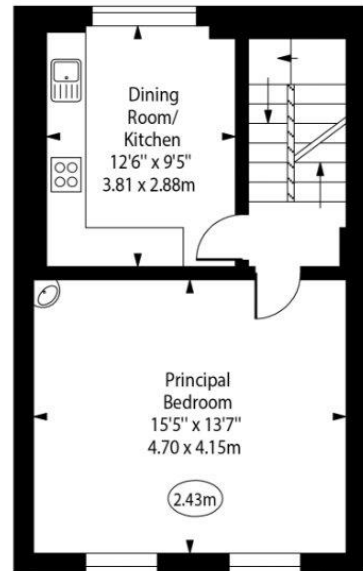
First Floor

Gross Internal Area - 512 Sq Ft - 47.56 Sq M



Third Floor

Gross Internal Area - 383 Sq Ft - 35.58 Sq M



Second Floor

Gross Internal Area - 406 Sq Ft - 37.72 Sq M

Approx Gross Internal Area 1371 Sq Ft - 127.36 Sq M

(Excluding Void)

For Illustration Purposes Only - Not To Scale

www.goldlens.co.uk

Ref. No. 017596R

