



## ELSHAM ROAD, W14

£950,000

Great Condition  
High Ceilings  
Period Building  
Raised Ground Floor  
Wonderful Location  
Open Plan Reception

@marshandparsons  
marshandparsons.co.uk

MARSH &  
PARSONS



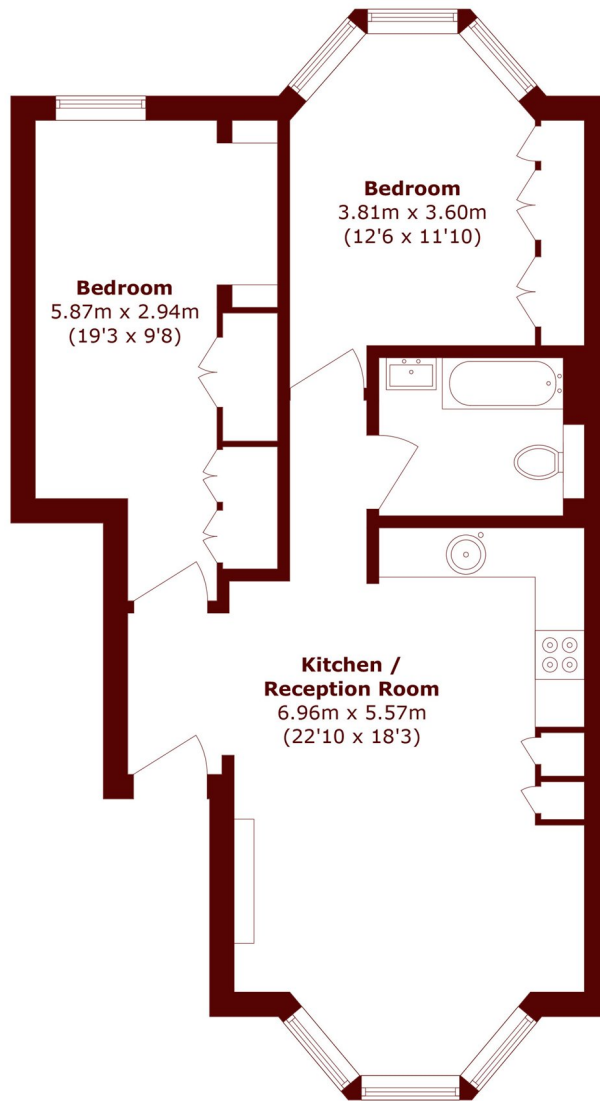
# ABOUT THE PROPERTY

A spacious and beautifully presented two bedroom apartment on the raised ground floor of a charming stucco fronted period building. Benefiting from high ceilings and large windows, the property is flooded with light and comprises a modern kitchen, a spacious reception room, two double bedrooms, excellent storage space and a contemporary bathroom.

Elsham Road is a short walk from London Westfield, Olympia Village and the shops, bars and eateries of Holland Park Avenue. Transport links include Kensington Olympia Overground Station, Shepherds Bush Central Line/Overground and Holland Park Central Line.



# STEP INSIDE ELSHAM ROAD



## Ground Floor

Total area (approx.): 65.5 sq. m (705.0 sq. ft)

**Holland Park**  
020 7605 6890

Energy Rating: C We aim to make our particulars both accurate and reliable. However, they are not guaranteed; nor do they form part of an offer or contract. If you require clarification on any points then please contact us, especially if you're traveling some distance to view. Please note that appliances and heating systems have not been tested and therefore no warranties can be given as to their good working order

**MARSH &  
PARSONS**